

# ACE-B7400

AMD eOntario All-in-One Gaming Board



## Features

- AMD Radeon HD 6310 Integrated Graphic Controller
- Supports DX11 & OpenGL 4.1
- 32 digital inputs and 32 digital outputs with Micro-Fit 3.0 connector
- 6 serial ports, 4 x RS-232, 2 x RS-232/485/ccTalk
- 2MB SRAM memory (max. 4MB)
- Timer & Meter pulse generator, counters
- Intrusion Logger



Invention Patent I334065

## Specification

### Specification

CPU	AMD Dual Core:T48N 1.4GHz
Chipset	AMD Fusion Control Hub A55E
Memory	2 x DDR3 SO-DIMM up to 8GB, 1GB pre-installed

### Video

Graphic Controller	Integrated Radeon HD 6310, support DX11, OpenGL 4.1
Video Memory	shared memory
Video Interface	1 x DVI-I (DVI or VGA) + 1 x DVI, Dual display supported

### Storage

SATA	2 x SATA 2.0 connector
CF	2 x Compact Flash Type II socket

### Communication

Ethernet	2 x Gbps LAN with RJ45
USB	8 x USB 2.0 (6 x external, 2 x internal)
Serial Port	• 4 x RS-232 with male DB9 • 2 x ccTalk/RS-485/RS-232 with Micro-Fit 3.0 7-pin connector

### Audio

Output	• 2.1 channel from Micro-Fit 3.0 connector • 5.1 channel from box header
Amplifier	• 2.1 channel (10W x 2 + 20W) • 5.1 channel un-amplified

### Gaming I/O

I/O Interface	Micro-Fit 3.0 connector
Digital Input	• 32 x external inputs (Features 4 counters, 5 intrusion loggers) • 8-bit DIP switch • Programmable debounce time • State Change interrupt
Digital Output	• 29 x 500 mA outputs (features 8 pulse generators) • 3 x 1000 mA outputs • Meter outputs support pulse generator
Readable DIP Switch	8-bit (Optional)
GPIO	16-bit TTL level GPIOs

### Gaming I/O

Timer	4 x 16-bit programmable timer
Battery backup SRAM	• 2 x 1MB bytes (optional 2 x 2MB bytes) • 2 x 500mAh re-chargeable battery
EEPROM	1KB
Event Logger	• 5 x external, 1 x internal, 1x chassis door intrusion inputs • 2 x SRAM battery low detections • Power and Reset event
Smart Card Reader	N/A
Secured Real Time Clock	Password protected
Software Security	• 1 x DS2404 on board iButton chip • 1 x external 1 wire interface for iButton • ProtectU 2.0: AES, HASH

### Other Feature

WatchDog Timer	1 to 255 seconds programmable
Indicator	HDD and Power LED
Expansion Slot	1 x Mini PCIe slot (Optional)
Reset	1 x system reset connector

### Power Requirement

Power Input	• 12V for system • 12V or 24V for ccTalk
Power Consumption	max. 36W

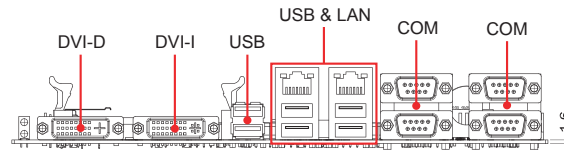
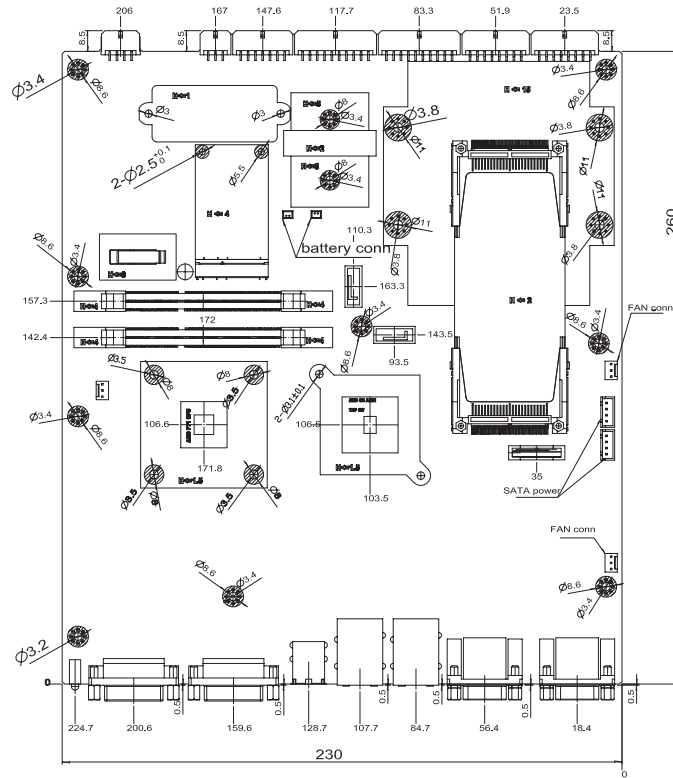
### Software

OS Support	Windows XP, Windows 7 (32/64 bit), Linux Fedora 14 (32 bit), Ubuntu 10.04 (32 bit)
Software Development Kit	• Device driver • Application Program Interface (API) • Demo program

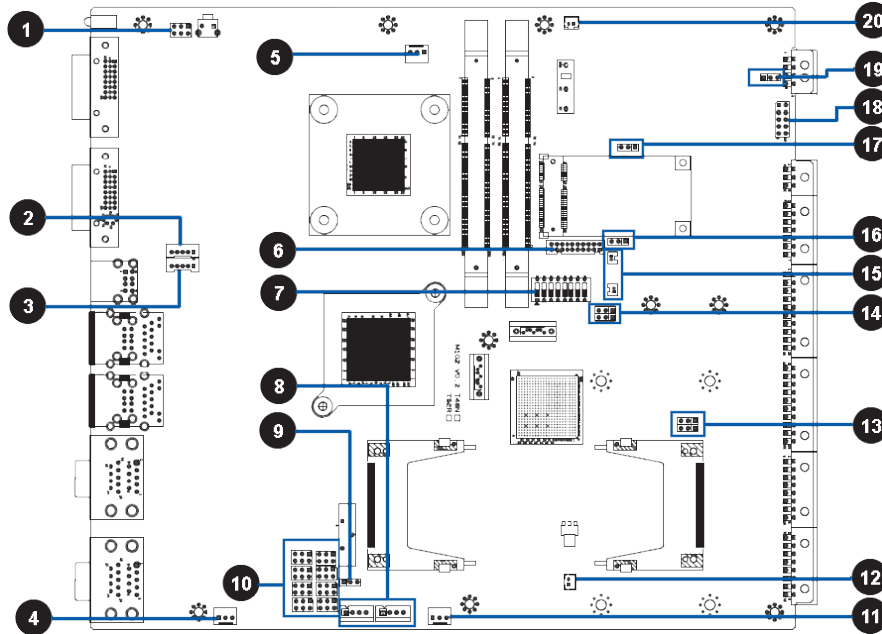
### Mechanical & Environment

Dimension	260 mm x 230 mm (10.236" x 9.055")
Operating Temp.	0~60°C (32~140°F)
Storage temp.	-20~80°C (-4~185°F)
Relative Humidity	0~90% @ 40°C, non-condensing
Safety	CE, FCC compliant

## Dimension



## I/O Connectors



01. System Power Button & Reset connector
02. USB 2.0 Connector
03. USB 2.0 connector
04. System FAN Connector 2.
05. APU FAN Connector.
06. JST 2.0mm Gaming Spare-IO Connector. (16-bits GPIO)
07. 8-bit DIP-Switch Input for AGC.
08. SATA Power Connectors.
09. Clear System CMOS Jumper.
10. CN3 Output Signal Selection Jumper (TTL, RS232, RS485 or ccTalk)
11. System FAN Connector 1.
12. External i-Button Connector.
13. SRAM A, B Clear Jumper.
14. Bill-enable, Coin-enable Preset Jumper.
15. Lithium Battery Connector for SRAM, AGA and secured RTC.
16. RS-485 Terminal Resistor Selection Jumper for CN3 (UART 6)
17. RS-485 Terminal Resistor Selection Jumper for CN3 (UART 5)
18. Internal 5.1 Channel Audio Pin-Header.
19. cctalk Supply Power Selection Jumper.
20. JST 2.0mm Chassis Open/Close Detection Connector.

## Packing List

- ACE-B7400 x 1
- Micro-Fit cable for digital input, COM, Audio, Power input x 1 set
- SATA power cable x 2
- DVI-I to VGA adaptor x 1
- Internal USB cable x 2

## Ordering Information

ACE-B7400T48

ACE-B7400 with AMD T48N 1.4GHz Dual Core processor