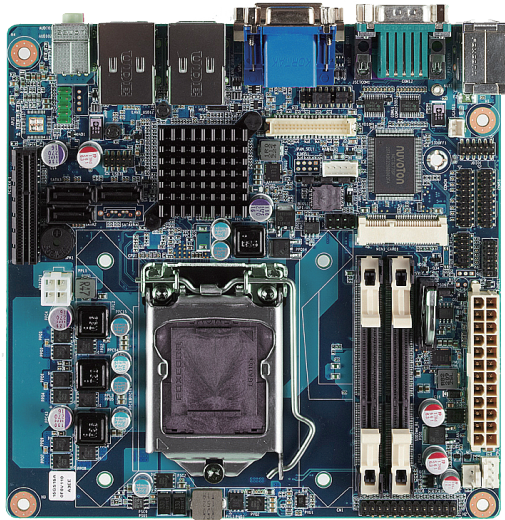


# AMB-IH61T1

Mini-ITX

Intel H61 with Core i7/ i5/ i3 Mini-ITX Motherboard, DDR3-1333, SATA II, USB 2.0, PCI-E x4, DVI-D, VGA, COM, GbE



## Features



- Intel LGA1155 Socket supports cross compatible with Intel Core i7/ i5/ i3 desktop processors
- Two 204-pin SO-DIMM sockets support DDR3 1333/ 1066 SDRAM up to 16GB
- 6 x COM, 8 x USB 2.0, 3 x SATA II, 8-bit GPIO, 1 x PCI-E x4, 1 x Mini PCIe

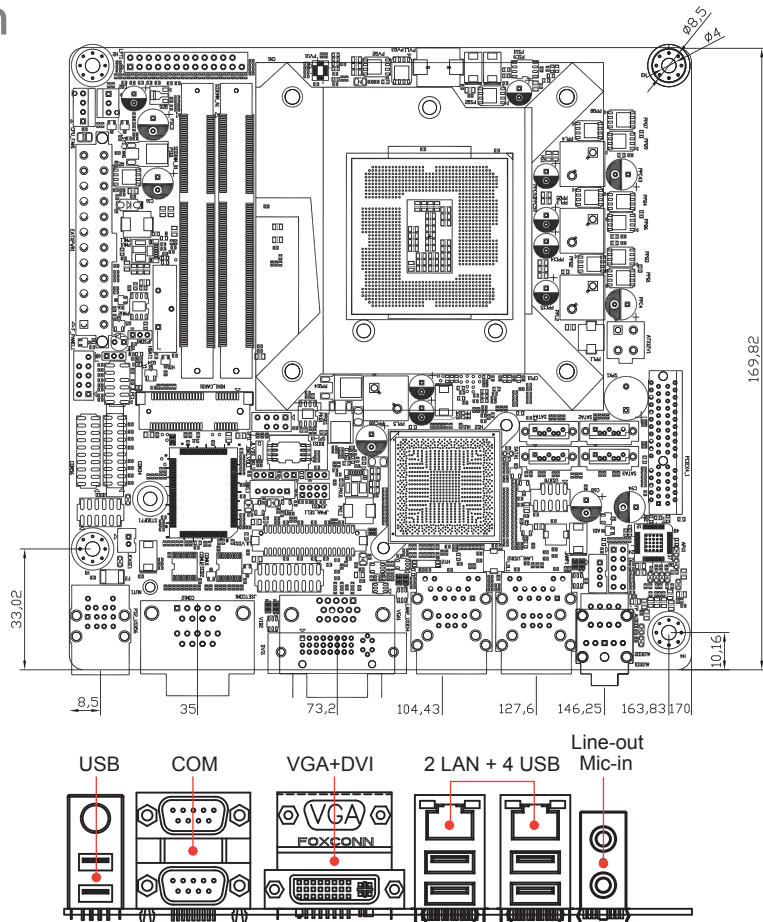


## Specification

Specification	
<b>CPU</b>	Intel LGA1155 Socket support up to 77W processors with Intel Core i7/i5/i3/Pentium/Celeron desktop Processors "CPU Top no higher than 77W"
<b>Chipset</b>	Intel H61 Express Chipset
<b>Memory</b>	Two 204-pin SO-DIMM support DDR3-1333/1066 SDRAM, Non-ECC up to 16GB
Video	
<b>Graphic Controller</b>	Integrated graphics support for processors with Intel Graphics Technology
<b>Video Memory</b>	Shared Memory
<b>Video Interface</b>	<ul style="list-style-type: none"> <li>● 1 x VGA (DB15)</li> <li>● 1 x DVI-D</li> <li>● 1 x LVDS</li> </ul>
Storage	
<b>SATA</b>	3 x SATA II ports
I/O	
<b>Ethernet Chip</b>	Realtek RTL8111E GbE
<b>Ethernet</b>	2 x GbE RJ45 with LED, Realtek RTL8111E
<b>Expansion Slot</b>	<ul style="list-style-type: none"> <li>● 1 x PCI-E x4 slot</li> <li>● 1 x Mini PCIe slot</li> </ul>
<b>Serial Port</b>	<ul style="list-style-type: none"> <li>● 1 x RS232 (DB9)</li> <li>● 1 x RS232/485 (DB9)</li> <li>● 4 x RS232 (Pin Header)</li> </ul>
<b>USB</b>	8 x USB 2.0 ( 1 x DB9 RS232, 6 x Rear, 2 x Pin Header)
<b>GPIO</b>	8-bit Digital I/O
<b>Parallel Port</b>	1 x Pin Header
<b>PS/2</b>	1 x PS/2 stacked on USB (KB)
<b>Audio</b>	Realtek ALC892 Audio Codec
Hardware Feature	
<b>Hardware Monitoring</b>	Monitoring temperature, voltage, and cooling fan status. Auto throttling control when CPU overheats.
<b>WatchDog Timer</b>	Software programmable 1~255 sec./mins.
Power Requirement	
<b>Power Input</b>	1 x 24-pin ATX Power Connector 1 x 4-pin ATX 12V Power Connector
<b>Power State</b>	S0, S1, S3, S4

Mechanical & Environment	
<b>Dimension</b>	170mm x 170mm (6.69" x 6.69" )
<b>Weight</b>	0.77 lbs (0.35kg)
<b>Operating Temp.</b>	0~60°C (32~140°F)
<b>Storage Temp.</b>	-20~80°C (-4~176°F)
<b>Relative Humidity</b>	0 to 90% , non-condensing
<b>Safety</b>	CE, FCC class A
Software	
<b>OS Support</b>	Windows XP, Vista, Win 7, Win 8, Linux
Packing List	
<ul style="list-style-type: none"> <li>● 1 x AMB-IH61T1</li> <li>● 1 x Driver CD</li> <li>● 1 x Quick Guide</li> <li>● 1 x IO Shield</li> <li>● 2 x SATA Cable</li> </ul>	
Ordering Information	
<b>AMB-IH61T1</b>	Intel H61 with Core i7/ i5/ i3 Mini-ITX Motherboard, DDR3-1333, SATA II, USB 2.0, PCIe x16, DVI-D, VGA, COM, GbE

## Dimension



## Jumper Setting

