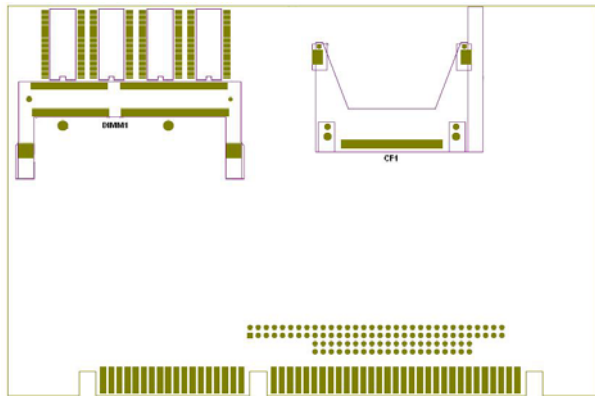
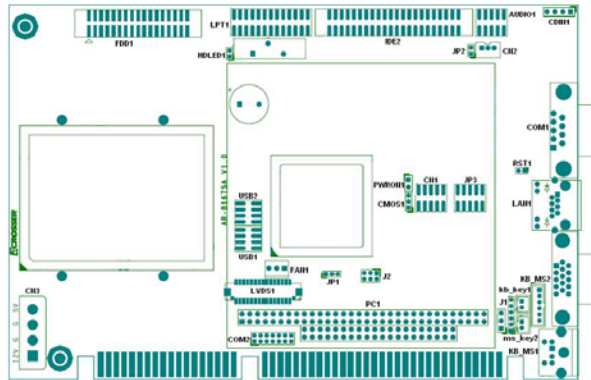


AR-B1675A MANUAL

Version 1.0

1. SETTING UP THE SYSTEM



1.1 PACKING LIST

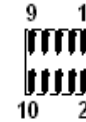
- The quick setup manual
- 1 AR-B1652 CPU board
- 1 Software utility CD
- 1 Serial port wired cable
- 1 Audio wired cable
- 1 PS/2 Mouse & Keyboard interface Y-cable
- 1 Hard disk drive adapter cable (44Pin)

- 2 USB port on one bracket cable
- 1 Parallel port cable
- 1 Floppy port cable

1.2 AUDIO CONNECTOR (AUDIO1)

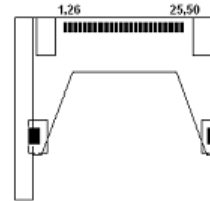
- AUDIO1 : Audio Pin Header

PIN	DESCRIPTION	PIN	DESCRIPTION
1	LINE OUT R	2	LINE OUT L
3	GND	4	GND
5	LINE IN R	6	LINE IN L
7	MIC IN	8	GND
9	GND	10	GND



1.3 COMPACT FLASH CONNECTOR (CF1)

- CF1 : Compact Flash Storage Card Socket pin assignment



PIN	DESCRIPTION	PIN	DESCRIPTION
1	GROUND	26	CARD DETECT1
2	D3	27	D11
3	D4	28	D12
4	D5	29	D13
5	D6	30	D14
6	D7	31	D15
7	CS1#	32	CS3#
8	N/C	33	N/C
9	GROUND	34	IOR#
10	N/C	35	IOW#
11	N/C	36	PULL HIGH
12	N/C	37	IRG15
13	VCC	38	VCC
14	N/C	39	MASTER/SLAVE
15	N/C	40	N/C
16	N/C	41	RESET#
17	N/C	42	IORDY
18	A2	43	N/C
19	A1	44	PULL HIGH
20	A0	45	ACTIVE#
21	D0	46	PDIAG#
22	D1	47	D8
23	D2	48	D9
24	N/C	49	D10
25	CARD DETECT2	50	GROUND

1.4 CLEAR CMOS (CMOS1)

- CMOS1 : CMOS pin header

CMOS1	DESCRIPTION
1-2	Normal Operation
2-3	Reset CMOS



1.5 GPIO PORT (CN1)

- CN1 : 4 BIT Input/Output GPIO Connector

PIN	DESCRIPTION	PIN	DESCRIPTION
1	GND	2	+5V
3	DIO10	4	DIO00
5	DIO11	6	DIO01
7	DIO12	8	DIO02
9	DIO13	10	DIO03



1.6 POWER ON (CN2)

- CN2 : Power ON Pin Header

Pin	DESCRIPTION
1	5VSB
2	GND
3	PS_ON



1.7 POWER CONNECTOR

- CN3 : Power Connector

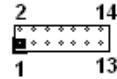
PIN	DESCRIPTION
1	12V
2	GND
3	GND
4	5V



1.8 COM2

- COM2: RS-232 with RS-422/485 Serial port(Pin Header)

PIN	DESCRIPTION	PIN	DESCRIPTION
1	NDCD	2	NDSR
3	NSIN	4	NRTS
5	NRIB	6	NCTS
7	NSOUT	8	NRI
9	GND	10	GND
11	TX+	12	TX-
13	RX+	14	RX-



1.9 SDRAM SOCKET 144 PIN (DIMM1)

- DIMM1



1.10 CPU FAN POWER CONNECTOR (FAN1)

- FAN1: Fan Connector for CPU

PIN NO.	DESCRIPTION
1	FANSP1
2	+5V
3	GNDI



1.11 LED (HDLED1)

- HDLED1 : HardDisk LED Connector

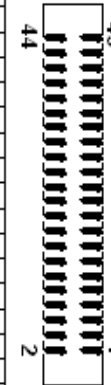
Pin	DESCRIPTION
1	+5V
2	HD_LED



1.12 IDE DRIVE CONNECTOR (IDE2)

- IDE 2 : Secondary IDE Connector (44 Pins)

PIN	DESCRIPTION	PIN	DESCRIPTION
1	RESET#	2	GROUND
3	DATA 7	4	DATA 8
5	DATA 6	6	DATA 9
7	DATA 5	8	DATA 10
9	DATA 4	10	DATA 11
11	DATA 3	12	DATA 12
13	DATA 2	14	DATA 13
15	DATA 1	16	DATA 14
17	DATA 0	18	DATA 15
19	GROUND	20	N/C
21	N/C	22	GROUND
23	IOVW#	24	GROUND
25	IOR#	26	GROUND
27	N/C	28	BALE
29	N/C	30	GROUND
31	INTERRUPT	32	IOCS16#
33	SA1	34	N/C
35	SA0	36	SA2
37	HDC CS0#	38	HDC CS1#
39	HDD ACTIVE#	40	GROUND
41	+5V LOGIC	42	+5V MOTOR
43	GROUND	44	TYPE



1.13 INVERTER CONNECTOR (J1)

- J1 : Inverter Power Connector

PIN NO.	DESCRIPTION
1	+12V
2	+12V
3	GND
4	BKLTEN
5	GND
6	BKLTCTL



1.14 RS232/RS422/RS485 SELECT (J2)

- J2 : Select COM2 is RS232 or RS422/485

J2	DESCRIPTION
1-2	RS232
3-4	RS422
5-6	RS485



1.15 LCD VOLTAGE SELECT (JP1)

- JP1: Select LCD Voltage

JP1	DESCRIPTION
1-2	+3.3V
2-3	+5V



1.16 CF MASTER SELECT (JP2)

- JP2 : Select CF Master or Slave mode

JP2	DESCRIPTION
Short	Master
Open	Slave



1.17 COM RI VOLTAGE SELECT (JP3)

- JP3 : COM1/2 Select RI is 12V/5V or signal

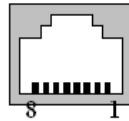
PIN	DESCRIPTION	PIN	DESCRIPTION
1	12V	2	12V
3	COM_R11	4	COM_R12
5	5V	6	5V
7	COM_R11	8	COM_R12
9	NR11	10	NR12



1.18 ETHERNET RJ-45 CONNECTOR (LAN1)

- LAN1 : LAN RJ45 Connector

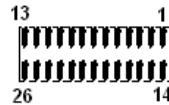
PIN NO.	DESCRIPTION	PIN NO.	DESCRIPTION
1	TX+	5	N/C
2	TX-	6	RX-
3	RX+	7	N/C
4	N/C	8	N/C



1.19 PARALLEL PORT (LPT1)

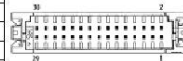
- LPT1: Parallel Port Connector

PIN	DESCRIPTION	PIN	DESCRIPTION
1	STB-	14	AFD-
2	PDO	15	ERR-
3	PD1	16	INIT-
4	PD2	17	SLIN-
5	PD3	18	GND
6	PD4	19	GND
7	PD5	20	GND
8	PD6	21	GND
9	PD7	22	GND
10	ACK-	23	GND
11	BUSY	24	GND
12	PE	25	GND
13	SLCT	26	X



1.20 LVDS Panel Connector (LVDS1)

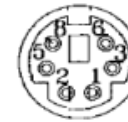
PIN	DESCRIPTION	PIN	DESCRIPTION
1	LCDVDD	2	GND
3	TRXEC-	4	TRXEC+
5	GND	6	TRXE2-
7	TRXE2+	8	GND
9	TRXE1-	10	TRXE1+
11	NC	12	NC
13	TRXE0+	14	TRXE0-
15	GND	16	TRXOC+
17	TRXOC-	18	GND
19	TRXO2+	20	TRXO2-
21	NC	22	TRXO1+
23	TRXO1-	24	NC
25	TRXO0+	26	TRXO0-
27	NC	28	NC
29	LCDVDD	30	LCDVDD



1.21 KEYBOARD & MOUSE CONNECTOR (MS_KB1)

- MS_KB1 : Keyboard Mouse PS2 Port

PIN	DESCRIPTION	PIN	DESCRIPTION
1	KB_DAT	2	MS_DAT
3	GND	4	+5V
5	KB_CLK	6	MS_CLK
7	GND	8	GND



1.22 POWER BUTTON (PWRON1)

- PWRON1 : Power Button Connector

Pin	DESCRIPTION
Open	Showdown
Short	Power ON



1.23 RESET BUTTON (RST1)

- RST1 : Reset Button Connector

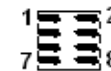
Pin	DESCRIPTION
Open	Normal
Short	Reset System



1.24 USB CONNECTOR (USB1/2/3/4)

- USB1/2/3/4: USB Connector(Pin header)

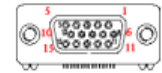
PIN	DESCRIPTION	PIN	DESCRIPTION
1	VCC	2	GND
3	USB-	4	USB+
5	USB+	6	USB-
7	GND	8	VCC



1.25 VGA CRT CONNECTOR (VGA1)

- VGA1 : 15-pin D-Sub Connector

PIN	DESCRIPTION	PIN	DESCRIPTION
1	L_RED	2	L_GREEN
3	L_BLUE	4	MON2PU
5	GND	6	GND
7	GND	8	GND
9	+5V	10	GND
11	MONOPU	12	5VDDCA
13	HSYNC	14	VSYNC
15	5VDDCCL		



1.26 SERIAL PORT (COM1)

- COM1 : RS-232 Serial port

PIN	DESCRIPTION	PIN	DESCRIPTION
1	NDCCD	2	NRX
3	NTX	4	NDTR
5	GND	6	NDSR
7	NRTS	8	NCTS
9	NR1A_12V	10	NC



1.27 MOUSE LOCK (MS_KEY1)

- MS_KEY1 : Mouse Lock Connector

Pin	DESCRIPTION
Open	Lock
Short	Normal



1.28 KEYBOARD LOCK (MS_KEY1)

- KB_KEY1 : Keyboard Lock Connector

Pin	DESCRIPTION
Open	Lock
Short	Normal

2 1

1.29 KEYBOARD & MOUSE CONNECTOR (KB_MS2)

- KB_MS2 : Keyboard & Mouse Connector

PIN NO.	DESCRIPTION
1	MS_DATA
2	KB_DATA
3	GND
4	KBVCC
5	MS_CLK
6	KB_CLK



1.30 FLOPPY DRIVE CONNECTOR (FDD1)

