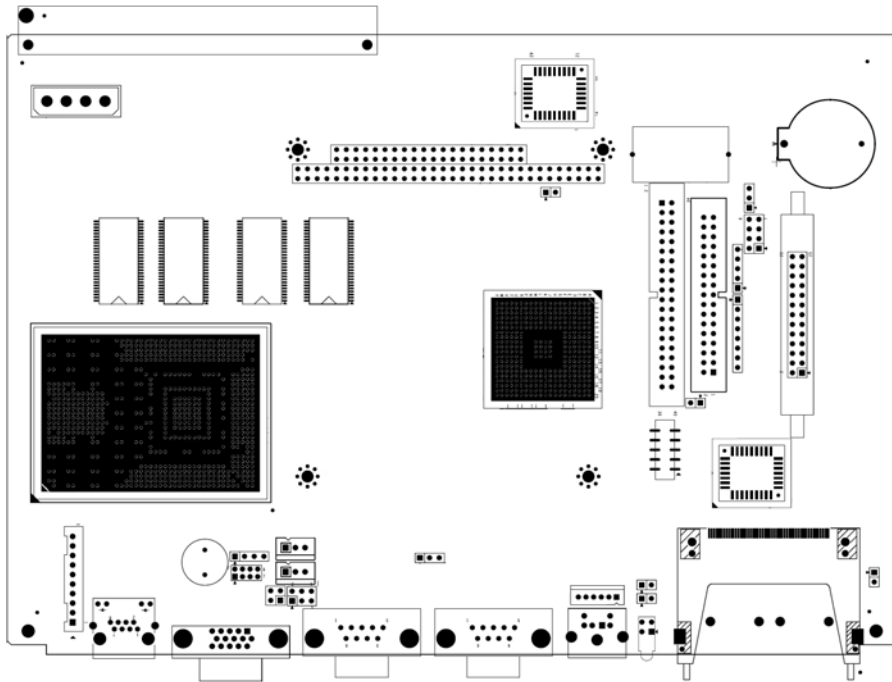


AR-B9675 Quick Manual V1.0

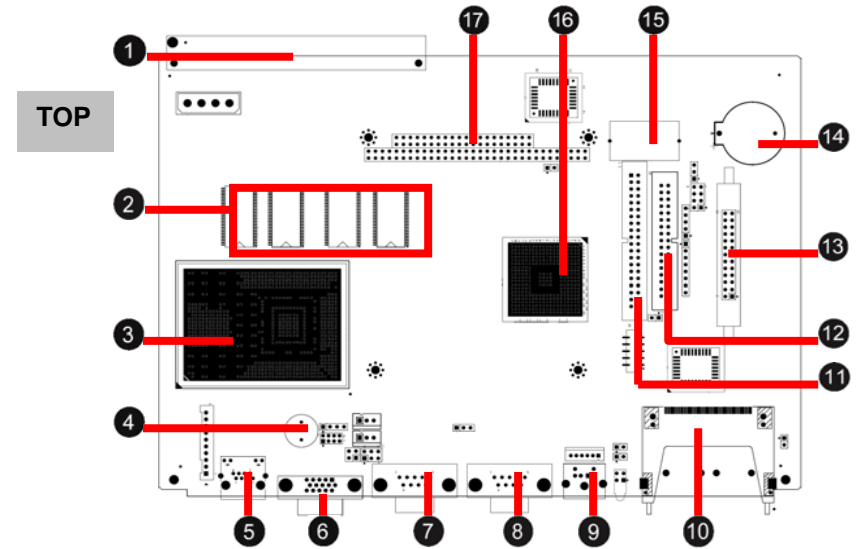


Content:

1. Locations of Main Component, Connectors, Jumpers and Indicators.
2. Description of Jumper Settings and Connector Pin Definitions.

1. Locations

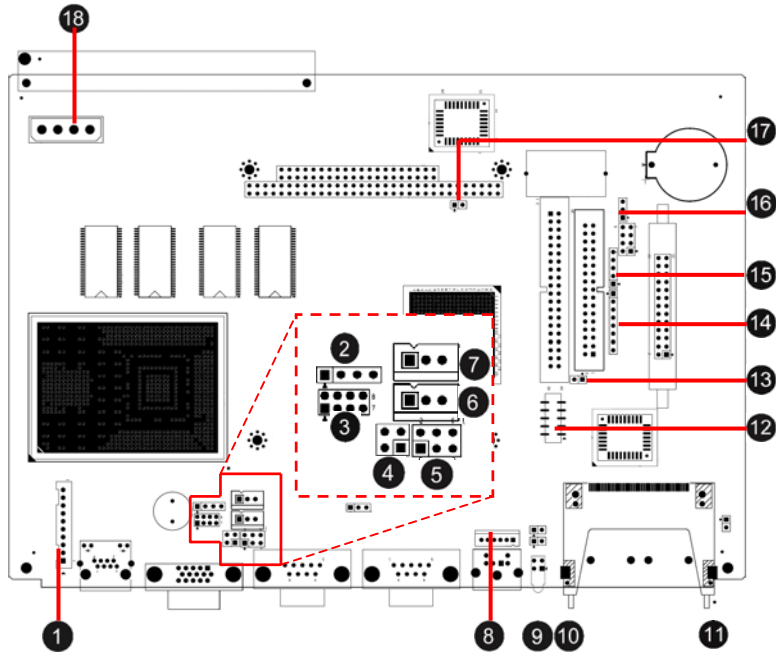
● Main Chips and Standard Connectors



1	CN1 ISA96 Connector	8	COM1 RS232
2	SDRAM 133MHz 128MB SDRAM	9	PS/2 connector PS/2 Keyboard and Mouse.
3	CPU VIA MARK800 CPU	10	CF Slot For CF card.
4	Buzzer Intel 915GME	11	IDE IDE connector for 3.5" hard disk.
5	LAN 100/10 Ethernet.	12	Floppy Connector for Floppy
6	VGA VGA connector for CRT.	13	Parallel Port Connector for Parallel Port.
7	COM2 RS232	14	RTC Battery Battery for RTC Logic.
15	SRAM Battery Battery for SRAM Power	16	South Bridge VIA 686B South Bridge.
17	PC104 Connector for PC104		



● **Connector, Jumper and Indicators**



1 LAN Connect to Another LAN device.	10 RST1 Pin header for Reset button.
2 ESPK1 Speaker connector	11 JP6 Jumper for setting CF card to Mater or Slave
3 GPIO1 Connector for general purpose input/output	12 USB1 Connector for 2 port USB 1.1
4 JP3 Jumper for Switching Rx for RS232 or RS485	13 JP5 Jumper for switching DMA33 or 66
5 JP4 Switch COM1 to RS232 or RS485	14 JP7 Connector for Programming CPLD.
6 FAN1 CPU FAN	15 IR1 Connector for IR interface.
7 FAN2 System FAN	16 JP2 Jumper for RTC Reset.
8 PS2 JST pin header for PS/2 KBMS.	17 PWR1 Extra Power for ISA -5V and -12V
9 JP8 Jumper for Setting GPIO Offset.	18 PWR2 Power for System.

1. Jumper settings and Pin Definitions.

1 **LAN**
Connect to Another LAN device and state LED

PIN	SIGNAL
1	TX+
2	TX-
3	RX+
4	RX1
5	NC
6	NC
7	NC
8	NC
9	NC
10	NC

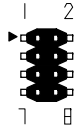
Light	SIGNAL
GREEN	LINK
Yellow	ACT

2 **ESPK1**
Speaker connector

PIN	SIGNAL
1	3.3V
2	TDO
3	TDI
4	NC
5	NC
6	TMS
7	GND
8	CLK

3 GPIO

Connector for general purpose input/output



PIN	SIGNAL	PIN	SIGNAL
1	GPI0	2	GPO0
3	GPI1	4	GPO1
5	GPI2	6	GPO2
7	GPI3	8	GPO3

4 JP3

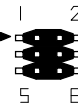
Jumper for Switching Rx for RS232 ort RS485



Status	Setting
1-2 close	RS232
3-4 close	RS485

5 JP4

Switch COM1 to RS232 or RS485



Status	Setting
1-3 close	For RS232
2-4 close	
3-5 close	For RS485
4-6 close	

6 FAN1

CPU FAN



PIN	SIGNAL
1	speed signal
2	+12V
3	GND

7 FAN2

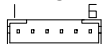
System FAN



PIN	SIGNAL
1	speed signal
2	+12V
3	GND

8 PS2

JST pin header for PS/2 KBMS.



PIN	SIGNAL
1	MSDAT
2	KBDAT
3	+5V
4	GND
5	MSCK
6	KBCK

9 JP8

Jumper for Setting GPIO Offset



PIN	OFFSET
SHORT	215H
OPEN	77H

10 RST1

Pin header for Reset button.



Status	Setting
short then release	Reset System
Open	Reset disable

11 JP6

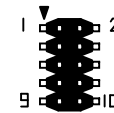
Jumper for setting CF card to Mater or Slave



Status	Setting
Close	Master
Open	Slave

12 USB1

Connector for 2 port USB 1.1



PIN	SIGNAL	PIN	SIGNAL
1	5V	2	5V
3	-USB0	4	-USB1
5	+USB0	6	+USB1
7	GND	8	GND
9	GND	10	GND

13 JP5

Jumper for switching DMA33 or 66



Status	Setting
Close	DMA66
Open	DMA33

14 JP7

Connector for Programming CPLD.



PIN	SIGNAL
1	3.3V
2	TDO
3	TDI
4	NC
5	NC
6	TMS
7	GND
8	CLK

15 IR1

Connector for IR interface.



PIN	SIGNAL
1	+5V
2	NC
3	RX
4	GND
5	TX

16 JP2

Jumper for RTC Reset.



Status	Setting
1-2 close	clear CMOS
2-3 close	normal

17 PWR1

Extra Power for ISA -5V and -12V



PIN	SIGNAL
1	-12V
2	-5V

18 PWR2

Power for system



PIN	SIGNAL
1	+12V
2	GND
3	GND
4	+5V