

AR-ES5230FL Installation Guide

| Revision | Description | Date |
|----------|---|------------|
| 1.0 | Release | 2007/10/19 |
| 1.1 | Add mounting bracket dimension (page 4) | 2007/12/18 |
| 1.2 | Add Thermal Pad use for RAM (page 10) | 2007/06/12 |
| 1.21 | Add Install SATA HDD (page 6/7) | 2007/06/12 |
| 1.3 | Change new system dimension | 2008/06/15 |

Contents

| | | |
|----------|--|----------|
| 1 | Introduction to AR-ES5230FL..... | 3 |
| | 1-1 Description..... | 3 |
| | 1-2 Packing List..... | 3 |
| | 1-3 Main system..... | 4-5 |
| 2 | Procedure of Assembly/Disassembly..... | 6 |
| | 2-1 Installing the 2.5”Hard Disk Drive(HDD)..... | 6-9 |
| | 2-2 Installing CF card..... | 10 |
| | 2-3 Installing SO-DIMM..... | 11-12 |

1. Introduction to AR-ES5230FL

AR-ES5230FL is a system product mainly for ticket control, navigation, advertising, fleet managements applications. With fanless & dust-proof design, AR-ES5230FL can satisfy the user requirements in any application environment. AR-ES5230FL has diverse physical interface in the front panel, such as pluggable CF card, KB/MS connector, 2 USB Ports, 2 10/100 LAN ports, VGA port, 4 console ports, LVDS port, DVI port, Audio output, External Switch Jack, Power Switch, Input Power connector. In addition, the system provides the capacity for extending I/O device by adding DRAM, CF card depending on users needs.

1.1 Discrimination (included Rubber Foot)

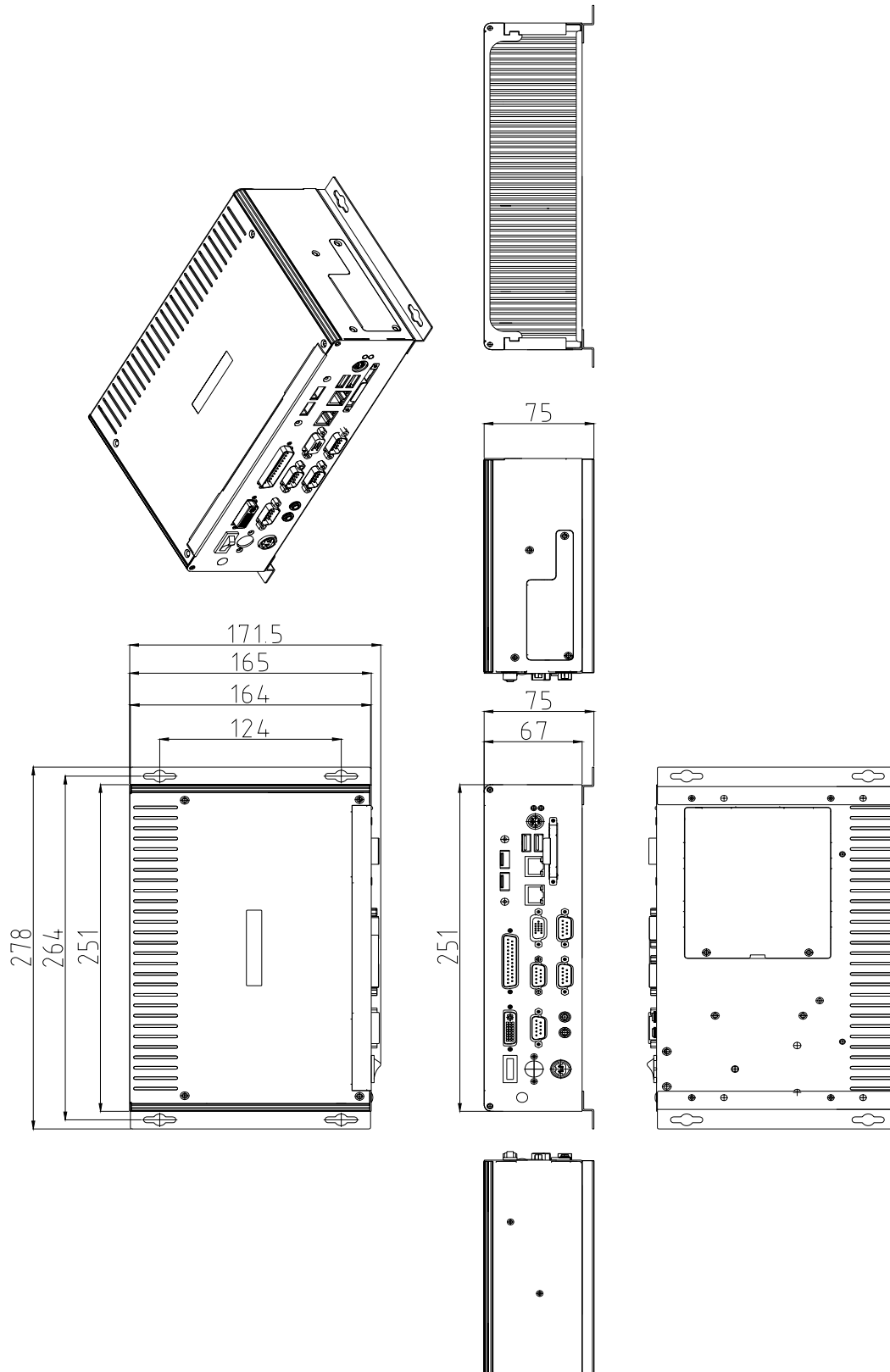
| Description | AR-ES5230FL |
|-------------|-----------------|
| CPU Board | AR-B5230 series |
| Dimensions | 251×165×67 (mm) |

1.2 Packing List

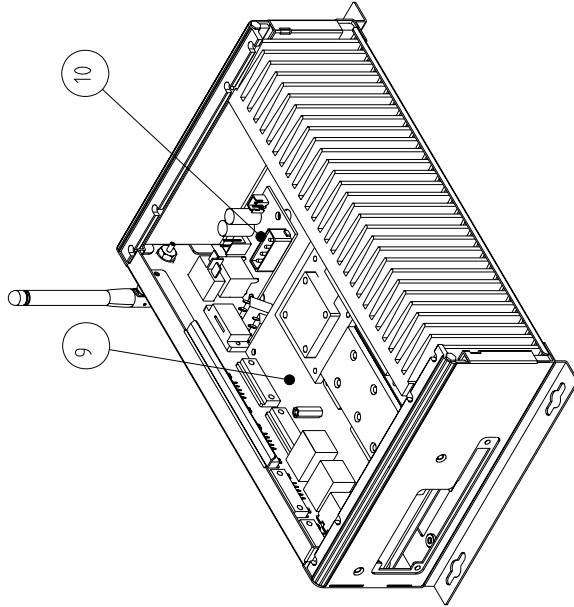
| Description | Q'ty |
|---------------------------|------|
| AR-ES5230FL | 1 |
| Power Cord | 1 |
| HDD Cable | 1 |
| KB/MS Cable | 1 |
| Mounting bracket | 2 |
| Mounting bracket Screw | 4 |
| CD | 1 |
| Quick Guide (AR-B5230) | 1 |

1.3 Main system

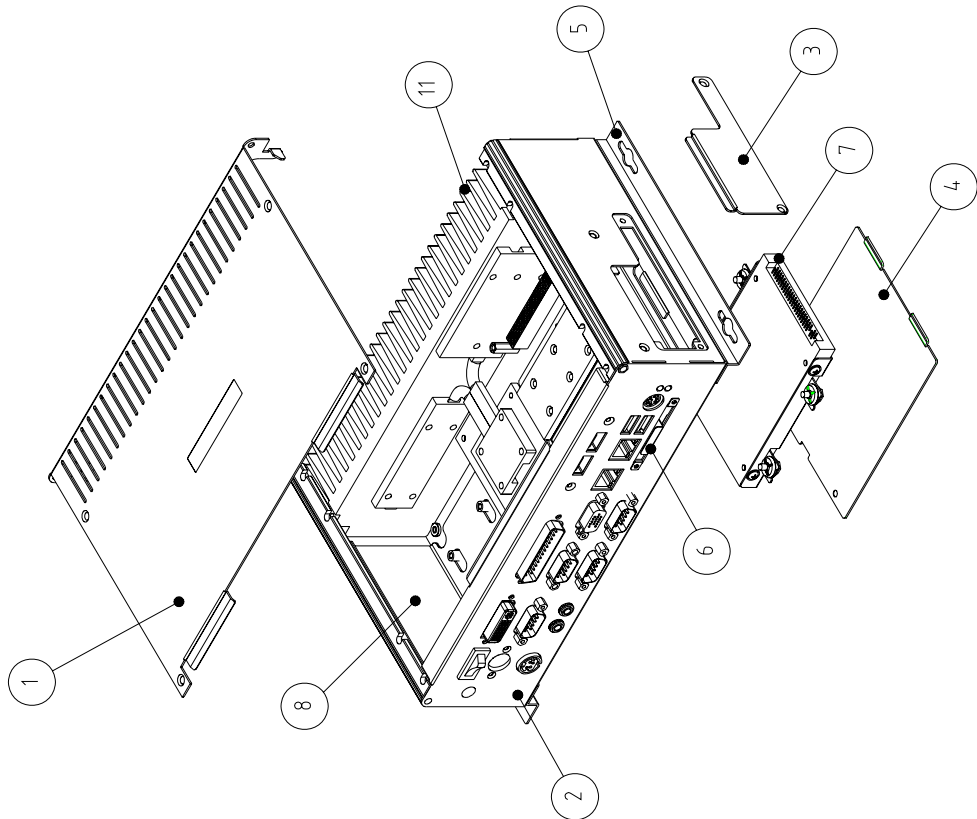
(1) Dimension



(2) System Configure



| Item | Part No. | Description | Q'ty | Remark |
|------|---------------|------------------|------|--------|
| 11 | 17004-0055-G1 | HEAT_SINK | 1 | |
| 10 | 010080554 | AR-B9427_V1.0 | 1 | |
| 9 | 010080553 | AR-B5230_V1.0 | 1 | |
| 8 | 170010695-G | PCB_BRACKET | 1 | |
| 7 | 170010585-G | HDD_BRACKET | 1 | |
| 6 | 170010698-G | CF_BRACKET | 1 | |
| 5 | 170010701-G | MOUNTING_BRACKET | 2 | |
| 4 | 170010696-G | BACE_BRACKET | 1 | |
| 3 | 170010697-G | SIDE-BRACKET | 1 | |
| 2 | 170010861-G | BOTTOM-CASE | 1 | |
| 1 | 170010699-G | TOP-CASE | 1 | |

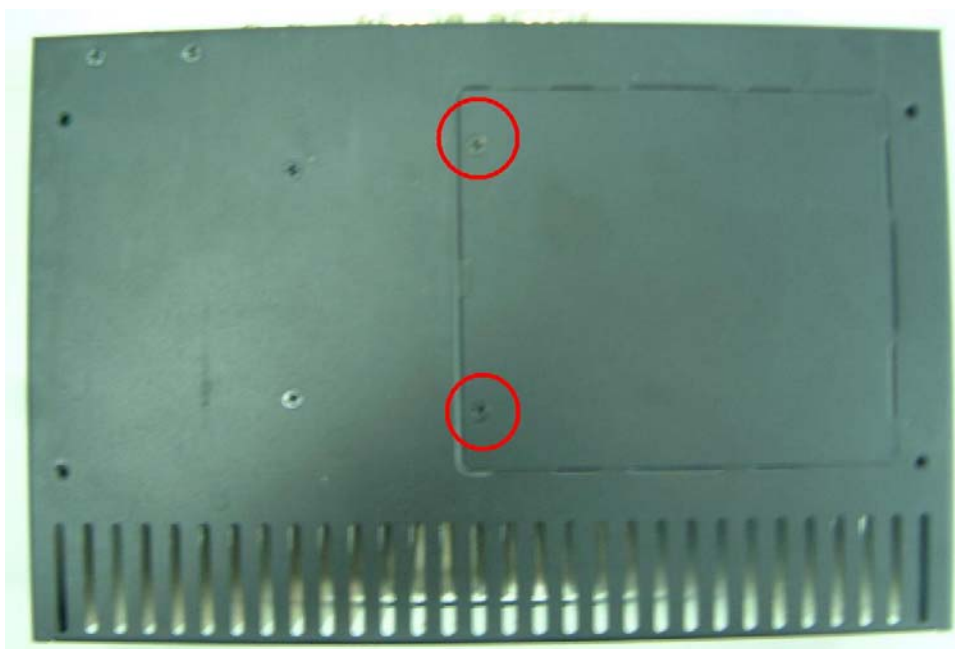


2. Procedure of Assembly/Disassembly

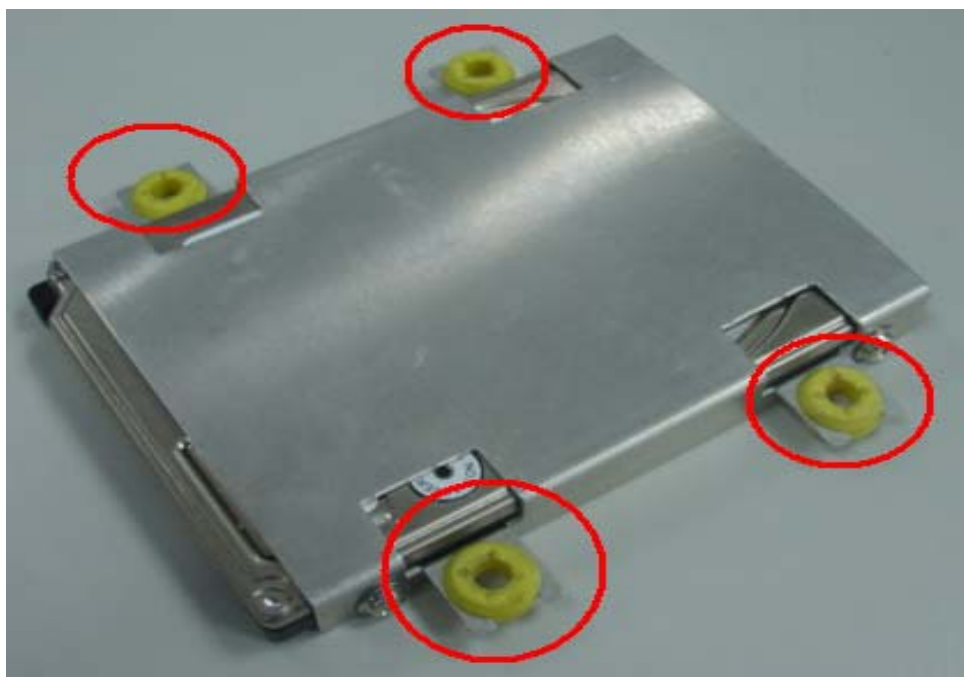
2-1 Installing the 2.5" Hard Disk Drive (HDD)

The following are step-by-step for installing the 2.5"HDD device

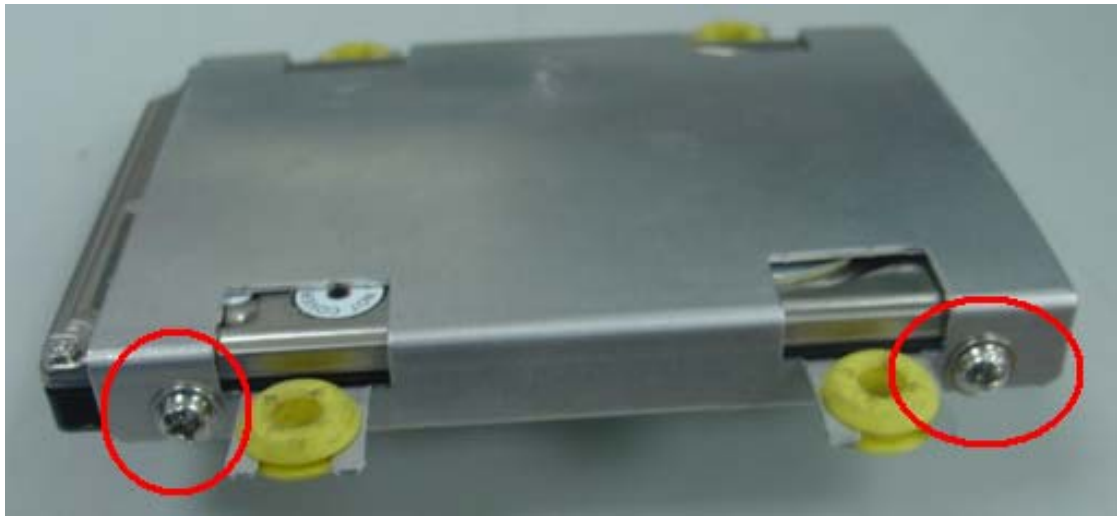
1. Remove bottom door screws (2pcs) from the bottom case in system



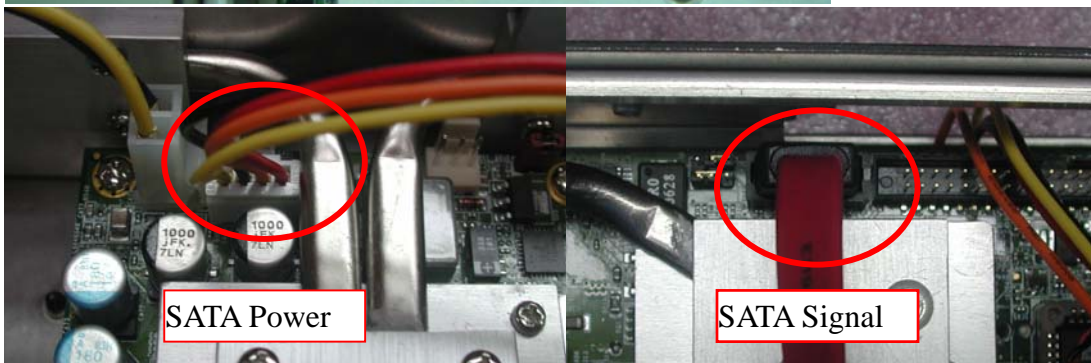
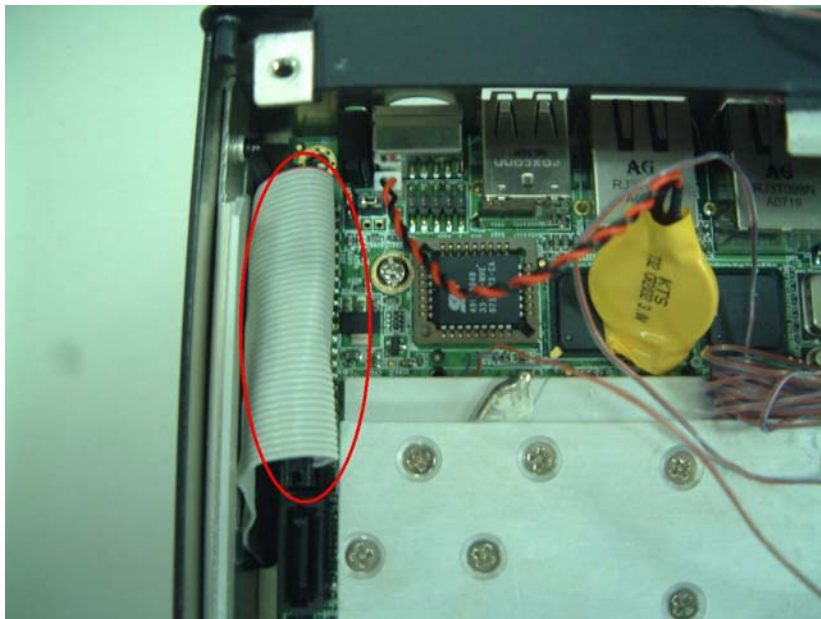
Insert the rubbers into the HDD bracket for each edge



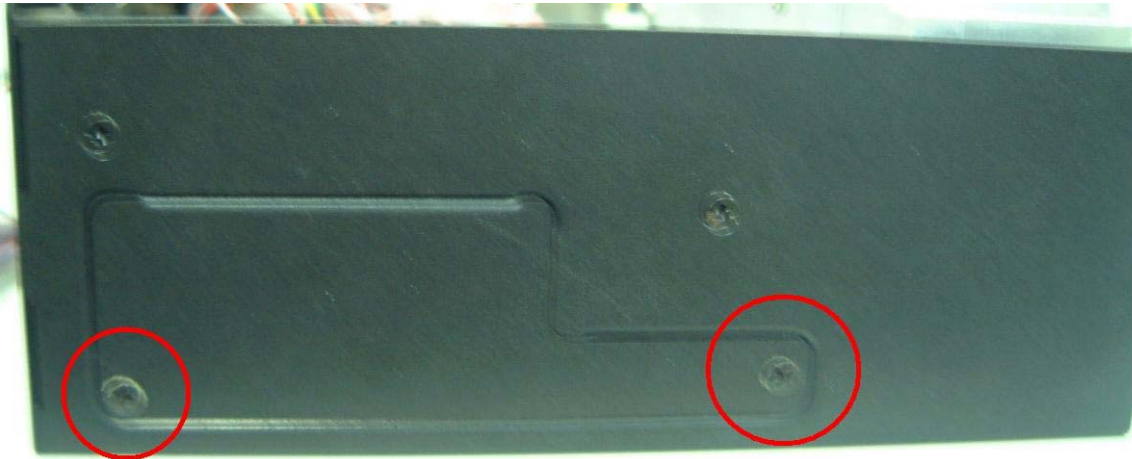
2. Lock HDD and Bracket together via screws (4pcs)



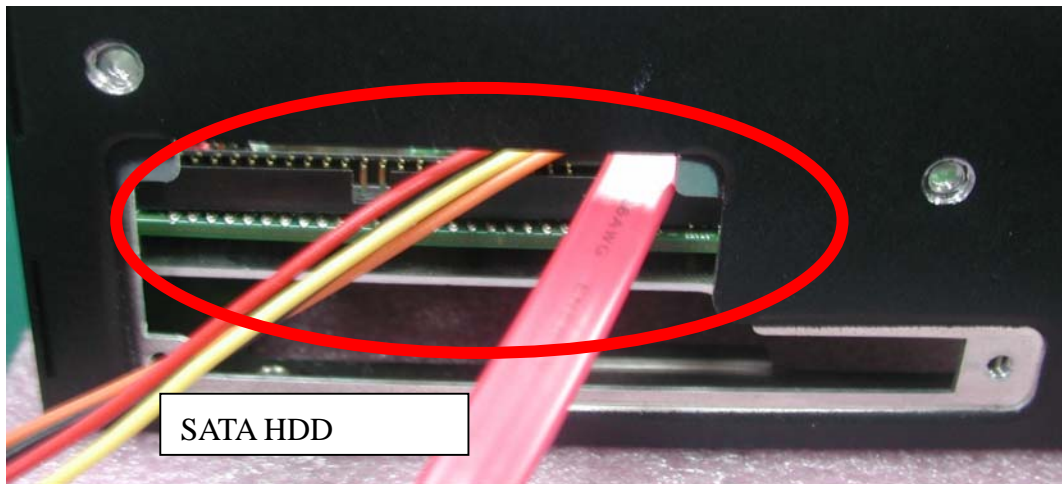
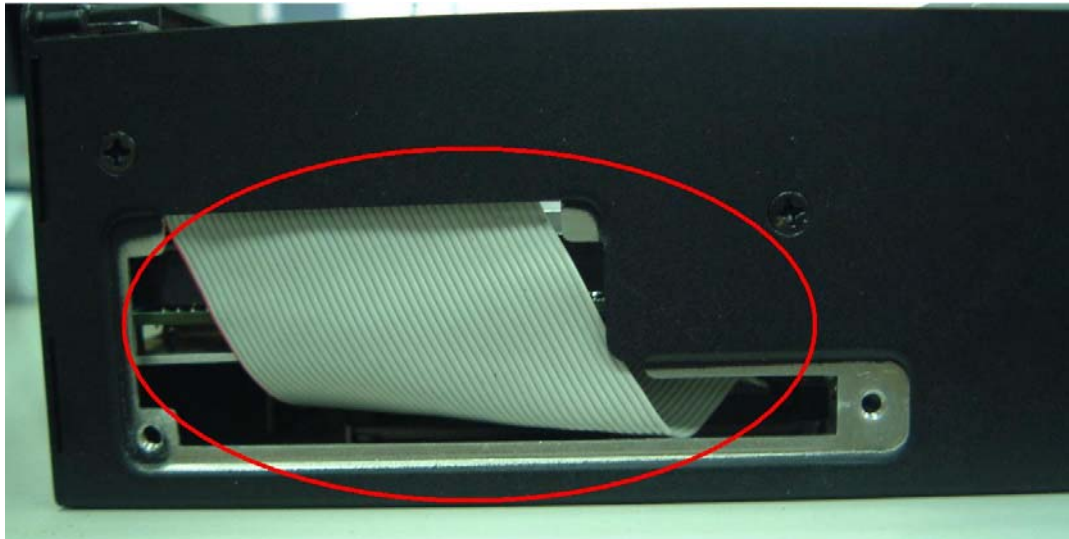
3. Plug the HDD cable into the 44-pin header connectors of the main board (or SATA HDD Installation)



4. Remove right side door screws (2pcs) from the bottom case in system

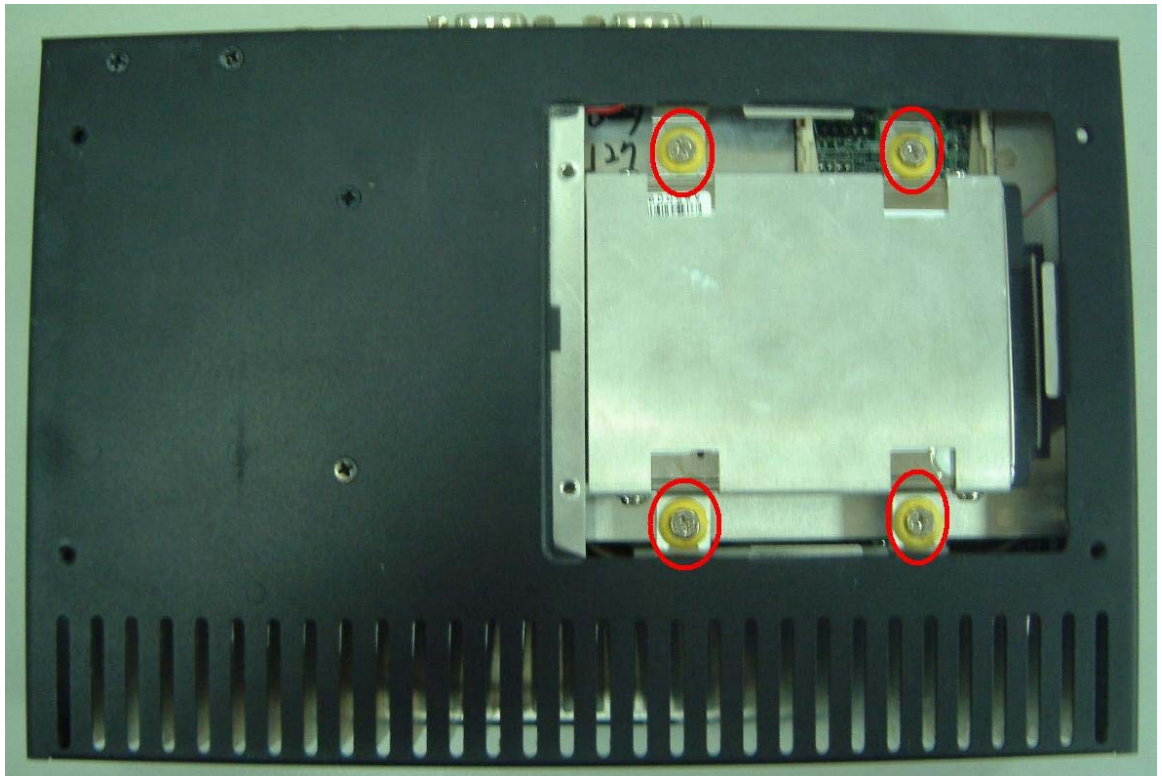


5. Route the HDD cable (for IDE HDD or SATA HDD) through the main board



6. Lock the right side door screws (2pcs) to the bottom case

Lock the HDD bracket to the top case by four screws



7. Insert the HDD cable into the HDD module

8. Lock the door screws to the bottom case in system

2-2 Installing CF card

The following are step-by-step for installing the CF card

1. Remove screws (2pcs) out from the CF card bracket
2. Install CF card and tight-up to the bracket



3. Insert the CF card to CF card expansion slot

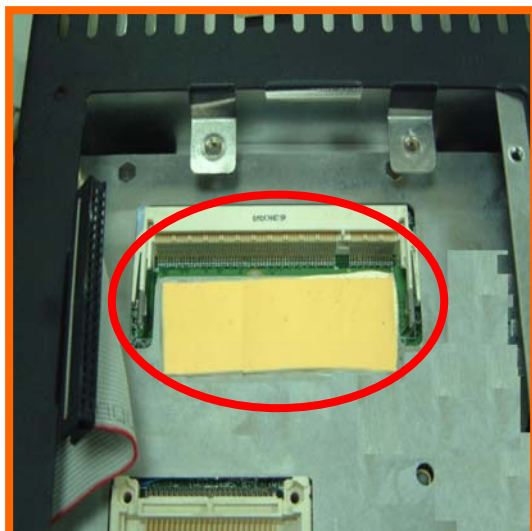


4. Lock the bottom door screws

2-3 Installing SO-DIMM

The following are step-by-step for installing the SO-DIMM

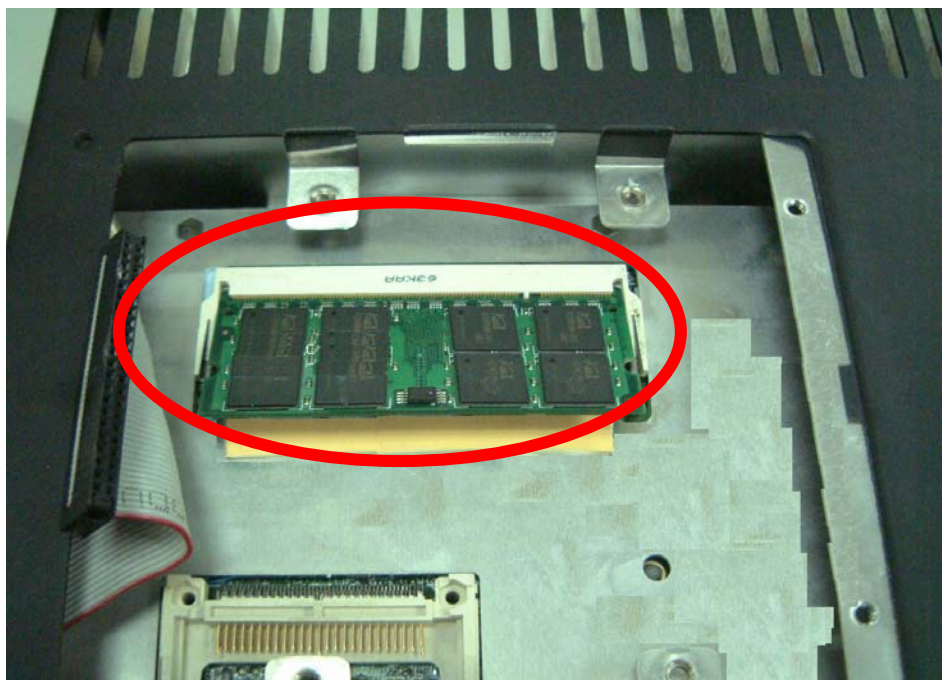
1. Remove the HDD out from the system
2. Install the SO-DIMM into the SO-DIMM socket



Two-sided IC used the 2.0mm thickness thermal pad.



Single-sided IC used the 2.0mm thickness thermal pad.



3. Back the HDD into the system

4. Lock the bottom case Door screws