

AR-ES5630FL

Installation Guide

Revision	Description	Date
1.0	Release	2008/07/04
1.1	Modify 1-3 Main system	2009/06/16

Contents

1	Introduction to AR-ES5630FL.....	3
	1-1 Description.....	3
	1-2 Packing List.....	3
	1-3 Main system.....	4-5
2	Procedure of Assembly/Disassembly.....	6
	2-1 Installing the 2.5"Hard Disk Drive (HDD).....	6-9
	2-2 Installing CF card.....	10
	2-3 Installing SO-DIMM.....	11

1. Introduction to AR-ES5630FL

AR-ES5630FL is a system product mainly for ticket control, navigation, advertising, fleet managements applications. With fan less & dust-proof design, AR-ES5630FL can satisfy the user requirements in any application environment. AR-ES5630FL has diverse physical interface in the front panel, such as plug gable CF card, KB/MS connector, 2 USB Ports, 2 10/100 LAN ports, VGA port, 4pcs console ports, LVDS port, DVI port, Audio output, External Switch Jack, Power Switch and Input Power connector. In addition, the system provides the capacity for extending I/O device by adding DRAM, CF card depending on users needs.

1.1 Discrimination

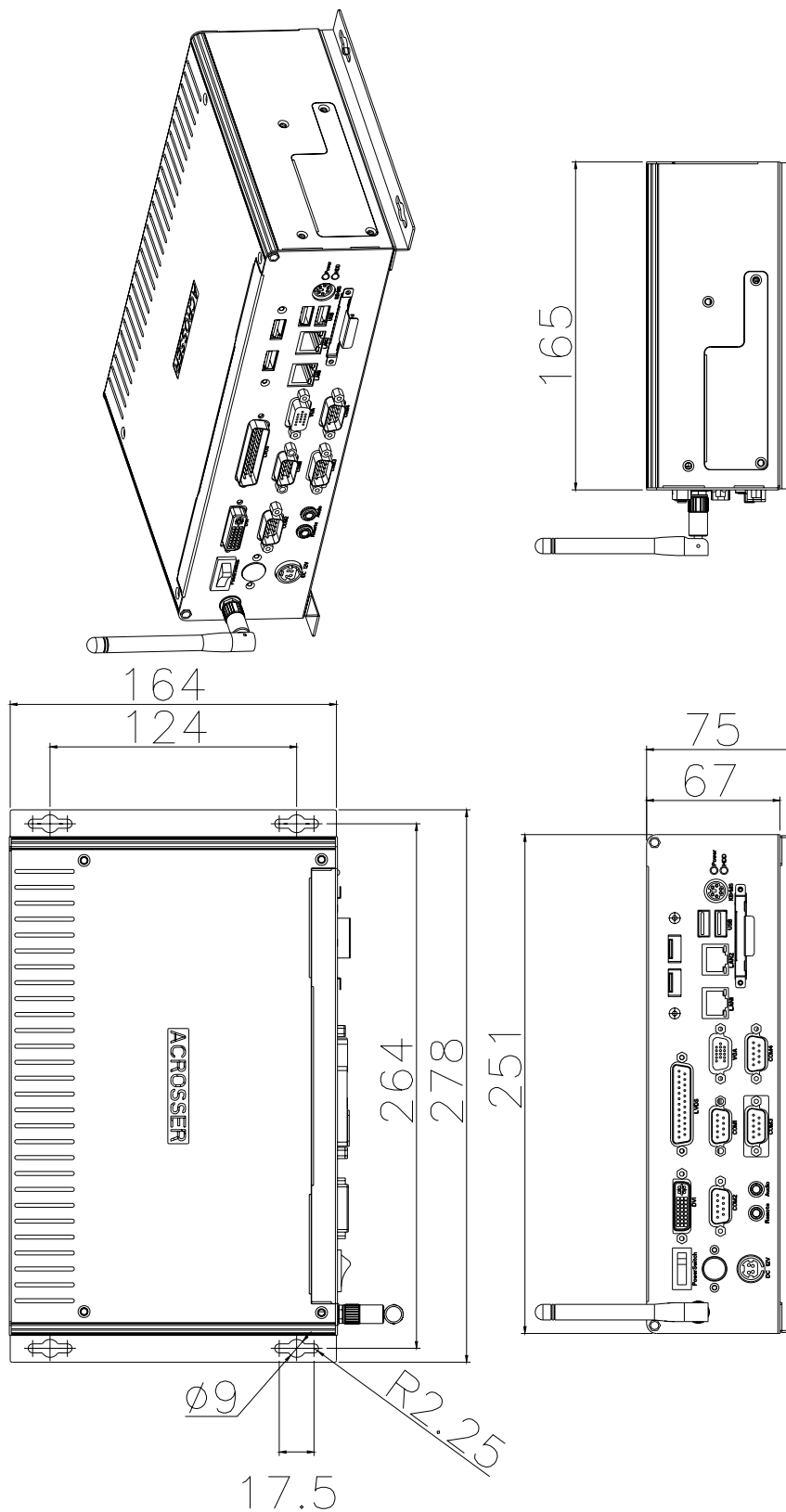
Description	AR-ES5630FL
CPU Board	AR-B5630 series
Dimensions	251×165×67 (mm)

1.2 Packing List

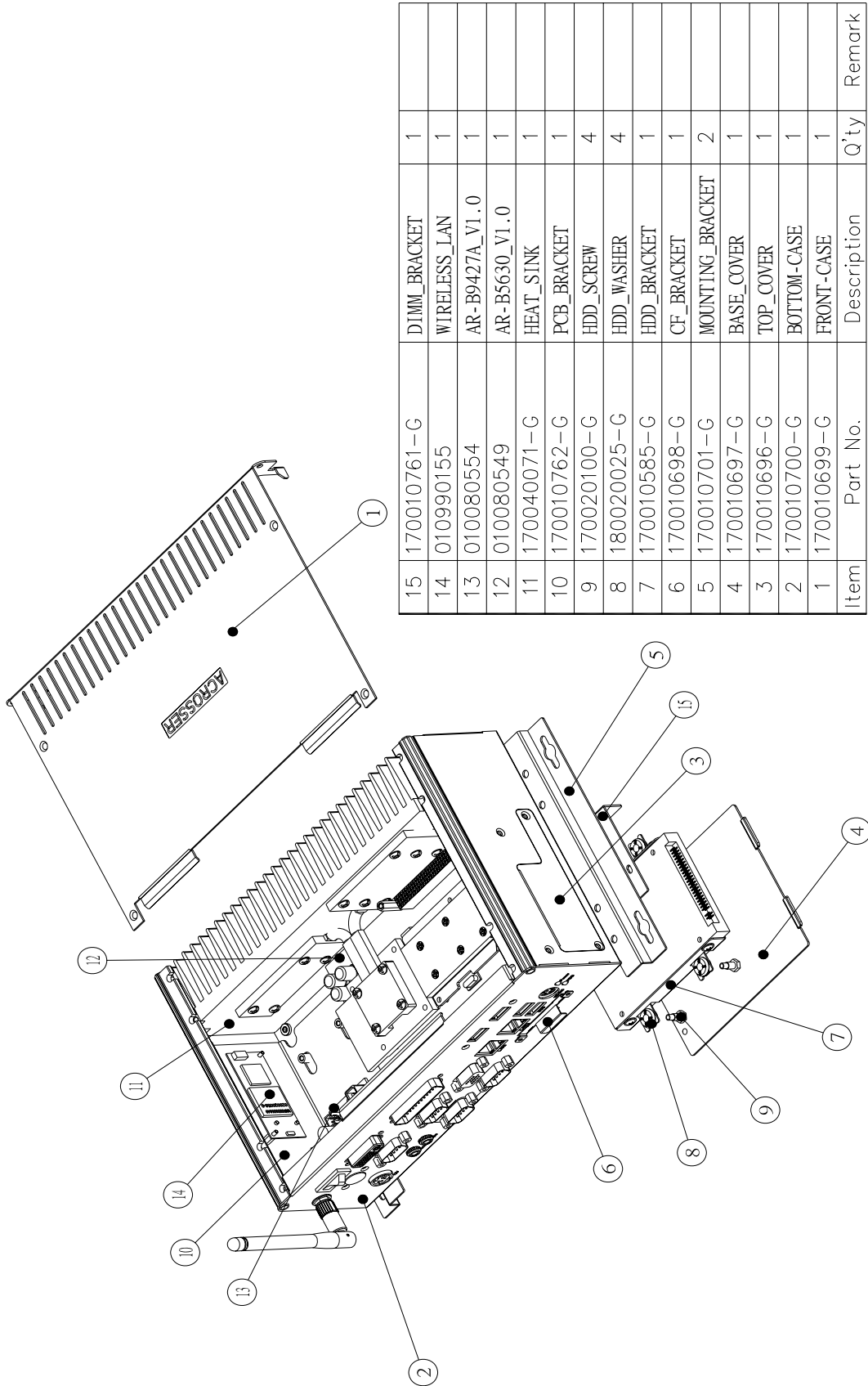
Description	Q'ty
AR-ES5630FL	1
Power Cord	1
HDD Cable	1
KB/MS Cable	1
Mounting bracket	2
Mounting bracket Screw	4
CD	1
Quick Guide (AR-B5630)	1

1.3 Main system

(1) Dimension



(2) System Configure



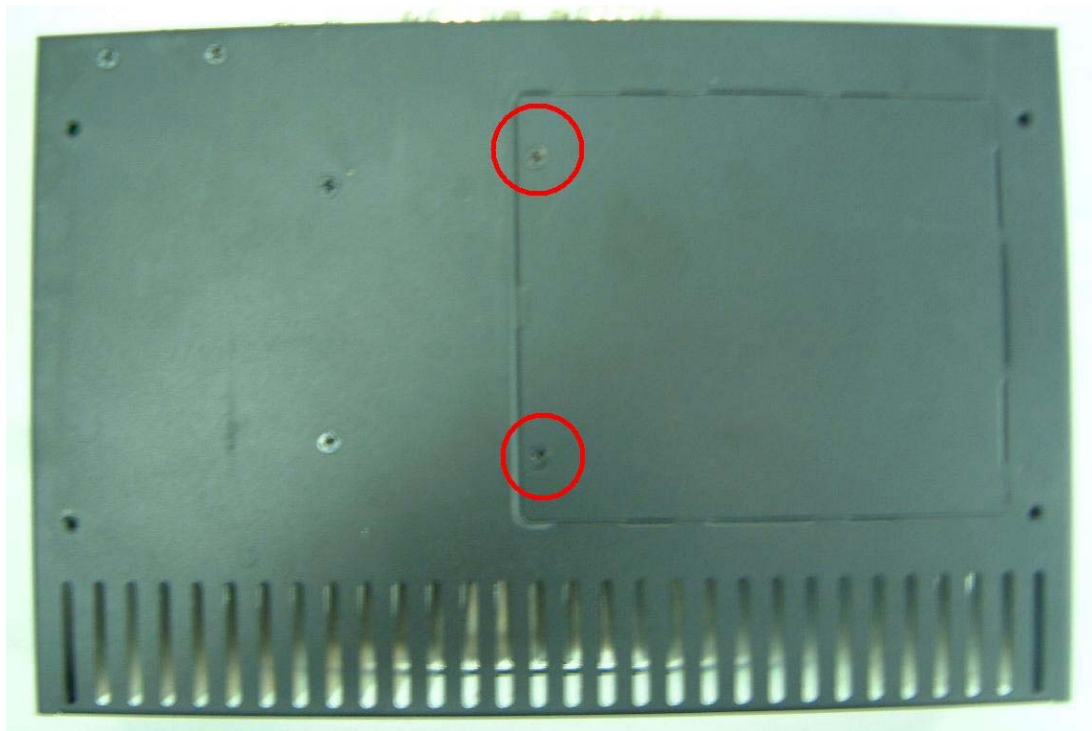
Item	Part No.	Description	Q'ty	Remark
15	170010761-G	DIMM_BRACKET	1	
14	010990155	WIRELESS_LAN	1	
13	010080554	AR-B9427A_V1.0	1	
12	010080549	AR-B5630_V1.0	1	
11	170040071-G	HEAT_SINK	1	
10	170010762-G	PCB_BRACKET	1	
9	170020100-G	HDD_SCREW	4	
8	180020025-G	HDD_WASHER	4	
7	170010585-G	HDD_BRACKET	1	
6	170010698-G	CF_BRACKET	1	
5	170010701-G	MOUNTING_BRACKET	2	
4	170010697-G	BASE_COVER	1	
3	170010696-G	TOP_COVER	1	
2	170010700-G	BOTTOM-CASE	1	
1	170010699-G	FRONT-CASE	1	
		Description	Q'ty	Remark

2. Procedure of Assembly/Disassembly

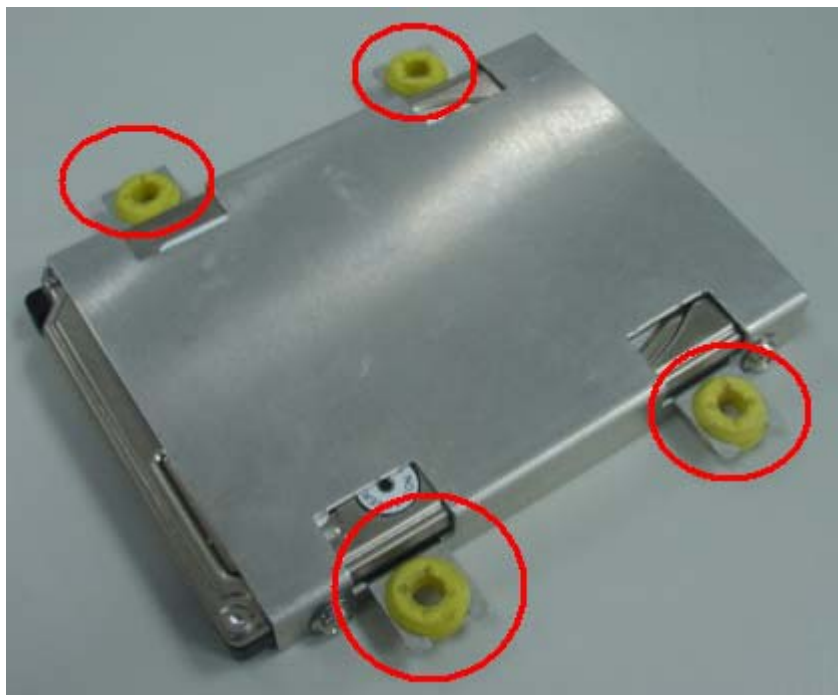
2-1 Installing the 2.5" Hard Disk Drive (HDD)

The following are step-by-step for installing 2.5"HDD device

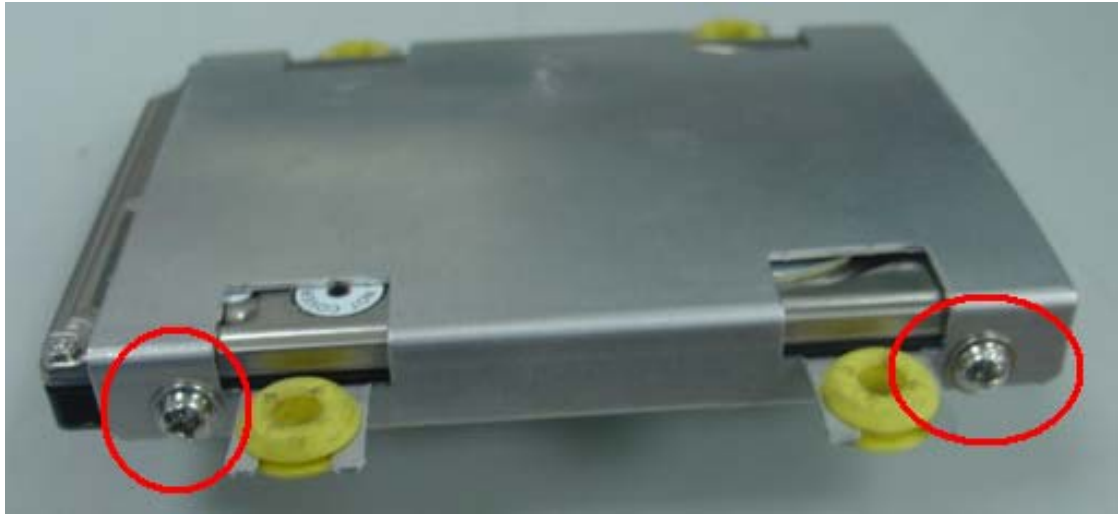
1. Remove bottom door screws (2pcs) out from the system bottom case



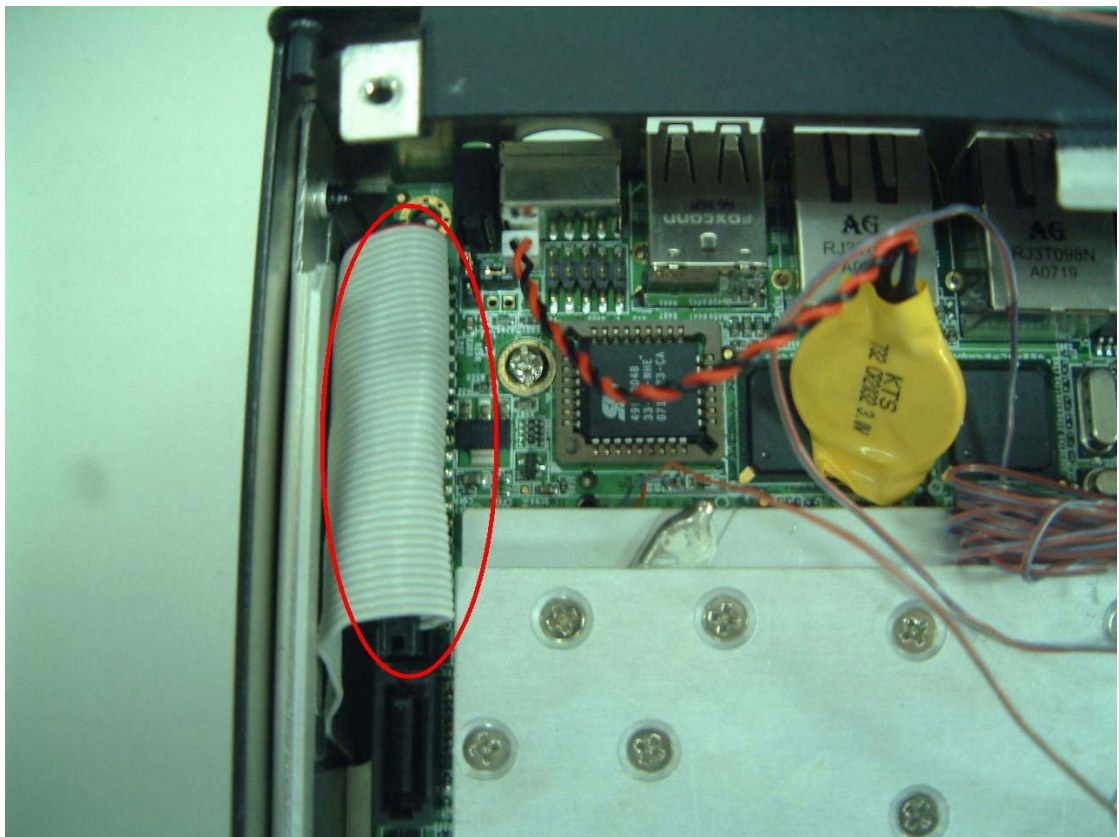
Insert the rubbers into the HDD bracket for each edge



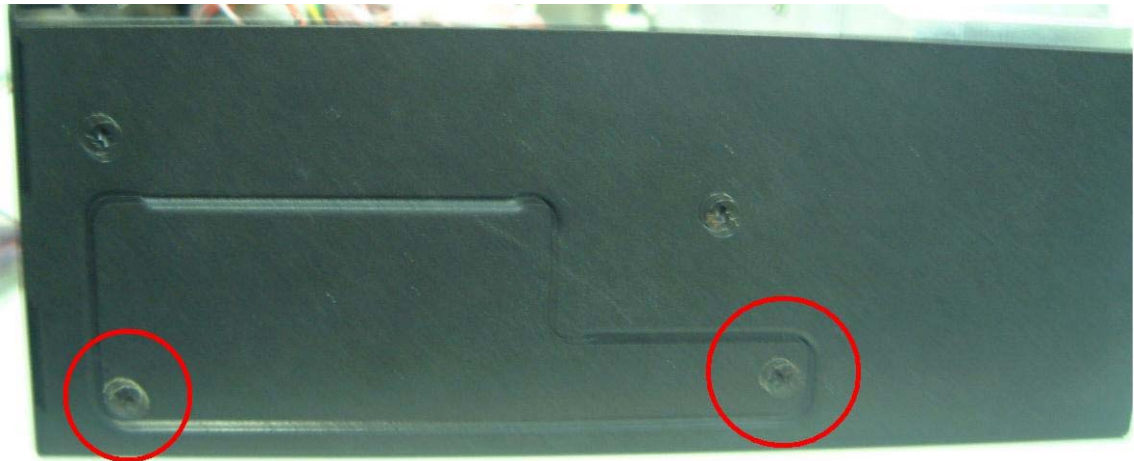
2. Lock HDD and the HDD holder together via screws (4pcs)



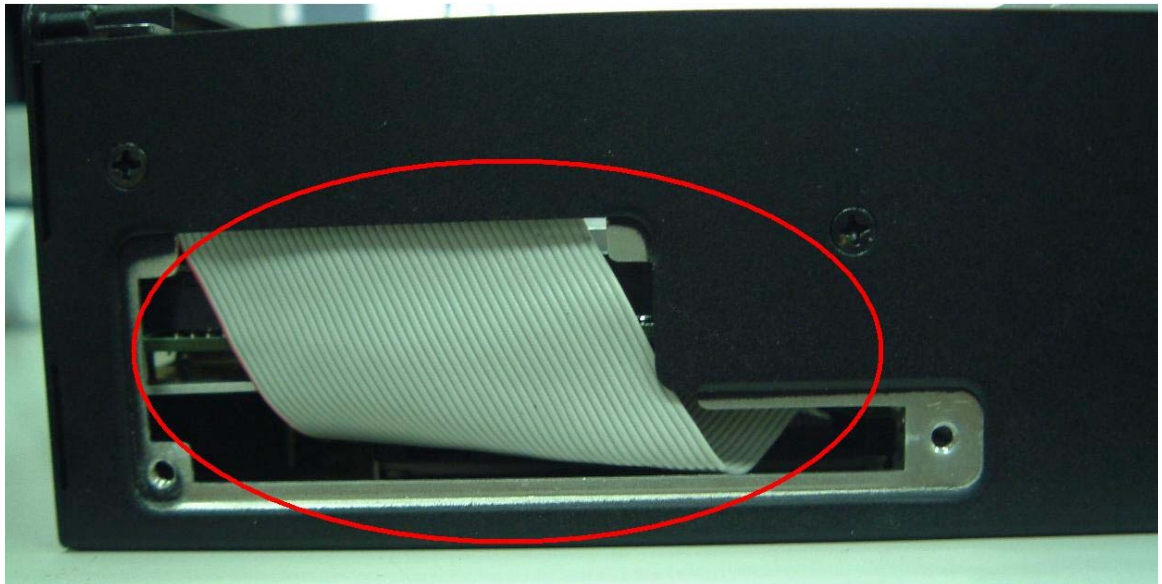
3. Plug the HDD cable into the 44-pin header connectors of the main board



4. Remove right side door screws (2pcs) out from the system bottom case

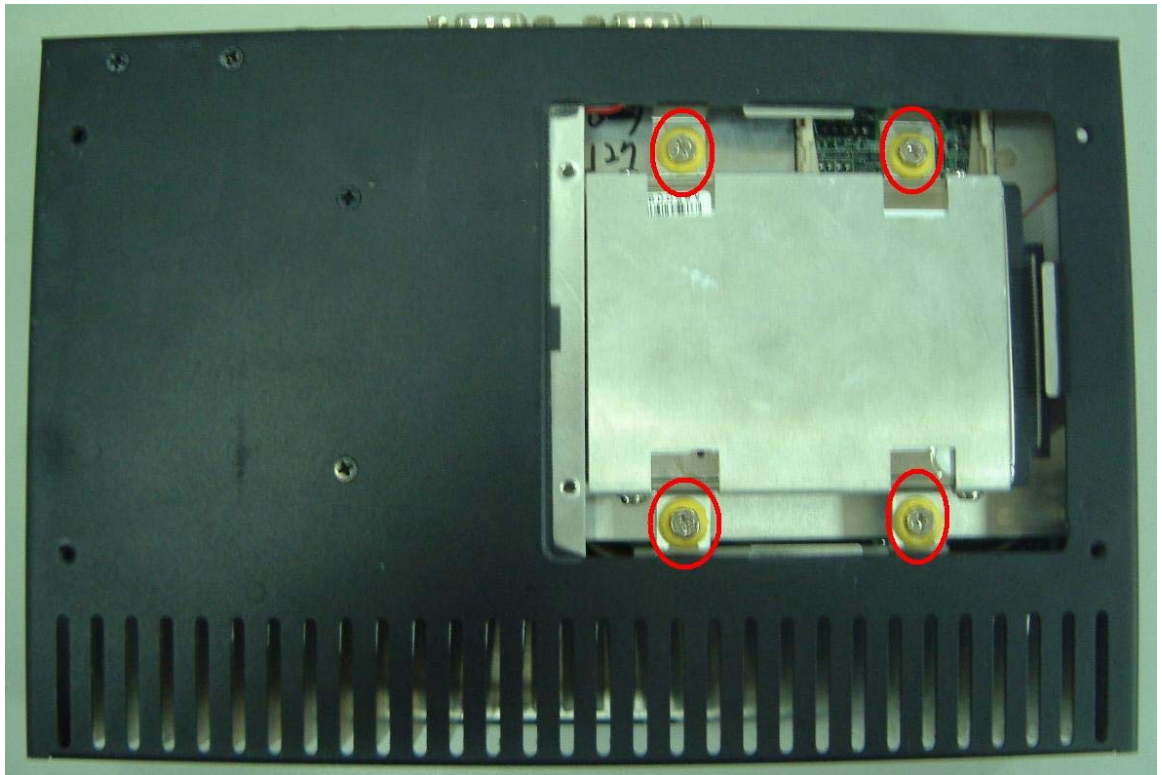


5. Route the HDD cable through and pass the main board to the upper side for the HDD module



6. Lock right side door screws (2pcs) in system bottom case

7. Lock the HDD holder to the top case by four screws



8. Insert HDD cable into the HDD module
9. Lock the door screws in system bottom case

2-2 Installing CF card

The following are step-by-step for installing CF card

1. Remove screws (2pcs) out from the CF card bracket
2. Install the CF card to the bracket



3. Insertion the CF card module to the CF card expansion slot



4. Lock the bottom door screws

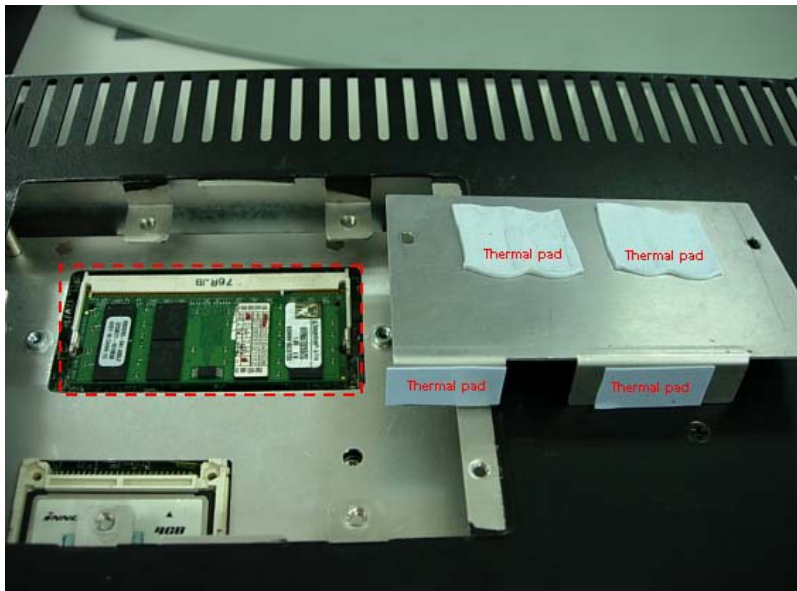
2-3 Installing SO-DIMM

The following are step-by-step for installing SO-DIMM

1. Remove the HDD holder out from the system
2. Remove screws (2pcs) of the DIMM bracket



3. Install the SO-DIMM into the SO-DIMM socket



4. Re-Install the HDD holder
5. Lock the bottom case door screw