

# **AR-ES7230FL**

## **Installation Guide**

Revision	Description	Date
1.0	Release	2008/06/16
1.1	Modify 1-3 Main system	2009/06/16

# Contents

<b>1</b>	<b>Introduction to AR-ES7230FL.....</b>	<b>3</b>
	1-1 Description.....	3
	1-2 Packing List.....	3
	1-3 Main system.....	4
<b>2</b>	<b>Procedure of Assembly/Disassembly.....</b>	<b>4</b>
	2-1 Installing the 2.5”Hard Disk Drive(HDD).....	5
	2-2 Installing CF card.....	9
	2-3 Installing SO-DIMM.....	10

# 1. Introduction to AR-ES7230FL

AR-ES7230FL is a system product mainly for ticket control, navigation, advertising, fleet managements applications. With fanless & dust-proof design, AR-ES7230FL can satisfy the user requirements in any application environment. AR-ES7230FL has diverse physical interface in the front panel, such as pluggable CF card, KB/MS connector, USB Ports, 10/100 LAN ports, VGA port, console ports, LVDS port, DVI port, Audio output, External Switch Jack, Power Switch, Input Power connector. In addition, the system provides the capacity for extending I/O device by adding DRAM, CF card depending on the users needs.

## 1.1 Discrimination (included Rubber Foot)

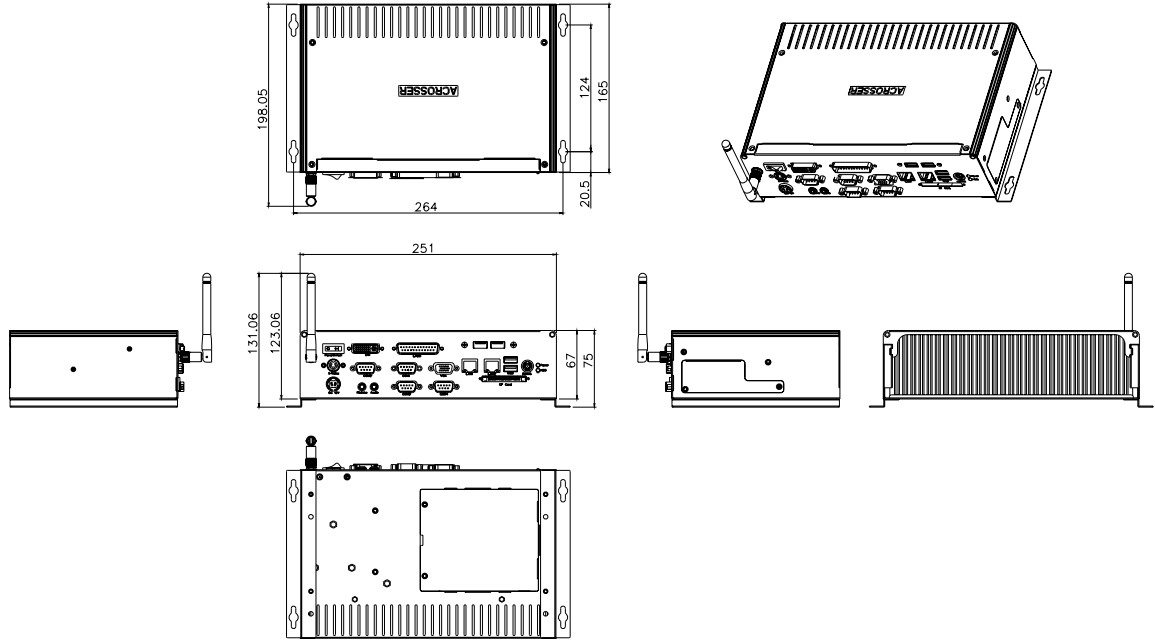
Description	AR-ES7230FL
CPU Board	AR-B7230 series
Dimensions	251×165×67 (mm)

## 1.2 Packing List

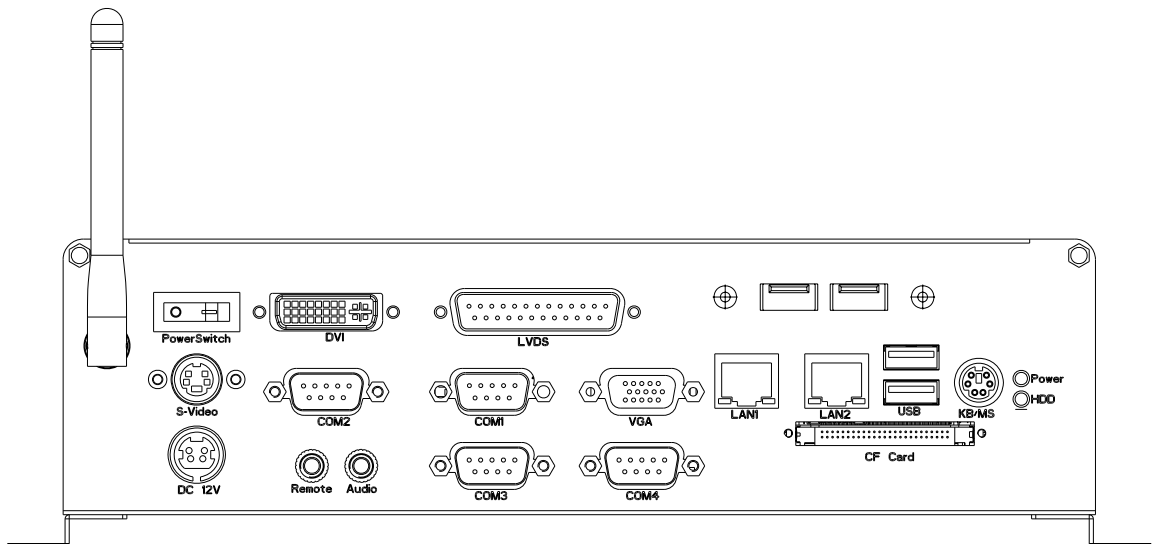
Description	Q'ty
AR-ES7230FL	1
Power Cord	1
HDD Cable	1
KB/MS Cable	1
Mounting bracket	2
Mounting bracket Screw	4
CD	1
Quick Guide (AR-B7230)	1

### 1.3 Main system

#### (1) Dimension



#### (2) Outlet (front side board)

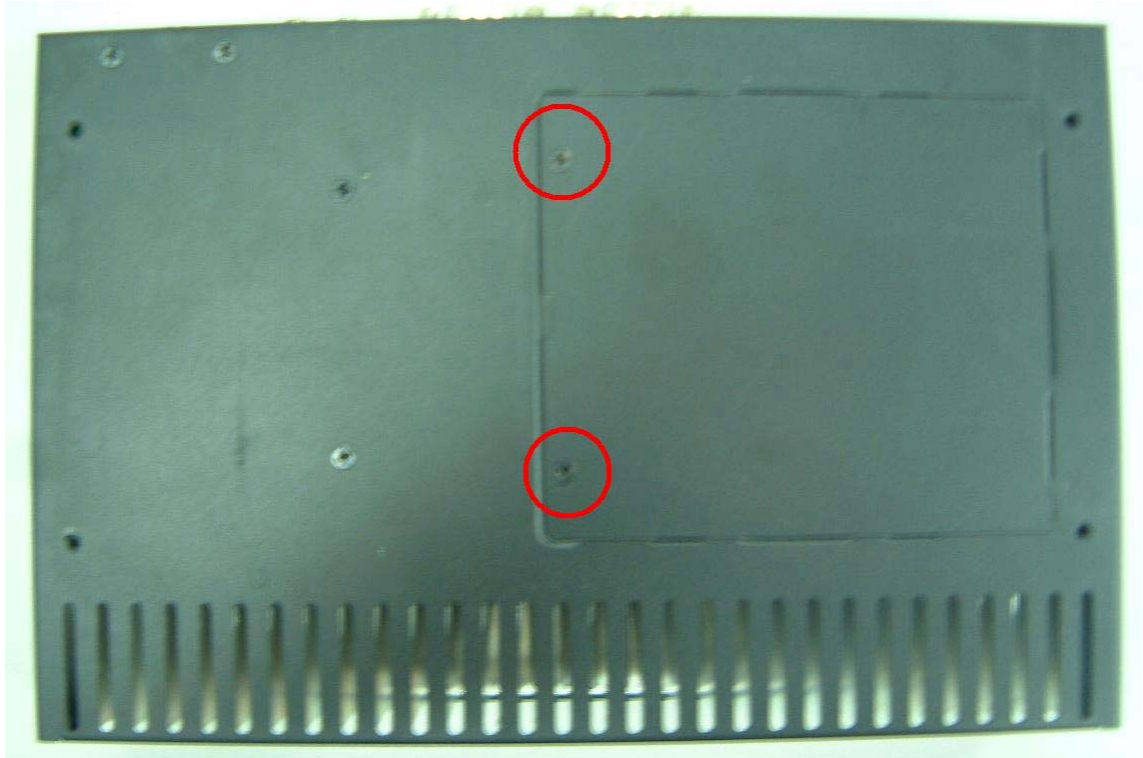


## 2. Procedure of Assembly/Disassembly

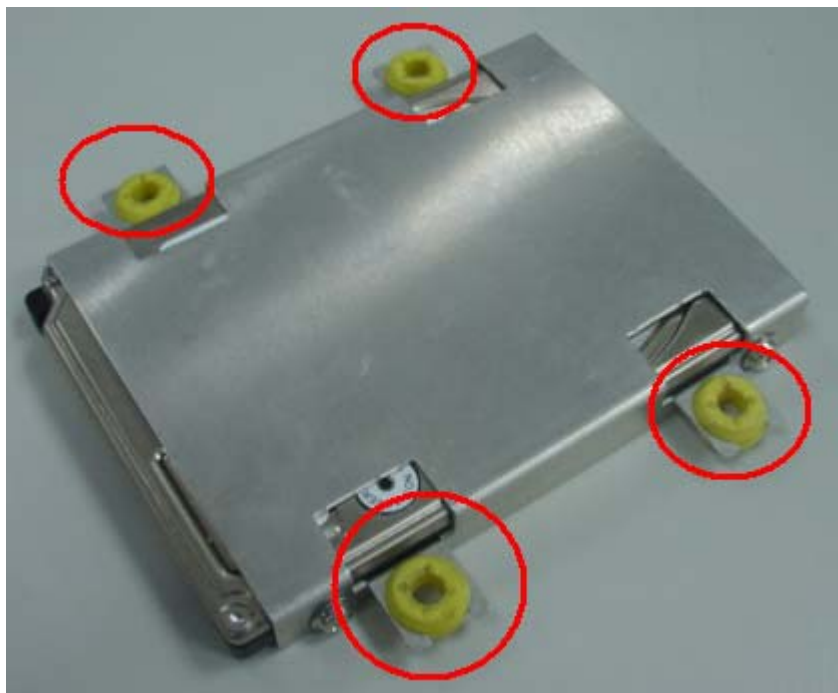
### 2-1 Installing the 2.5" Hard Disk Drive (HDD)

The following are step-by-step installation for 2.5"HDD device

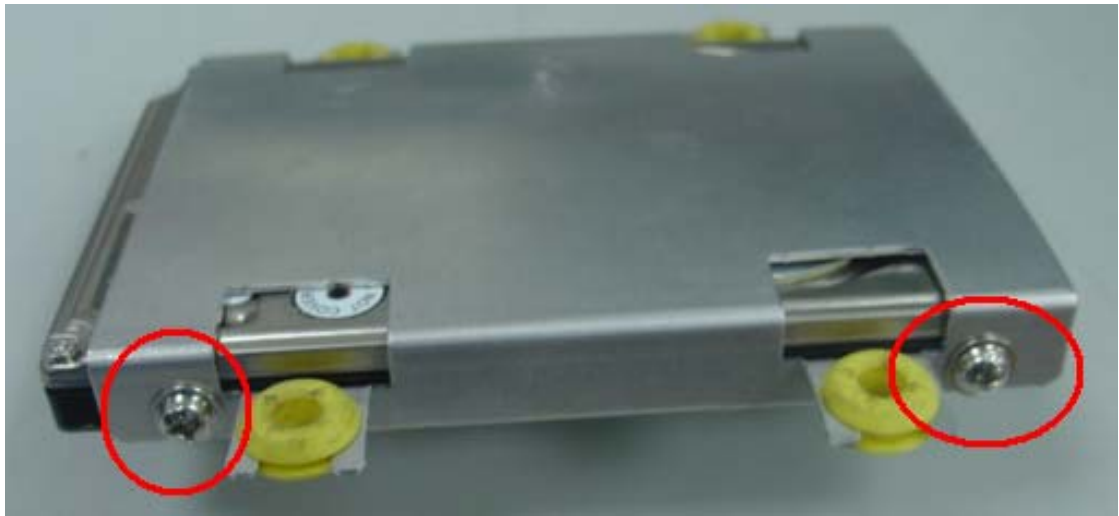
1. Remove bottom door screws (2pcs) out from the system bottom case



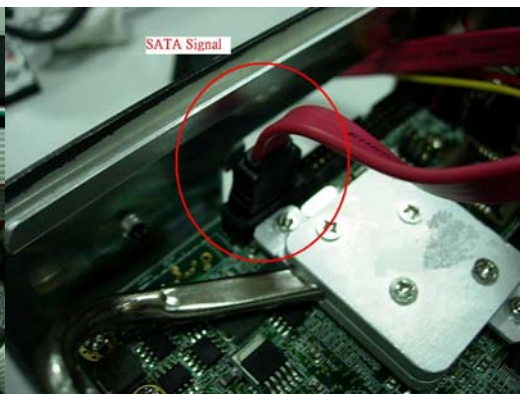
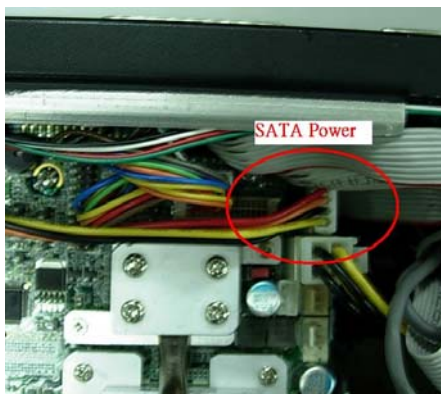
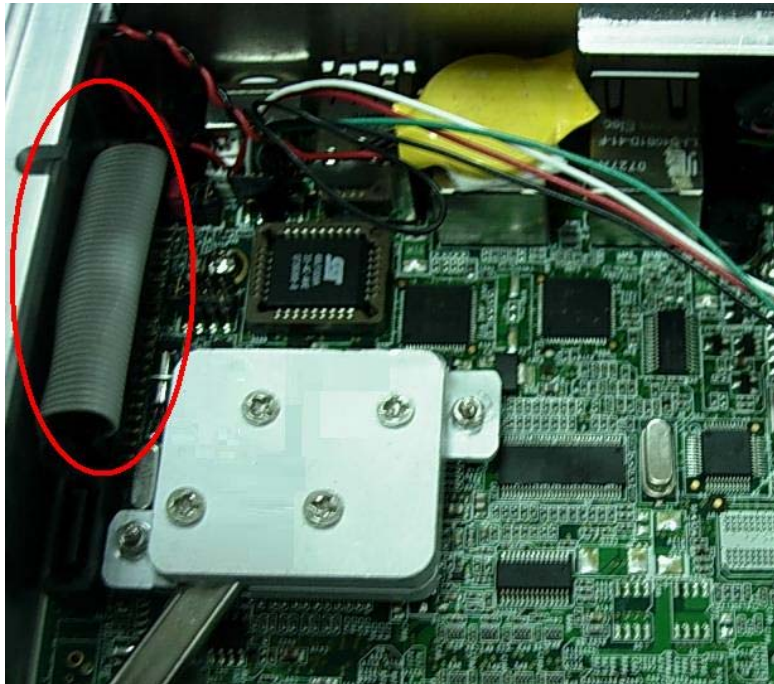
Insert the rubbers into the HDD bracket for each four edges



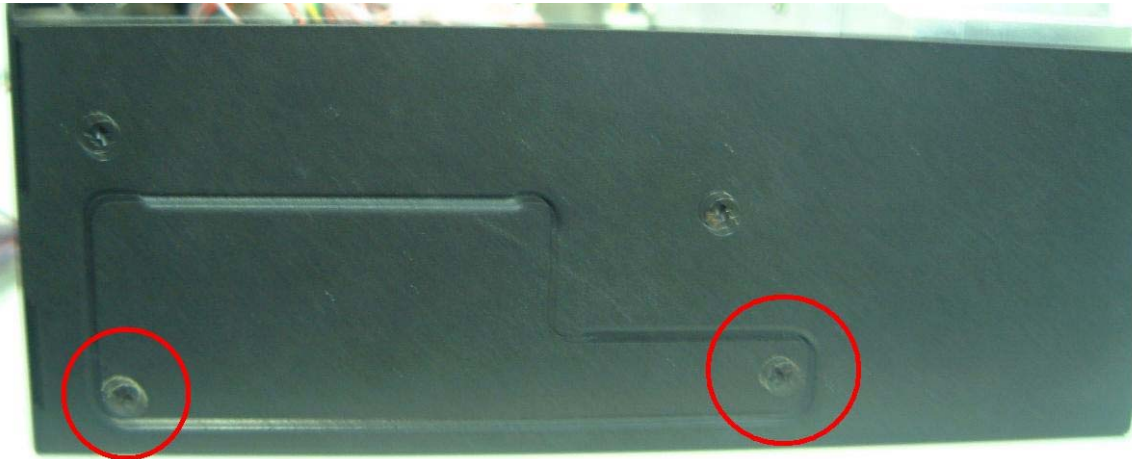
2. Lock HDD and Bracket together via screws (4pcs)



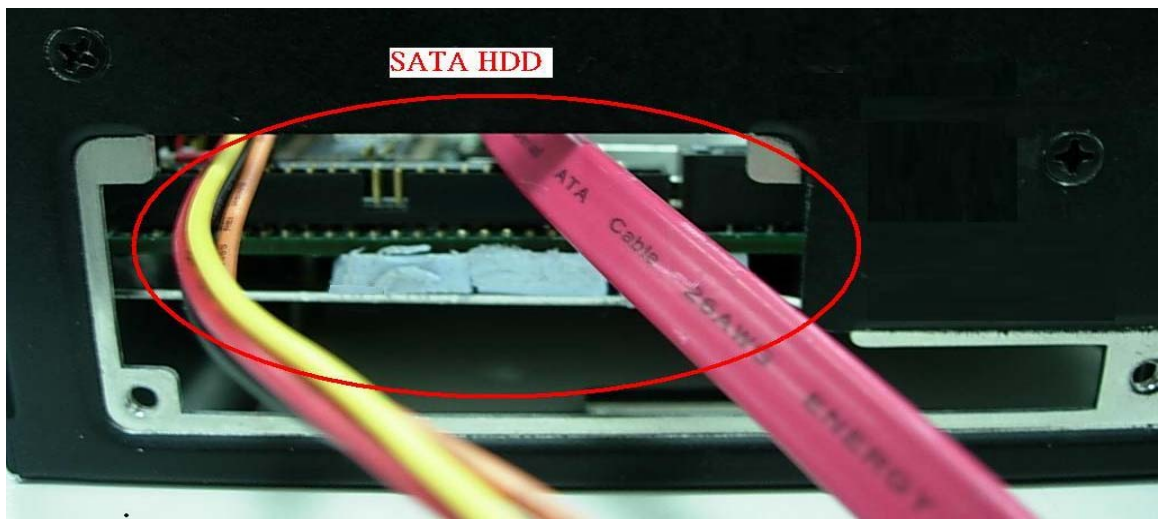
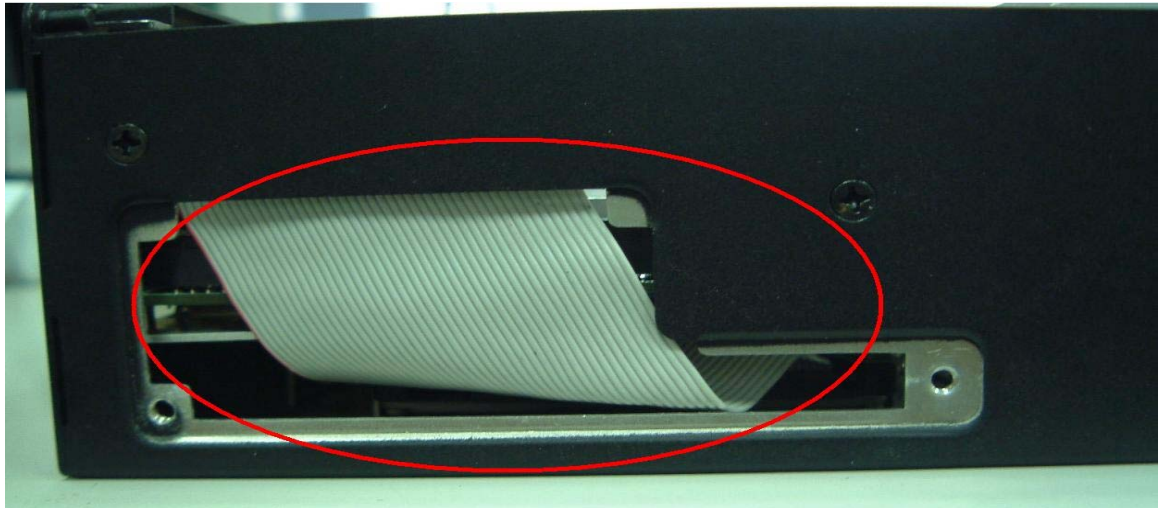
3. Plug the HDD wire-cable into the 44-pin header connectors in main board (or SATA HDD Installation)



4. Remove right side door screws (2pcs) out from the system bottom case

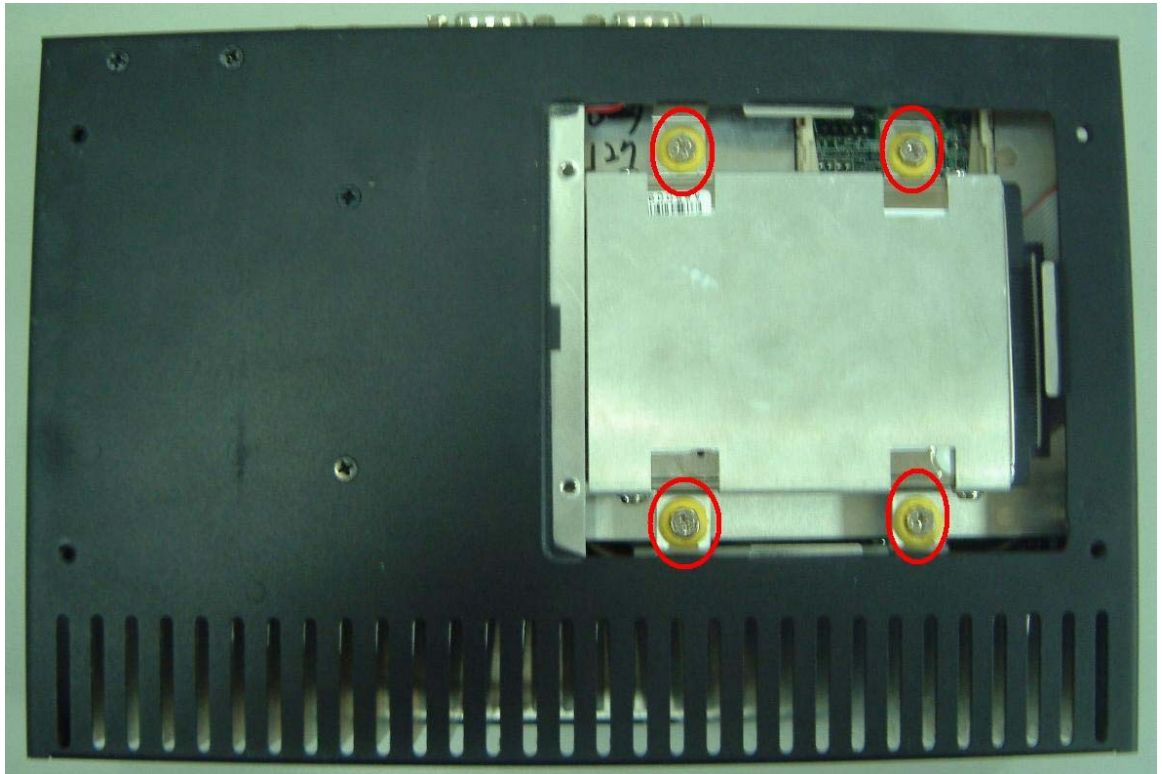


5. Route the HDD cable (for IDE HDD or SATA HDD) through the main board



6. Back and lock right side door screws (2pcs) to the system bottom case

7. Lock HDD bracket to the top case by four screws



8. Insert the HDD wire-cable into the HDD module
9. Lock the door screws to the system bottom case

## 2-2 Installing CF card

The following are step-by-step installation for CF card

1. Remove screws (2pcs) out from the bracket of CF card
2. Install CF card to the bracket



3. Insert the CF card to the CF card expansion slot



4. Lock the bottom door screws

### 2-3 Installing SO-DIMM

The following are sep-by-step installation for SO-DIMM

1. Remove the HDD device out from the system
2. Install the SO-DIMM module into the SO-DIMM socket



3. Re-cover the HDD device
4. Lock the bottom case Door screws