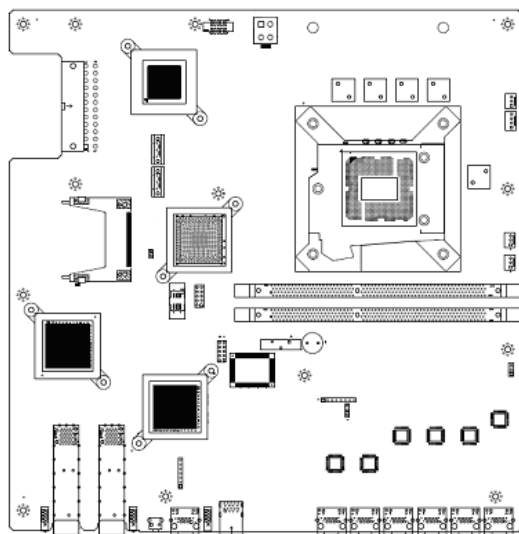


AMB-IH61N1/A/B v1.0 Quick Manual

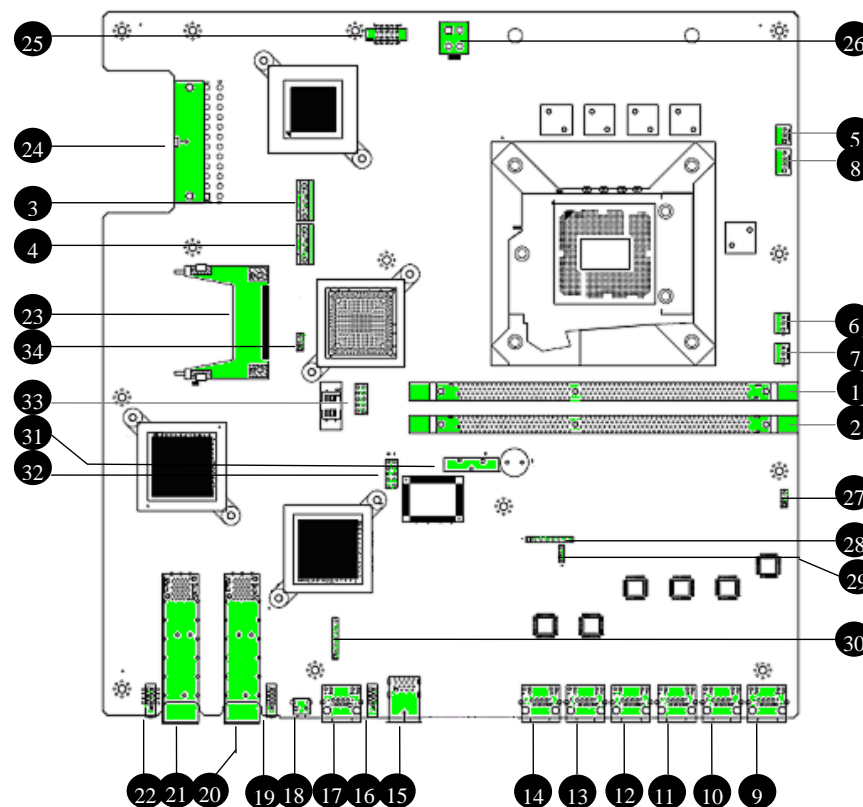
Content:

1. Main board illustration	P.1
2. Connector pin define		
a. DDR3 DIMM Connector	P.2
b. SATA Connector	P.2
c. Fan connector	P.2
d. LAN1~LAN6, CN_2USB1, LED1~LED3, COM1, RST1, CN3, CN4	P.3
e. CF Socket	P.5
f. ATX Power Connector & VGA Connector	P.5
g. Other connector	P.6

1. Main board illustration

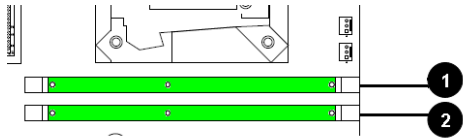


2. Locations of IO ports & Jumper settings definition



3. Connector pin define

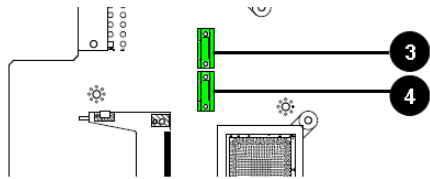
a. DDR3 DIMM Connector



1 DIMM1
2 DIMM2

Standard DDR3 DIMM connector

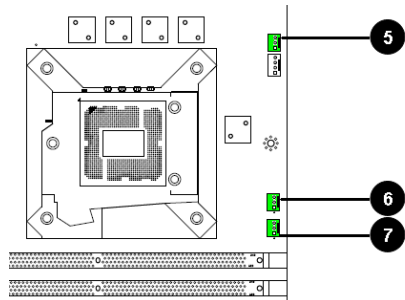
b. SATA connector



3 SATA1
4 SATA2

Standard SATA connector

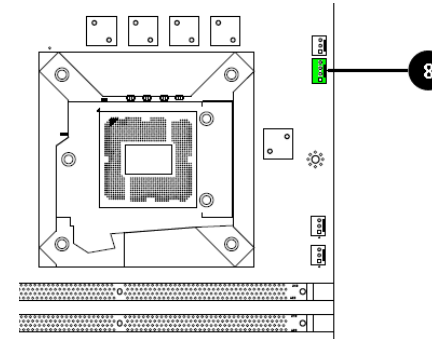
c. FAN Connector



5 SYSFAN3
6 SYSFAN2
7 SYSFAN1

PIN	Signal
1	GND
2	+12V
3	FAN Speed Detect

3 Pin, Pitch:2.54mm

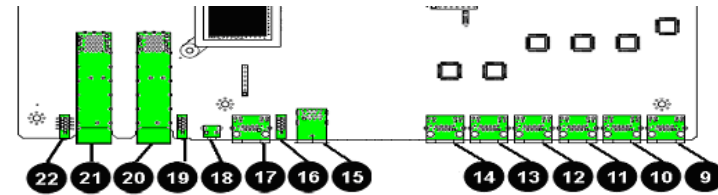


8 CPUFAN1

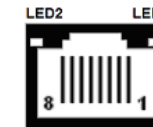
PIN	Signal
1	GND
2	+12V
3	FAN Speed Detect
4	FAN PWM Control

4 Pin, Pitch:2.54mm

d. LAN1~LAN6, CN_2USB1, LED1~ LED3, COM1, RST1, CN3, CN4

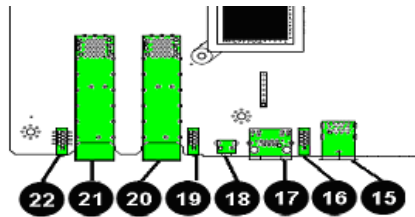


9	LAN1	RJ45 LAN Connector
10	LAN2	RJ45 LAN Connector
11	LAN3	RJ45 LAN Connector
12	LAN4	RJ45 LAN Connector
13	LAN5	RJ45 LAN Connector
14	LAN6	RJ45 LAN Connector

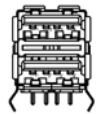


LAN LED table:

LED	ON/OFF	Status
LED1	OFF	10Mbps
	Green	100Mbps
	Orange	1000Mbps
LED2	Yellow	Link/Active
	OFF	LAN OFF

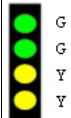


15 CN_2USB1



Standard USB 3.0 Type-A connector

16 LED3



Green1: Power ON LED.
Green2: HDD LED
Yellow1: LAN3&LAN4 Bypass LED.
Yellow2: LAN1&LAN2 Bypass LED.

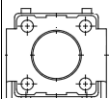
17 COM1



RS-232, RJ45 connector

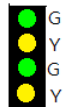
PIN	Signal	PIN	Signal
1	RTS	5	GND
2	DTR	6	SIN
3	SOUT	7	DSR
4	GND	8	CTS

18 RST1



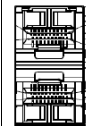
Push this button to reset the system.

19 LED2



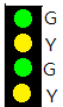
UP :
Green1: Link LED
Yellow1: Active LED
Down :
Green2: Link LED
Yellow2: Active LED

20 21 CN3, CN4



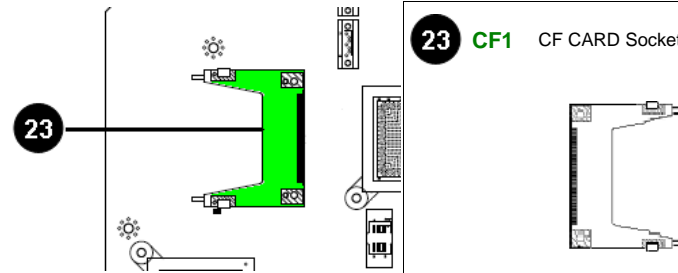
Dual SFP Connector.
1000BASE-SX/LX SMALL FORM-FACTOR PLUGGABLE (SFP) OPTICAL FIBER TRANSCEIVER OR MINI-GBIC CONNECTOR

22 LED1



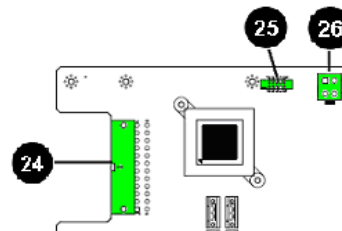
UP :
Green1: Link LED
Yellow1: Active LED
Down :
Green2: Link LED
Yellow2: Active LED

e. CF Socket



23 CF1 CF CARD Socket

f. ATX Power Connector & VGA Connector



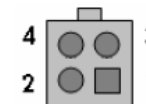
24 ATXPWR1 ATX Power Supply Input



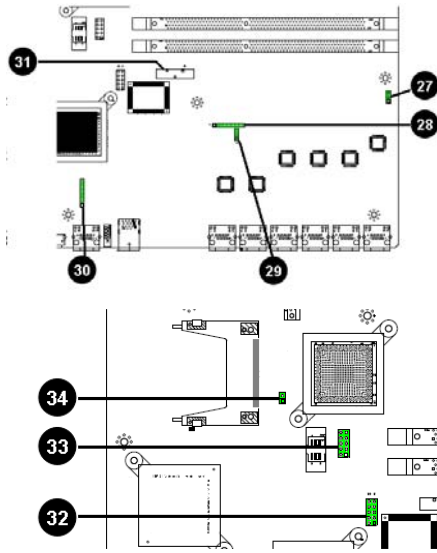
25 FP_VGA1 VGA Wafer Connector



26 ATX12V1 ATX12V Power Input



g. Other Connector



27 JP2 (For LAN1/LAN2 Bypass Function Select.).

PIN	Function
1-2	Forced Normal (Default)
2-3	Controlled By CPLD
Open	Forced Bypass

28 CPLD1 For CPLD Firmware Update

PIN	Signal	PIN	Signal
1	3VDUAL	2	G_TDO
3	G_TDI	4	NC
5	NC	6	G_TMS
7	GND	8	G_TCK

29 JP4 (For LAN3/LAN4 Bypass Function Select.).

PIN	Function
1-2	Forced Normal (Default)
2-3	Controlled By CPLD
Open	Forced Bypass

30 LCM1 LCM signal connector

PIN	Signal	PIN	Signal
1	3VDUAL	2	G_TDO
3	G_TDI	4	NC
5	NC	6	G_TMS
7	GND	8	G_TCK

31 RTC1 CMOS Backup Battery:

An onboard battery saves the CMOS memory to keep the BIOS information stays on even after disconnected your system with power source. Nevertheless, this backup battery exhausts after some five years.

32 LPC1 LPC Header For Port'80 Debug

PIN	Signal	PIN	Signal
1	33MHz	2	LAD1
3	Reset	4	LAD0
5	FRAME#	6	VCC3
7	LAD3	8	GND
9	LAD2	10	GND

33 SPI1 SPI BIOS firmware Update Header

PIN	Signal	PIN	Signal
1	CS0	2	VCC3
3	MISO	4	HOLD#
5	WP#	6	SPICLK
7	GND	8	MOSI
9	NC	10	NC

34 CCMOS1 CMOS Memory Clearing Header

Pins 1 and 2 OPEN (Default): Normal operation.

Pins 1 and 2 shorted: Clear CMOS memory.

Configuration	Pin 1	Pin 2
Normal (Default)	Open	Open
Clear CMOS	Shorted	Shorted

Extended Models Information

Model Name	Model Parts Difference	Remark
ANR-IH61N1	Intel GbE LAN x6	
ANR-IH61N1A	Intel GbE LAN x6 + 2 Fiber	CN3 20
ANR-IH61N1B	Intel GbE LAN x6 + 4 Fiber	CN3 20 CN4 21