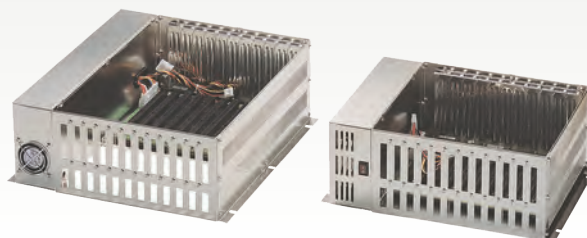


AR-CC6 Series | AR-CC11 Series

Industrial Computing



AR-CC6 Series

6 x ISA Slot Half/Full Size IPC Chassis

AR-CC11 Series

11 x ISA Slot Half/Full Size IPC Chassis

Specification

AR-CC6 Series

General	
Construction	Heavy duty steel
Control	Power On/Off switch
Cooling Fan	One for Plug-in Cards
Dimension (W x H x D)	AR-CC6MP/A : 226mm x 132mm x 244mm AR-CC6LP/A : 226mm x 132mm x 365mm
Weight	AR-CC6MP/A : 3.0kg AR-CC6LP/A : 3.6kg
Power Supply	
Output Rating	100W
Input Voltage	85V AC ~ 264V AC
Output Voltage	+5V@10A, +12V@3.5A, -5V@0.5A, -12V@0.5A
Ordering Information	
AR-CC6MP/A	6 x ISA Slot Half Size IPC Chasis
AR-CC6LP/A	6 x ISA Slot Full Size IPC Chasis

AR-CC11 Series

General	
Construction	Heavy duty steel
Control	Power On/Off switch
Cooling Fan	One for Plug-in Cards
Dimension (W x H x D)	AR-CC11MP/A : 330mm x 132mm x 244mm AR-CC11LP/A : 330mm x 132mm x 365mm
Weight	AR-CC11MP/A : 3.6kg AR-CC11LP/A : 4.0kg
Power Supply	
Output Rating	100W
Input Voltage	85V AC ~ 264V AC
Output Voltage	+5V@10A, +12V@3.5A, -5V@0.5A, -12V@0.5A
Ordering Information	
AR-CC11MP/A	11 x ISA Slot Half Size IPC Chasis
AR-CC11LP/A	11 x ISA Slot Full Size IPC Chasis