

**AR-R5500 Serial
Installation Guide**

Contents

1	Introduction of AR-R5500.....	03
	1-1 Discrimination.....	03
	1-2 Packing List	03
2	Procedure of Assembly/Disassembly.....	04
	2-1 Installing the 2.5"Hard Disk Drive(HDD).....	04
	2-2 Installing the Memory card.....	07
	2-3 Installing Extension PCI card	08
	2-4 Installing CPU and HeatsinkModule	10

1. Introduction of AR-R5500

AR-R5500 is a system product mainly for industry PC application. With powerful Intel CPU core & diverse memory card extension (mini-PCI, CF, SO-DIM), AR-R5500 can satisfy the users requirement in any Industry application environment. AR-R5500 has diverse physical interface in the front panel, such as 8 or 6*10/100 LAN connectors, build-in LEDs, 2 USB Ports, one COM port, Power Button & Reset Button, Keyboard/Mouse. In addition, the system provides the capacity for extending I/O device by adding DRAM, VGA/PCI card & CF card depends on users needs.

1.1 Discrimination (included Rubber Foot)

Description	AR-R5500
CPU Board	AR-B5500series
Dimensions	440x44x370 (mm)

1.2 Packing List

Description	Q'ty
AR-R5500	1
Power Core	1
CD	1
HDD/KB/MS Cable	1
Mounting Bracket (+screw)	2

2. Procedure of Assembly/Disassembly

2-1 Installing the 2.5"/3.5" Hard Disk Drive (HDD)

The following are instructions for installation.

1. Remove the power via un-plug the power cord.
2. Unscrew the two screws in top cover of AR-R5500, as Fig-01.



Fig. 01 Remove the top cover

3. Installing the rubbers on the HDD bracket.
4. Place HDD into HDD bracket and lock HDD and Bracket by screws (4pcs), as Fig-02.



Fig-02 HDD bracket with HDD body

5. Connect IDE cable to HDD,
6. Place HDD module (HDD+HDD bracket) back to the case
7. Lock HDD bracket to the chassis by four screws and put HDD with IDE cable, as Fig-03.

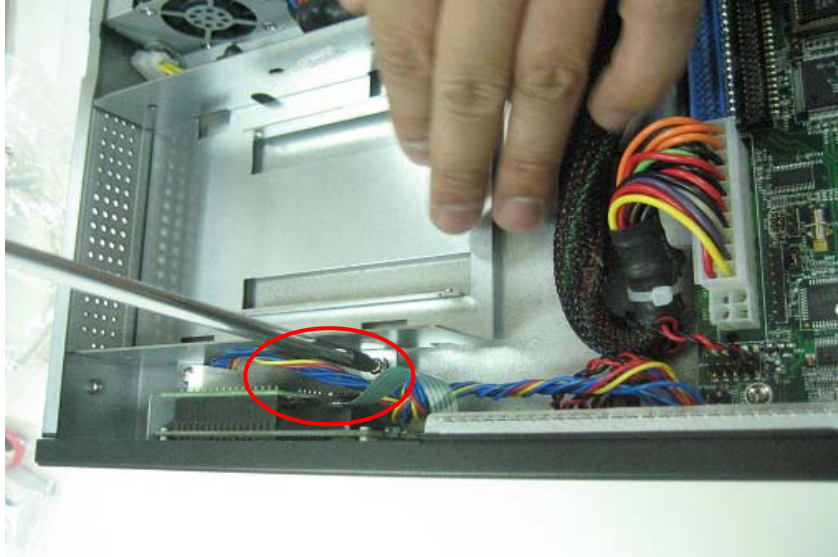


Fig-03. Lock HDD bracket with IDE cable

8. Lock the two screws in top cover of AR-R5500, as Fig-04.



Fig-04 Lock the top cover

2-2 Installing CF card

The following are instructions for installation.

1. Remove the Upper door by removing the screws, as Fig-05.



Fig-05 Chassis door in bottom case

2. Installed the CF card, as Fig-06

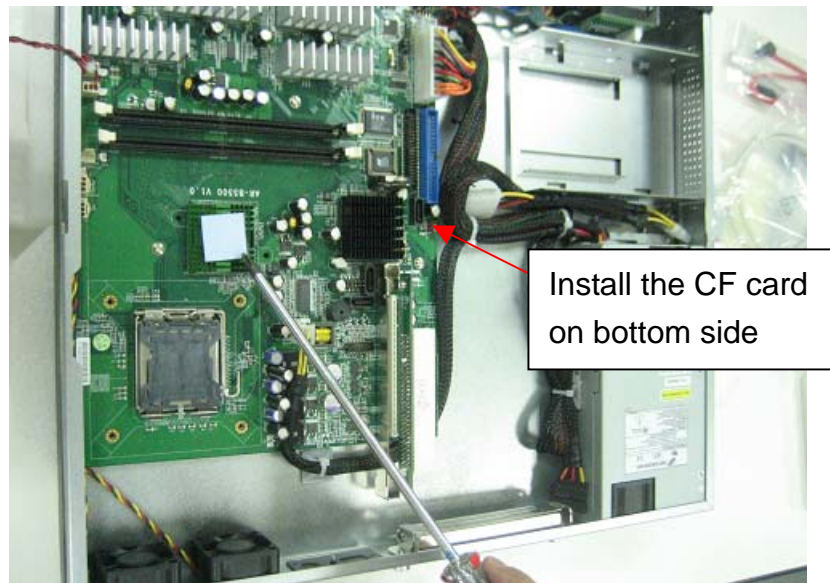


Fig-06 Install the card

2-3 Installing Extension PCI Card

The following are instructions for PCI card installation.

1. AR-R5500 can be extended with a PCI card.
2. Unscrew the two screws in top cover of AR-R5500, as Fig-07.

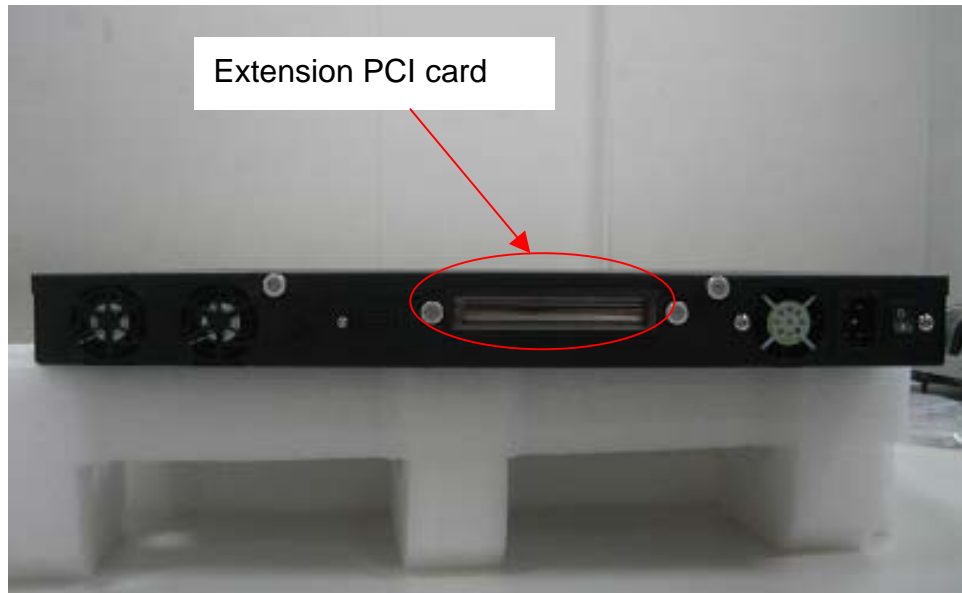


Fig-07 AR-R5500 Rear View

3. Remove the dummy bracket in PCI slot via unlock the screw as shown in Fig-08.

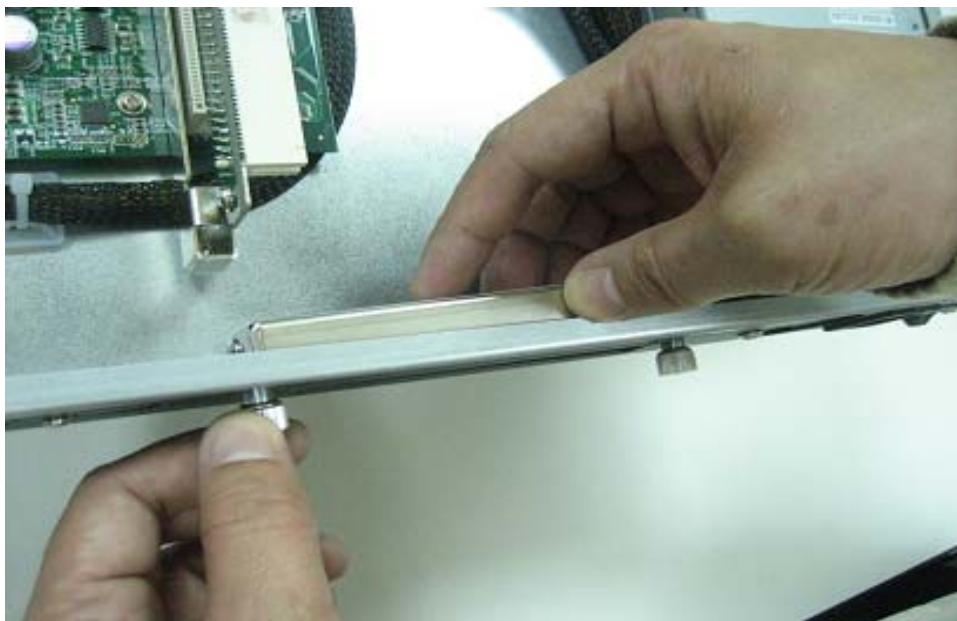


Fig-08. unlock the screw for PCI card

4. Lock the holder and riser card via locking the screw as shown in Fig-09

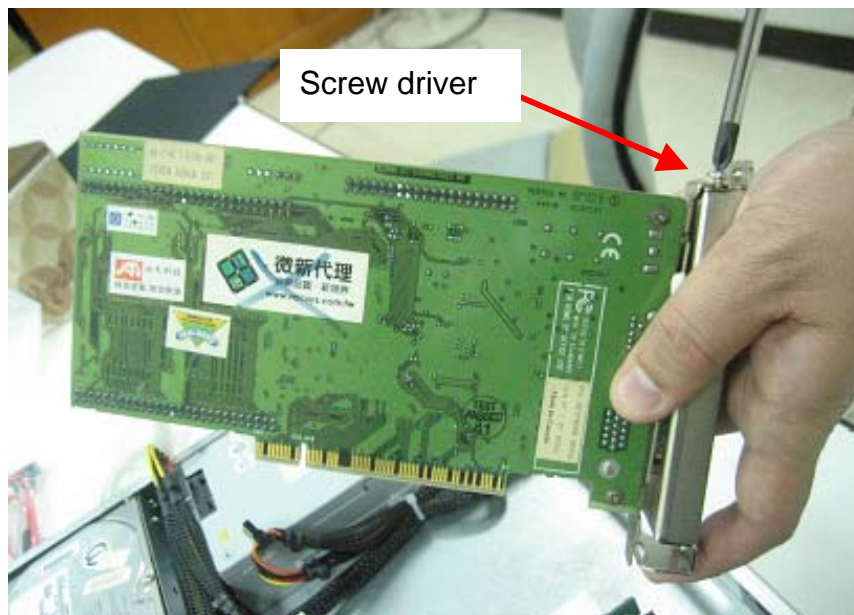


Fig-09 Lock PCI card

5. Plug the extension PCI card into Riser card and adjust the card into the holder as shown in Fig-10

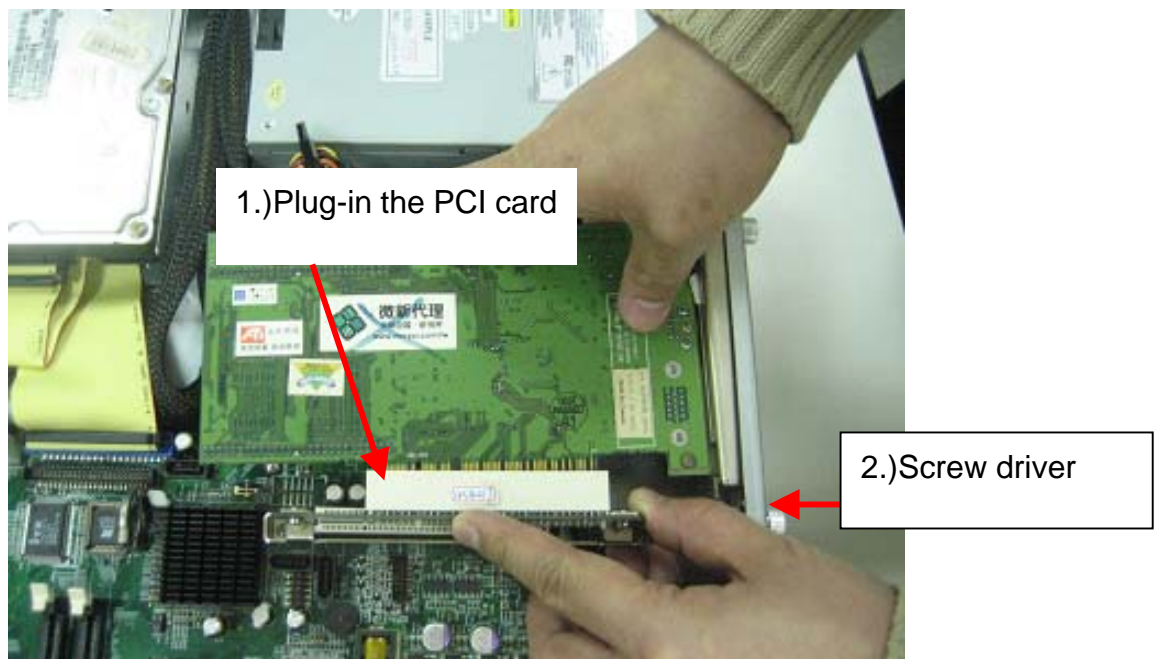


Fig-10 Install PCI card

2-4 Installing CPU and Heatsink Module

The following are instructions for CPU and Heatsink Module installation.

1. Take off the air flow cover of AR-R5500, as Fig-11



Fig-11 Take off the air flow cover

2. Take off the Heatsink Module of AR-R5500, as Fig-12

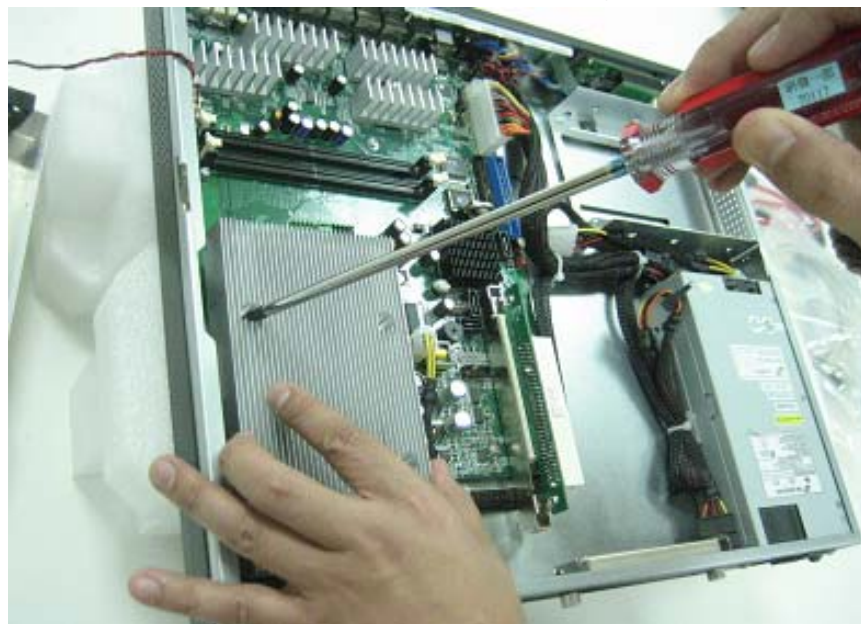


Fig-12 Take off the Heatsink Module