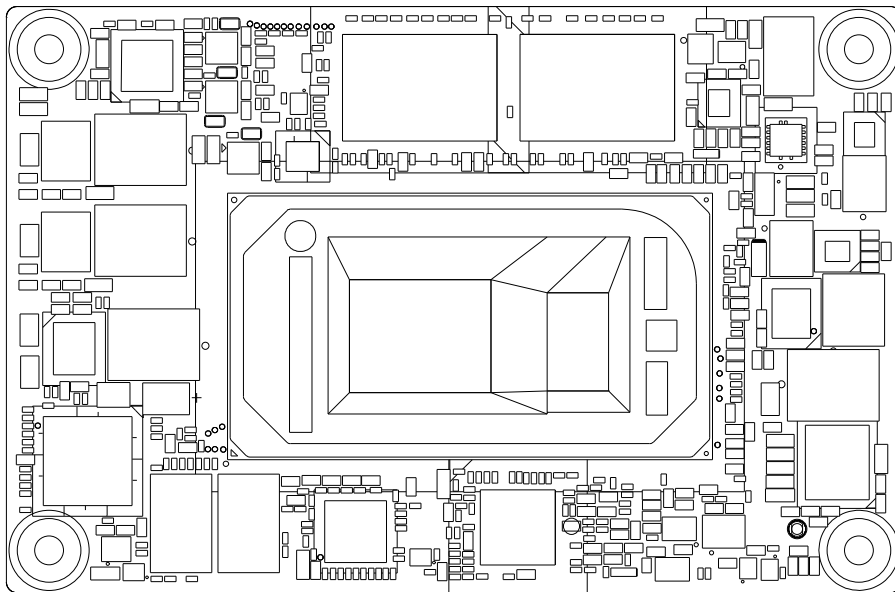
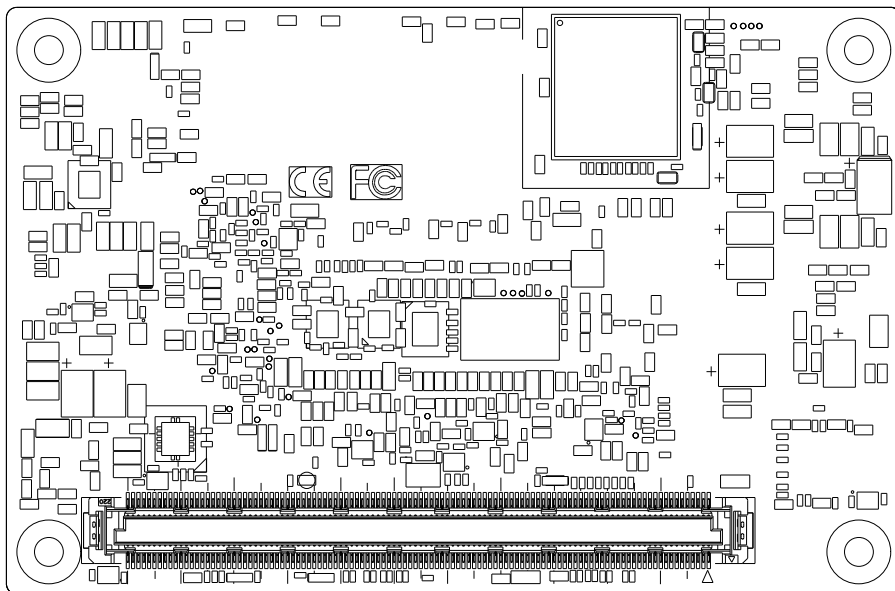


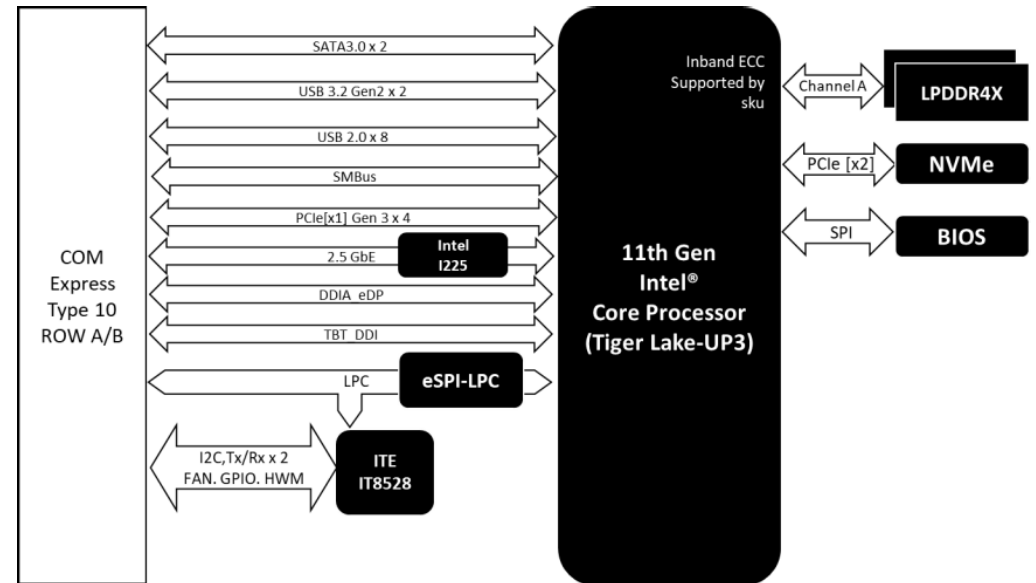
Top View

Bottom View

Row A/B Pin Assignments

Pin #	Row A	Pin #	Row B
A1	GND (FIXED)	B1	GND (FIXED)
A2	GBE0 MDI3-	B2	GBE0_ACT#
A3	GBE0 MDI3+	B3	LPC_FRAME#
A4	GBE0 LINK100#	B4	LPC_AD0
A5	GBE0 LINK1000#	B5	LPC_AD1
A6	GBE0 MDI2-	B6	LPC_AD2
A7	GBE0 MDI2+	B7	LPC_AD3
A8	GBE0_LINK#	B8	N.C.
A9	GBE0 MDI1-	B9	N.C.
A10	GBE0 MDI1+	B10	LPC_CLK
A11	GND (FIXED)	B11	GND (FIXED)
A12	GBE0 MDI0-	B12	PWRBTN#
A13	GBE0 MDI0+	B13	SMB_CK
A14	N.C.	B14	SMB_DAT
A15	SUS_S3#	B15	SMB_ALERT#
A16	SATA0_TX+	B16	SATA1_TX+
A17	SATA0_TX-	B17	SATA1_TX-
A18	SUS_S4#	B18	SUS_STAT#
A19	SATA0_RX+	B19	SATA1_RX+
A20	SATA0_RX-	B20	SATA1_RX-
A21	GND (FIXED)	B21	GND (FIXED)
A22	USB3_RXN0	B22	USB3_TXN0
A23	USB3_RXP0	B23	USB3_TXP0
A24	SUS_S4#	B24	PWR_OK
A25	USB3_RX1_N	B25	USB3_TX1_N
A26	USB3_RX1_P	B26	USB3_TX1_P
A27	BATLOW#	B27	WDT
A28	ATA_ACT#	B28	N.C.
A29	AC_SYNC	B29	N.C.
A30	AC_RST#	B30	AC_SDIN0
A31	GND (FIXED)	B31	GND (FIXED)
A32	AC_BITCLK	B32	SPKR
A33	AC_SDOUT	B33	I2C_CK
A34	BIOS_DIS0#	B34	I2C_DAT
A35	THRMTRIP#	B35	THRM#
A36	USB6-	B36	USB7-
A37	USB6+	B37	USB7+
A38	USB_6_7_OC#	B38	USB_4_5_OC#
A39	USB4-	B39	USB5-
A40	USB4+	B40	USB5+
A41	GND (FIXED)	B41	GND (FIXED)
A42	USB2-	B42	USB3-
A43	USB2+	B43	USB3+
A44	USB_2_3_OC#	B44	USB_0_1_OC#
A45	USB0-	B45	USB1-
A46	USB0+	B46	USB1+

Pin #	Row A	Pin #	Row B
A47	VCC_RTC	B47	N.C.
A48	N.C.	B48	N.C.
A49	N.C.	B49	SYS_RESET#
A50	LPC_SERIRQ	B50	CB_RESET#
A51	GND (FIXED)	B51	GND (FIXED)
A52	N.C.	B52	N.C.
A53	N.C.	B53	N.C.
A54	GPI0	B54	GPO1
A55	N.C.	B55	N.C.
A56	N.C.	B56	N.C.
A57	GND	B57	GPO2
A58	PCIE_TX3+	B58	PCIE_RX3+
A59	PCIE_TX3-	B59	PCIE_RX3-
A60	GND (FIXED)	B60	GND (FIXED)
A61	PCIE_TX2+	B61	PCIE_RX2+
A62	PCIE_TX2-	B62	PCIE_RX2-
A63	GPI1	B63	GPO3
A64	PCIE_TX1+	B64	PCIE_RX1+
A65	PCIE_TX1-	B65	PCIE_RX1-
A66	GND	B66	WAKE0#
A67	GPI2	B67	WAKE1#
A68	PCIE_TX0+	B68	PCIE_RX0+
A69	PCIE_TX0-	B69	PCIE_RX0-
A70	GND (FIXED)	B70	GND (FIXED)
A71	EDP_TX2_P	B71	DDIO_PAIR0+
A72	EDP_TX2_N	B72	DDIO_PAIR0-
A73	EDP_TX1_P	B73	DDIO_PAIR1+
A74	EDP_TX1_N	B74	DDIO_PAIR1-
A75	EDP_TX0_P	B75	DDIO_PAIR2+
A76	EDP_TX0_N	B76	DDIO_PAIR2-
A77	EDP_VDDEN	B77	N.C.
A78	N.C.	B78	N.C.
A79	N.C.	B79	EDP_BKLTEN
A80	GND (FIXED)	B80	GND (FIXED)
A81	EDP_TX3_P	B81	DDIO_PAIR3+
A82	EDP_TX3_N	B82	DDIO_PAIR3-
A83	EDP_AUXP	B83	EDP_BKLT_CTRL
A84	EDP_AUXN	B84	VCC_5V_SBY
A85	GPI3	B85	VCC_5V_SBY
A86	N.C.	B86	VCC_5V_SBY
A87	EDP_HPD	B87	VCC_5V_SBY
A88	PCIE0_CK_REF+	B88	BISO_DIS1#
A89	PCIE0_CK_REF-	B89	DDIO_HPD
A90	GND (FIXED)	B90	GND (FIXED)
A91	SPI_POWER	B91	N.C.
A92	SPI_MISO	B92	N.C.
A93	GPO0	B93	N.C.

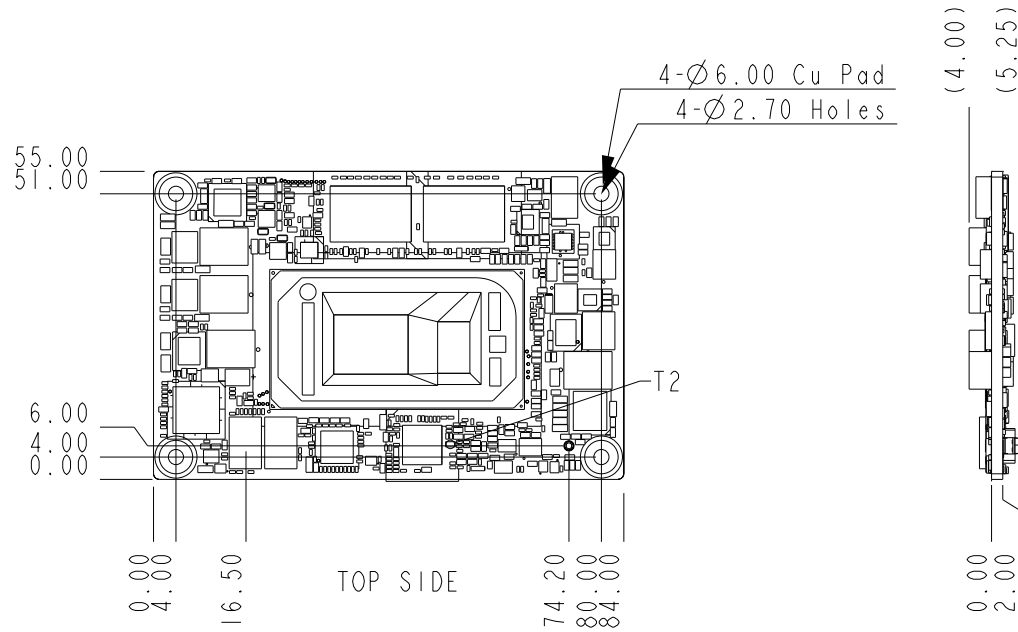
Pin #	Row A	Pin #	Row B
A94	SPI_CLK	B94	N.C.
A95	SPI_MOSI	B95	DDIO_DDC_AUX_SEL
A96	GND	B96	N.C.
A97	TYPE10# (Pull down 47k ohm to GND)	B97	SPI_CS#
A98	RS1_TX	B98	DDIO_AUX_DP
A99	RS1_RX	B99	DDIO_AUX_DN
A100	GND (FIXED)	B100	GND (FIXED)
A101	RS2_TX	B101	FAN_PWMOUT
A102	RS2_RX	B102	FAN_TACHIN
A103	LID#	B103	SLEEP#
A104	VCC_12V	B104	VCC_12V
A105	VCC_12V	B105	VCC_12V
A106	VCC_12V	B106	VCC_12V
A107	VCC_12V	B107	VCC_12V
A108	VCC_12V	B108	VCC_12V
A109	VCC_12V	B109	VCC_12V
A110	GND (FIXED)	B110	GND (FIXED)

Block Diagram

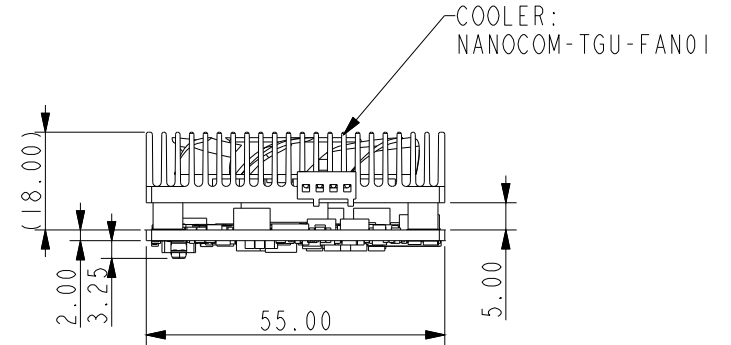


Board Dimension

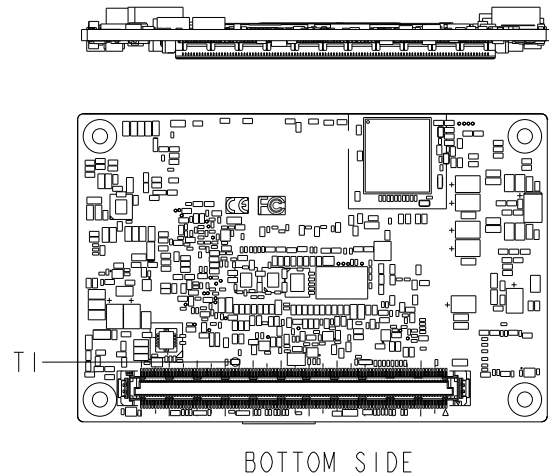
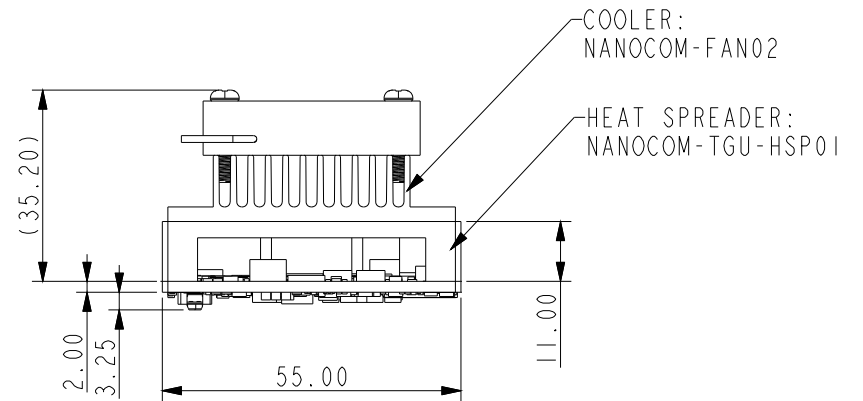
(Unit: mm)



WITH ONE-PIECE THERMAL SOLUTION



WITH STANDARD THERMAL SOLUTION
 (HEAT SPREADER + SEMI-COOLER)



(end)