

Rack Installaion

To mount this server into a 19-inch 4-post rack, you will need to purchase an optional slide-rail kit from Acrosser.

Required Tools

- 1x Phillips Screwdriver
- 1x 7mm 6-Point Hex Wrench

Slide-rail Kit Contents

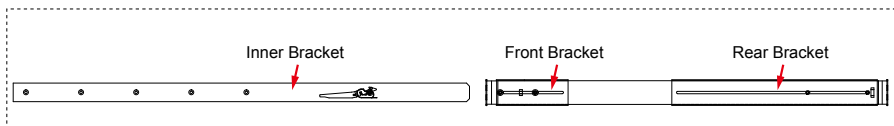
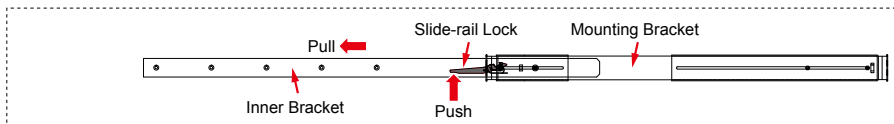
The slide-rail kit is an optional 19-inch 4-post rack-mount accessory consist of:

- 2x Slide Rail Assemblies. A slide rail assembly can be installed on either the right or left side of the rack.
- 1x Screw Pack

Note: The front-to-back rail spacing must be at least 671 mm (22.01 inches) and not more than 935.2 mm (30.68 inches) from the outside face of the front rail to the outside face of the back rail.

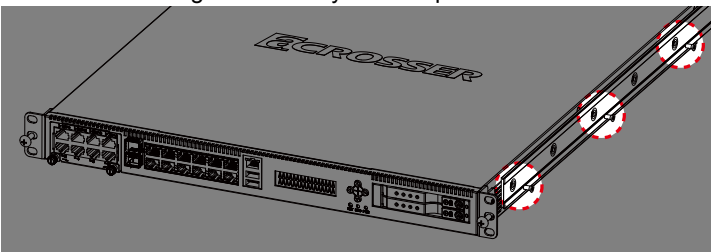
Installing the Server Into a Rack with Slide-rail Kits

Step 1: Pull out each inner bracket from the slide-rail kits until it locks in the extended position. Push the slide-rail lock to release the inner bracket from the mounting bracket. Do the same to the other bracket.



Step 2: Secure both left and right 1U mounting ears to the server's front panel chassis with your Phillips screwdriver.

Step 3: Secure both left and right inner brackets by three M4 or M5x5 screws to each of the server's left and right side with your Phillips screwdriver.



Step 4: Determine which rack hole numbers to use.

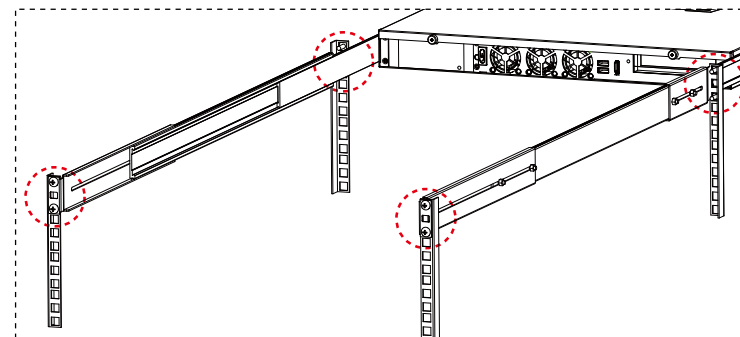
(a) If your rack has threaded mounting holes in the rack posts, determine whether the threads are metric or standard. Select the appropriate screws from the package included in the mounting kit.

(b) If your rack does not have threaded mounting holes, the mounting screws are secured with caged nuts.

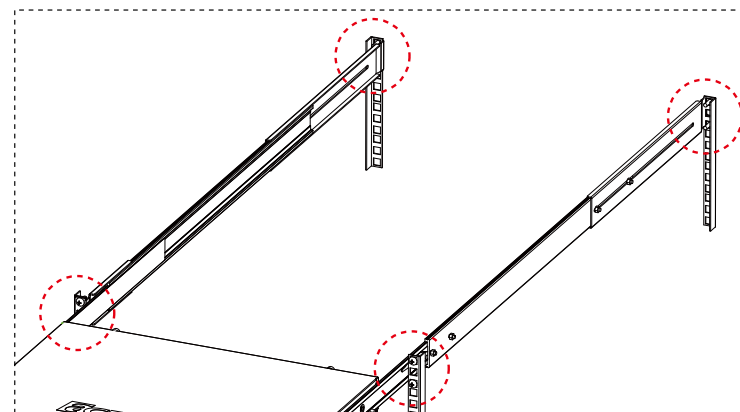
Step 5: Loosely attach the front slide-rail to the front right rack-post using two screws into the upper and lower holes. Do not tighten the screws yet.

Step 6: Adjust the length of the slide-rail by sliding the rear bracket flange to reach the outside edge of the rear rack-post. Loosely attach the rear bracket to the rear right rack-post with two screws.

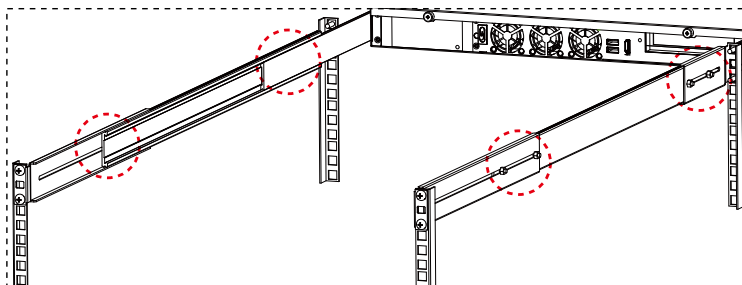
Step 7: Attach the second slide-rail to the left rack-post in a similar manner. Again, do not tighten the screws.



Step 8: Fully extend the front and rear brackets to where it reaches the rack-post. Now tighten the screws to lock the ends of the rails in place with your Phillips screwdriver.

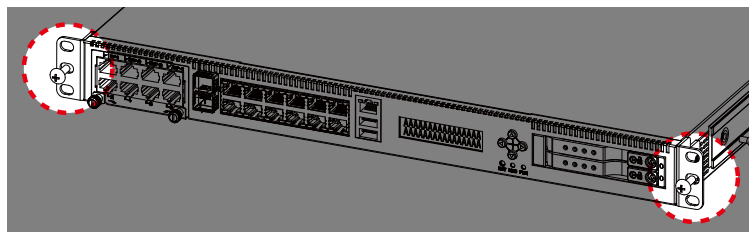


- Step 9: Tighten the four screws that fasten each of the front and rear brackets with your 6-point hex wrench.



- Step 10: Slide the chassis all the way into the rack until the chassis mounting ears are against the front posts.

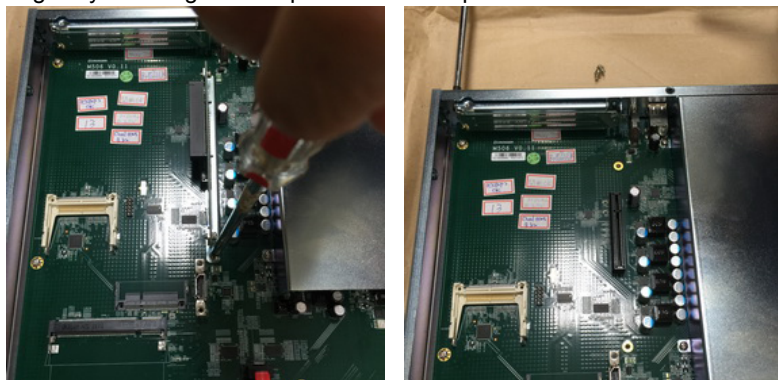
- Step 11: Tighten the chassis mounting ears to the rack posts each by using one screw into the middle hole.



Riser Card Installation

To install your riser card:

- Step 1: Remove the top cover. Unscrew the two screws that were originally securing the holder plate to the **PCIEXP2** slot. And then unscrew the two screws that were originally securing a cover plate to the rear panel.



- Step 2: Unscrew the cover plate shield.

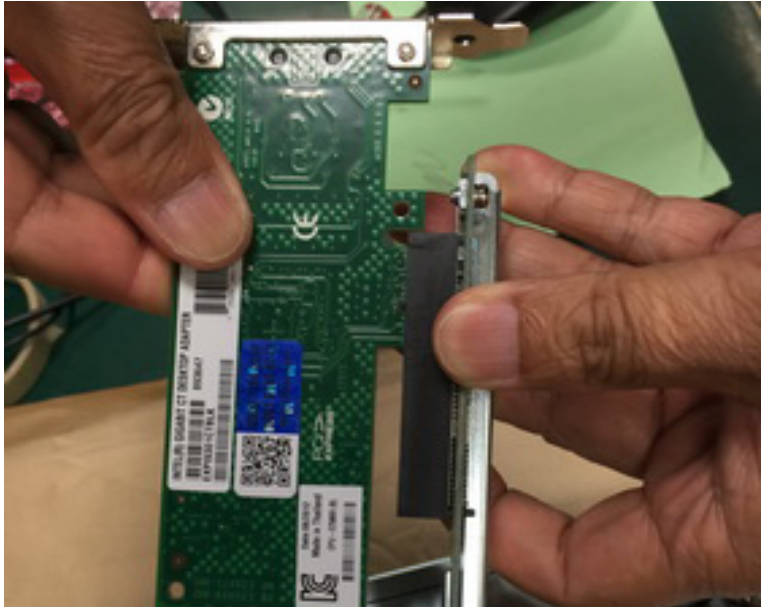


Note: Keep these screws safely on your table.

- Step 2: Secure your riser card with one screw to the cover plate.



Step 3: Insert your riser card into the holder plate.



Step 4: Firmly insert your riser card into the **PCIEXP2** slot on ANR-C236N1-K Series. Screw the holder plate with two screws to secure the riser card to the **PCIEXP2** slot.



Step 5: Screw the cover plate with two screws to secure the riser card to the real panel.



Step 6: Replace the top cover.

(end)