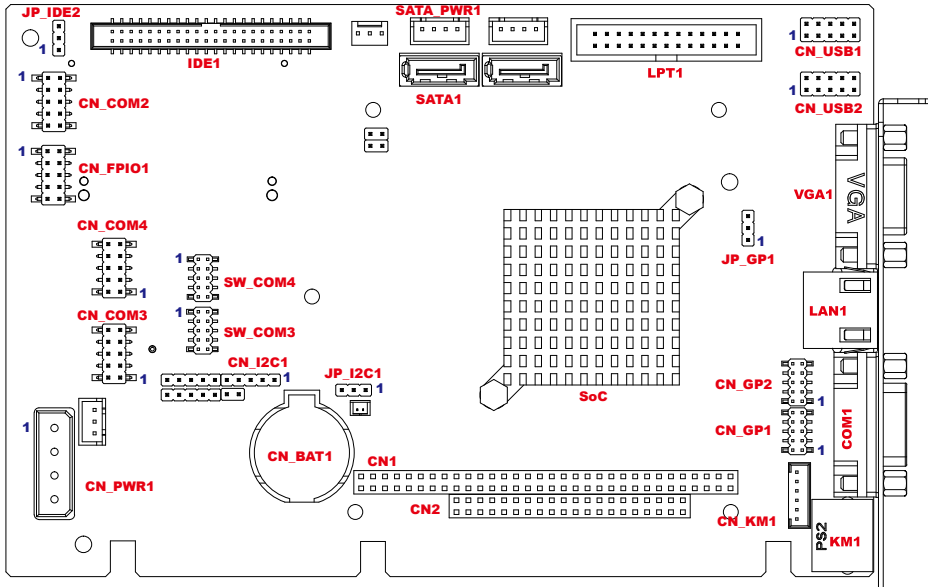
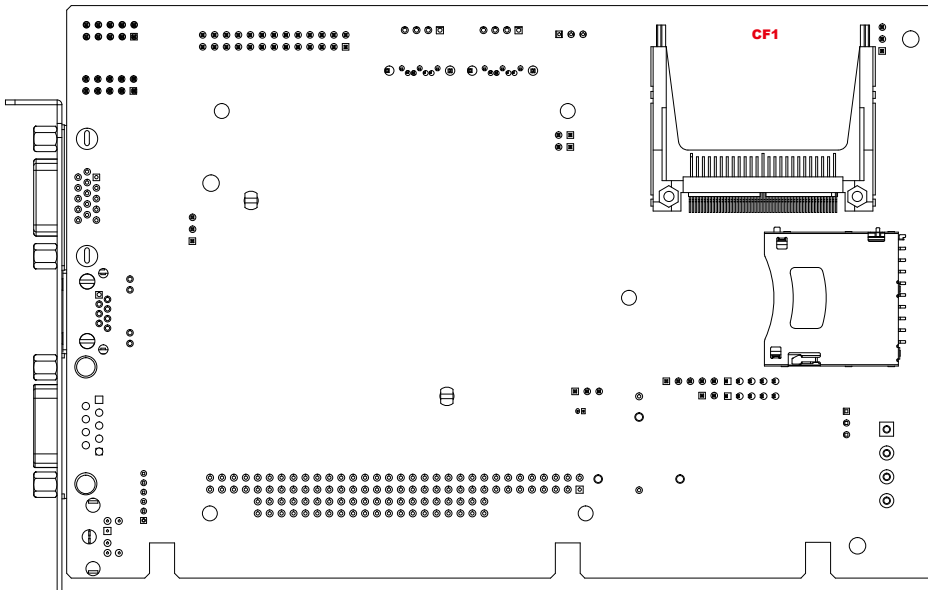


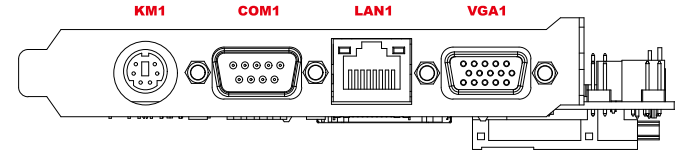
Top View



Bottom View



IO View



Connector and Jumper Pin Definition

CN_PWR1

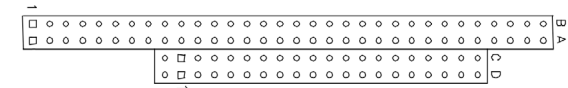
ATX Power Input

	Pin #	Signal
	1	+5V (4A)
	2	GND
	3	GND
4	+12V (1.2A)	

CN1

Standard PC/104 Module Connector

CN2



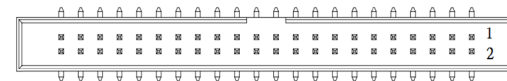
LPT1

Standard Parallel 26-pin Connector



IDE1

Standard IDE 44-pin Connector



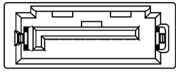
PS: Pin 41, 42: +5V/1.5A max

Note: The jumper selection of HDD, SSD or ODD should be "Master".

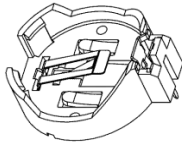
JP_IDE2

IDE1 Vcc Jumper Setting: (Pitch: 2.54mm)

	Short	Function
	1-2	+5V / 1.5A (default for HDD)
	2-3	+3.3V / 1.5A

SATA1 Standard SATA 7-pin Connector

SATA_PWR1 SATA Power Cable Connector (Pitch: 2.54mm)

	Pin #	Signal
	1	+12V
	2	GND
	3	+3.3V
4	+5V	

CN_BAT1 CR2032 Battery Holder

CN_KM1 KB/MS Cable Connector: (Pitch: 2mm)

	Pin #	Signal
	1	MS DAT
	2	KB DAT
	3	GND
	4	+5V
	5	MS CLK
6	KB CLK	

CN_USB1 USB 2.0 Cable Connector: (Pitch: 2.54mm)

	Pin #	Signal	Pin #	Signal
	1	+5V	2	+5V
	3	USB Port A -	4	USB Port B -
	5	USB Port A +	6	USB Port B +
	7	GND	8	GND
	9	NC	10	NC

CN_COM2 RS-232 Port Connector: (Pitch: 2.54mm)

	Pin #	Signal	Pin #	Signal
	1	DCD	2	DSR
	3	RxD	4	RTS
	5	TxD	6	CTS
	7	DTR	8	RI
	9	GND	10	NC

CN_COM3 RS-232/422/485 Port Multi-protocol Connector: (Pitch: 2.54mm)

Note: RTS is the TX enable signal of RS-485. RS-485 will have output only when RTS is Low.

RS-232 Mode (SW_COM3/4 must set 001)

	Pin #	Signal	Pin #	Signal
	1	DCD	2	DSR
	3	RxD	4	RTS
	5	TxD	6	CTS
	7	DTR	8	RI
	9	GND	10	NC

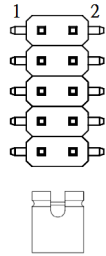
RS-422 Mode (SW_COM3/4 must set 000 or 100)

	Pin #	Signal	Pin #	Signal
	1	TX(B)	2	
	3	TX(A)	4	
	5	RX(A)	6	
	7	RX(B)	8	
	9	GND	10	

RS-485 Mode (SW_COM3/4 must set 010 or 110)

	Pin #	Signal	Pin #	Signal
	1	D- (B)	2	
	3	D+ (A)	4	
	5		6	
	7		8	
	9	GND	10	

**SW_COM3
SW_COM4**



CN_COM3 & CN_COM4 Jumper Setting (Pitch: 2mm)

Mode	Pin 9-10	Pin 7-8	Pin 5-6	Pin 3-4	Pin 1-2	Mode Description
000	Open	Open	Short	Short	Short	RS422 Full Duplex
001	Open	Open	Short	Short	Open	RS232 Pure
010	Open	Open	Short	Open	Short	RS485 Half Duplex (TXEN#)
100	Open	Open	Open	Short	Short	RS422 Full Duplex w/ termination
101	Open	Open	Open	Short	Open	Reserved
110	Open	Open	Open	Open	Short	RS485 Half Duplex w/ termination (TXEN#)
111	Open	Open	Open	Open	Open	Reserved

CN_I2C1

I2C Cable Connector (Pitch: 2.54mm)

	Pin #	Signal
	1	Vcc Setting by JP_I2C1
	2	DAT
	3	CLK
	4	NC
	5	GND

JP_I2C1

CN_I2C1 Vcc Jumper Setting: (Pitch: 2.54mm)

	Short	Function
	1-2	+3.3V / 1.5A (default)
	2-3	+5V / 1.5A

**CN_GP1
CN_GP2**

16bits GPIO Cable Connector (Pitch: 2mm)

	Pin #	Signal	Pin #	Signal
	1	GP00 / GP10	2	GP07 / GP17
	3	GP01 / GP11	4	GP06 / GP16
	5	GP02 / GP12	6	GP05 / GP15
	7	GP03 / GP13	8	GP04 / GP14
	9	GND	10	Vcc setting by JP_GP1

Note 1: w/o protection & isolation.
Note 2: 3.3V w/ 5V I/O tolerant.

JP_GP1

CN_GP1 & CN_GP2 Vcc Jumper Setting: (Pitch: 2.54mm)

	Short	Function
	1-2	+3.3V / 1.5A (default)
	2-3	+5V / 1.5A

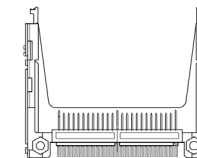
CN_FPIO1

Power/HDD LED & Reset Button Cable Connector (Pitch: 2.54mm)

	Pin #	Signal	Pin #	Signal
	1	HDD LED+	2	Power LED+
	3	HDD LED-	4	Power LED-
	5	Reset SW+	6	NC
	7	Reset SW-	8	NC
	9	NC	10	NC

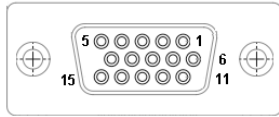
CF1

Standard CF Memory Card Connector



VGA1

Standard VGA (D-Sub15 / Female) Connector



LAN1

Standard IEEE802.3 & RJ45 Connector

	LED		10Mbps	100Mbps
	LED1	Link	Green	Green
	LED2	Active	Yellow Blinking	Yellow Blinking

COM1

Standard RS232/DTE (D-Sub9 / Male) Connector

	Pin #	Signal	Pin #	Signal
	1	DCD	2	RX
	3	TX	4	DTR
	5	GND	6	DSR
	7	RTS	8	CTS
	9	RI		

KM1

PS/2 Keyboard & Mouse Mixed Connector

	Pin #	Signal	Pin #	Signal
	1	KB_DAT	2	MS_DAT
	3	GND	5	+5V
	6	KB_CLK	8	MS_CLK

Board Dimension

(Unit: mm)

