

AND-DNV3N1-xCR Series

Networking Micro Box

- Intel® Denverton® SoC
- 8 or 4 GbE Copper (1-pair bypass)
- 2 SFP+



User Manual

Acrosser Technology Co., Ltd.
www.acrosser.com

Disclaimer

For the purpose of improving reliability, design and function, the information in this document is subject to change without prior notice and does not represent a commitment on the part of Acrosser Technology Co., Ltd.

In no event will Acrosser Technology Co., Ltd. be liable for direct, indirect, special, incidental, or consequential damages arising out of the use or inability to use the product or documentation, even if advised of the possibility of such damages.

Copyright

This document contains proprietary information protected by copyright. All rights are reserved. No part of this manual may be reproduced by any mechanical, electronic, or other means in any form without prior written permission of Acrosser Technology Co., Ltd.

Trademarks

The product names appear in this manual are for identification purpose only. The trademarks and product names or brand names appear in this manual are the property of their respective owners.

Purpose

This document is intended to provide the information about the features and use of the product.

Audience

The intended audiences are technical personnel, not for general audiences.

Ver: 010-001

Date: Mar. 25, 2021

To read this User Manual on your smart phone, you will have to install an APP that can read PDF file format first. Please find the APP you prefer from the APP Market.

Table of Contents

1. System Introduction.....	5
1.1. Model Description.....	5
1.2. Specifications	6
1.3. Package Contents	8
1.4. System Dissection	9
1.4.1. Dimensions	9
1.4.2. Front I/O Panel.....	10
1.4.3. Rear I/O Panel	11
2. Components Assembly.....	13
2.1. SIM Card Installation	13
2.2. Open up Top Cover	15
2.3. Memory Module Installation.....	17
2.4. 4G & WiFi Module Installation	19
2.5. Hard Disk & Top Cover Installation.....	21
3. BIOS Settings.....	23
3.1. Main Setup	23
3.2. Advanced Setup	25
3.2.1. Advanced Setup: Trusted Computing	25
3.2.2. Advanced Setup: OnBoard Bypass Controller	26
3.2.3. Advanced Setup: W83627DHG Super IO Configuration	27
3.2.4. Advanced Setup: W83627DHG HW Monitor	29
3.2.5. Advanced Setup: Serial Port Console Redirection.....	30
3.2.6. Advanced Setup: Network Stack Configuration	32
3.2.7. Advanced Setup: CSM Configuration	33
3.2.8. Advanced Setup: USB Configuration	34
3.3. IntelRCSetup	35
3.3.1. IntelRCSetup: Processor Configuration	35
3.3.2. IntelRCSetup: South Bridge Chipset Configuration	36
3.3.3. IntelRCSetup: SATA Port.....	37
3.3.4. IntelRCSetup: M.2 SATA Port.....	38
3.4. Security Setup	38
3.5. Boot Setup.....	39
3.6. Save & Exit Setup.....	40
4. Software Installation and Programming Guide	41
4.1. Introduction.....	41
4.1.1. Environment.....	41
4.1.2. GPIO	41

4.1.3. Watchdog	41
4.1.4. LAN Bypass Subsystem.....	41
4.2. File Descriptions.....	42
4.2.1. GPIO/Watchdog/LAN Bypass Subsystem Module.....	42
4.3. API List and Descriptions	42
4.3.1. GPIO	42
4.3.2. Watchdog	43
4.3.3. LAN Bypass Subsystem.....	43
4.3.4. Notes.....	45
5. FAQ	46
Q 1. Where is the serial number located on my system?.....	46
Q 2. How to active the second SIM card SIERRA EM7455/EM7430 ?	46
Q 3. How to active the second SIM card Quectel EM06-A/EM06-E 4G ?.....	46

1. System Introduction

AND-DNV3N1-xCR is an entry level networking appliance. In a small box, this appliance equip a powerful Intel Atom C3000 SoC.

This SoC supports multi-core CPU computing and support QAT, USB 3.0 and LAN controller which can be 10GbE capable.

AND-DNV3N1-xCR is an ideal networking appliance for small office. It can support up to 10 LAN ports with both copper and fiber media. Supports two USB 3.0 ports, optional WiFi 5 and 4G wireless connection. AND-DNV3N1-xCR consumes only a few power. In this small yet powerful box, the thermal dissipation is really well designed so no fan is needed. This fanless design not only made a quiet office be possible, but also assure the non-stop LAN connection for the business environment. For that no fan means no moving part which is the most vulnerable part in the electronic device.

1.1. Model Description

Model Name	Description
AND-DNV3N1-8CR	Intel Atom C3758R (8-core) SoC, 8x GbE Copper (1-pair bypass), 2x SFP+, 2x USB 3.0, 1x 2.5" SATAIII, 1x mPCIe socket (for WLAN) and 1x M.2B (for 2x 4G LTE or 2242 SSD), and 1x 12V DC-In.
AND-DNV3N1-4CR	Intel Atom C3558R (4-core) SoC, 8x GbE Copper (1-pair bypass), 2x SFP+, 2x USB 3.0, 1x 2.5" SATAIII, 1x mPCIe socket (for WLAN) and 1x M.2B (for 2x 4G LTE or 2242 SSD), and 1x 12V DC-In.
AND-DNV3N1-2CR	Intel Atom C3338R (2-core) SoC, 4x GbE Copper (1-pair bypass), 2x USB 2.0, 1x 2.5" SATAIII, 1x M.2B (for 4G LTE), 1x DC-In.

1.2. Specifications

(Specifications are subject to change without notice.)

General

Thermal Solution	<ul style="list-style-type: none">Fanless Design		
CPU	<ul style="list-style-type: none">Intel® Denverton® C3558 4 cores, 2.2GHzIntel® Denverton® C3308 2 cores, 1.6GHz		
Memory	<ul style="list-style-type: none">1x SO-DIMM DDR4		
BIOS	<ul style="list-style-type: none">Support Console Re-directionSupport Bypass Setting		
	Status	Normal	Bypass
	SYS (ON)	V	
	SYS (OFF)		V
	WDT (Timeout)		V
	PWR (Lost)	Remained prior status	
	<ul style="list-style-type: none">Support PXE boot from all RJ-45 Coppers		

Network Interface

Ethernet (on-board)	<ul style="list-style-type: none"> For C3308: 4x Copper, Intel i211, LAN [1: 4] For C3538: 8x Copper or 4x Copper + 2x 10G Fiber Intel i211, LAN [1: 8] Copper or Intel i211, LAN [1:4] & SoC embedded SFI, SFP+[1:2]
LAN bypass (1-pair)	<ul style="list-style-type: none"> LAN bypass by LAN[1:2]

Storage

HDD Bay	<ul style="list-style-type: none"> 1x 2.5" Internal HDD Bay
M.2 NVME	<ul style="list-style-type: none"> 1x M.2B socket for 2242 SSD (for C3558)

I/O

Front Panel	<ul style="list-style-type: none"> 8x Ethernet Link/Act LED 8x Ethernet 1000M LED 2x SFP+ Link LED 2x SFP+ Act LED 1x Sys Power LED (12V) 1x Storage LED 1x LAN Bypass LED
--------------------	---

Rear Panel	<ul style="list-style-type: none"> • 1x Reset button • 2x USB 3.0 • 1x RJ45 Console port • 2x SFP+(For C3558) • 8x or 4x GbE LAN (Copper) • 5x SMA for WLAN & WWAN (IEEE 802.11 a/b/g/n/ac & 4G LTE) • 1x DC-in connector (12V)
Internal I/O	<ul style="list-style-type: none"> • 1x mini-PCIe connector (for Wi-Fi IEEE 802.11 a/b/g/n/ac 3T3R module) • 1x M.2B connector (w USB 2.0+3.0 signal & SATA3, for 4G module or 2242 SSD) with 2 SIM socket • 1x SATA3+power connectors • GPIO pin header

Other Features

Watchdog Timer	<ul style="list-style-type: none"> • Software programmable 0~255 Seconds, 0=disable timer.
Battery	<ul style="list-style-type: none"> • Lithium Battery, 3V 220mAH (CR2032), for RTC
Hardware Monitoring	<ul style="list-style-type: none"> • CPU Voltage • CPU Temperature • System Temperature
Security & Mgmt.	<ul style="list-style-type: none"> • On-board TPM 2.0 (Not for AND-DNV3N1-4C, AND-DNV3N1-4C1)

Power Requirement

Power Adapter	<ul style="list-style-type: none"> • 12VDC, 40W Adapter
----------------------	--

Software

OS Support	<ul style="list-style-type: none"> • Linux Kernel 4.4 & above, (64-bit)
-------------------	--

Mechanical & Environment

Dimension	<ul style="list-style-type: none"> • 250(L) x 165(W) x 44(H) mm
Operating Temperature	<ul style="list-style-type: none"> • 0 ~ 40°C (32 ~ 104°F)
Storage Temperature	<ul style="list-style-type: none"> • -20 ~ 80°C (-4 ~ 176°F)
Relative Humidity	<ul style="list-style-type: none"> • 0 to 90% @40°C, non-condensing

EMC & Safety

Certification	• CE, FCC Class A, RoHS 2, cULus
Vibration Test	• IEC 60068-2-64, 5~500Hz, 3GRMS
Drop Test	• ISTA-2A 2006

1.3. Package Contents

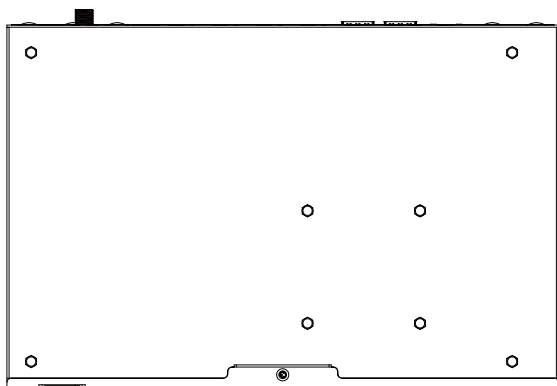
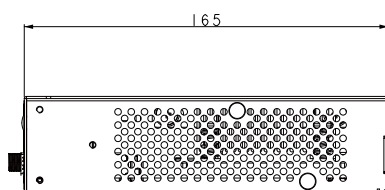
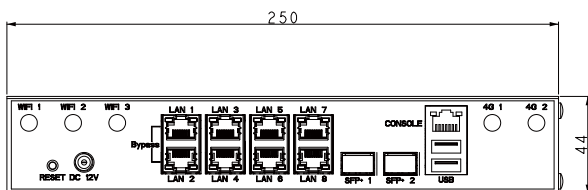
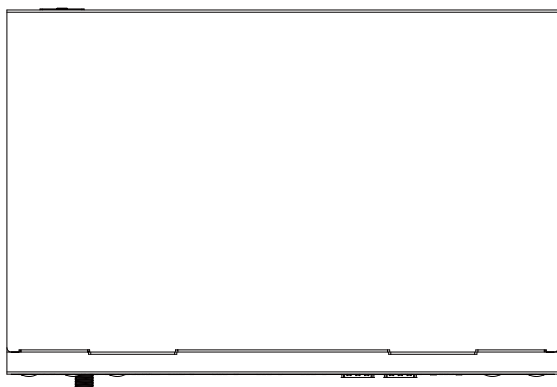
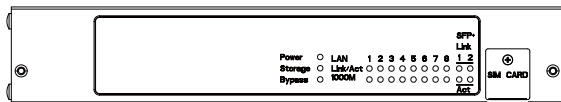
Check if the following items are included in the package.

	Item	Q'ty
<input type="checkbox"/>	AND-DNV3N1-xCR System	1
<input type="checkbox"/>	Power Adapter (12V)	1
<input type="checkbox"/>	Power Cord	1
<input type="checkbox"/>	Screw Pack	1

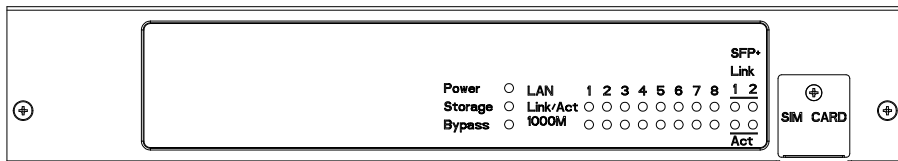
1.4. System Dissection

1.4.1. Dimensions

(Unit: mm)



1.4.2. Front I/O Panel



- Power**

System Power LED

- Storage**

Storage Active LED

- Bypass**

LAN Bypass LED

- LAN 1~8**

IEEE802.3 Status LED

LED	Light	Display
G	Green	Link with Activity
Y	Yellow	1000Mbps

- SFP+ 1~2**

SFP+ 1~2 Link/Active LED

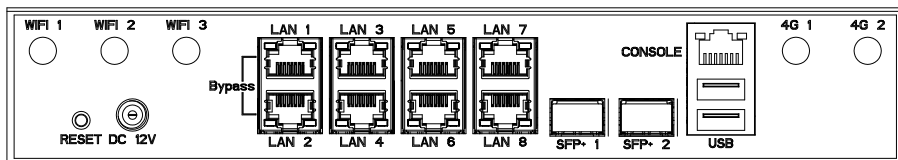
LED	Light	Display
G	Green	LINK LED
Y	Yellow	ACTIVE LED

- SIM CARD**

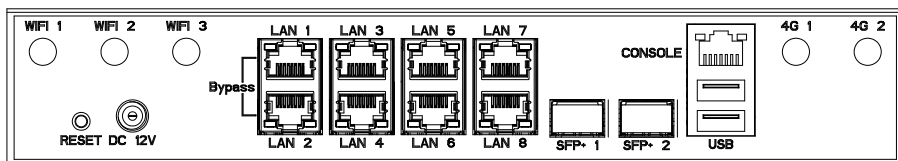
Standard SIM Card Socket

1.4.3. Rear I/O Panel

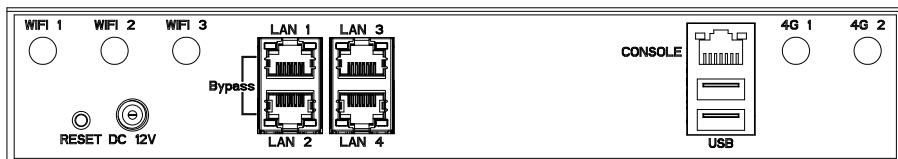
AND-DNV3N1-8CR



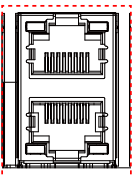
AND-DNV3N1-4CR



AND-DNV3N1-2CR



- **WIFI 1~3, 4G 1~2**
SMA Antenna Hole. Reserved for optional Wi-Fi / BT, 4G LTE antenna.
- **RESET**
Reset Button
- **DC 12V**
DC12V Power Input
- **LAN1 ~ LAN8**
Standard IEEE802.3 & RJ45 connector

	LED	Light	Status
	Left	Green (Blink)	Link with Activity
	Right	Off	10Mbps
		Yellow	100Mbps
		Green	1000Mbps

- SFP1 ~ SFP2**

Standard SFP+ Connector for 10G LAN

- Console**

Console Port (RJ45)

Pin #	Signal	Pin #	Signal
1	RTS	5	GND
2	DTR	6	RxD
3	TxD	7	DSR
4	GND	8	CTS

- USB**

Standard USB Port

2. Components Assembly

Please follow the instruction to install the inner modules.

2.1. SIM Card Installation

Step 1: Remove the screw on the SIM Card cover plate.



Step 2: Take down the SIM Card cover plate.



Step 3: Insert the SIM card.



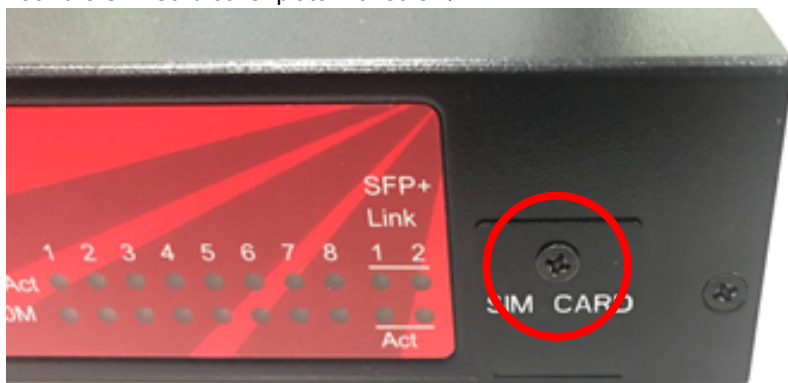
- Step 4: Push the SIM card into the socket until it docks in locked position.



- Step 5: Put the the SIM Card cover plate back.



- Step 6: Lock the SIM Card cover plate with screw.



2.2. Open up Top Cover

Step 1: Remove the screw that lock the bottom cover.



Step 2: Remove the screws that lock at the front side.



Step 3: Push forward the top cover to open it.



Step 4: Opem up the top cover.



2.3. Memory Module Installation

Step 1: Insert the memory module into the slot.



Step 2: Push the module down into the slot until it docks in locked position.

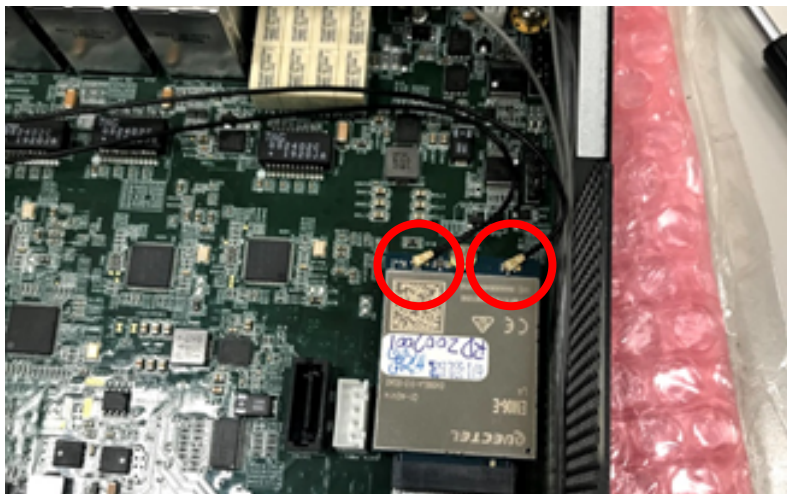


2.4. 4G & WiFi Module Installation

Step 1: Insert the 4G module into socket and lock with screw.



Step 2: Connect with RF Cables.



Step 3: Insert the WiFi module into socket and lock with screw.



Step 4: Connect with RF Cables.



Step 5: Insert antennas according to the panel allocation.
 4G 1, 4G 2 attach with 4G LTE antenna.
 WiFi 1, WiFi 2, and WiFi 3 attach with WiFi antenna.



2.5. Hard Disk & Top Cover Installation

Step 1: Install hard disk with screws through the cushion pad onto the disk bracket.



Step 2: Connect with SATA and POWER cables.



Step 3: Take care the cables not to tangle with the heatsink.



- Step 4: Use cable tie to bundle SATA cable and power cable.



- Step 5: Close the top cover.
Push the top cover inward until it docks into the slot.



- Step 6: Lock the chassis with screws.



3. BIOS Settings

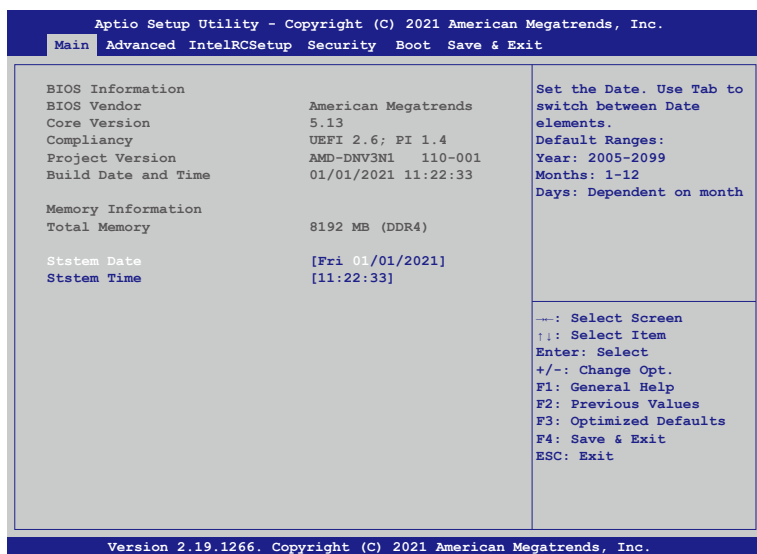
This chapter describes the BIOS menu displays and explains how to perform common tasks needed to get the system up and running. It also gives detailed explanation of the elements found in each of the BIOS menus. The following topics are covered:

- Main Setup
- Advanced Setup
- IntelRCSetup Setup
- Security Setup
- Boot Setup
- Save & Exit Setup

Once you enter the Award BIOS™ CMOS Setup Utility, the Main Menu will appear on the screen. Use the arrow keys to highlight the item and then use the <Pg Up> <Pg Dn> keys to select the value you want in each item.

3.1. Main Setup

The BIOS setup main menu includes some options. Use the [Up/Down] arrow key to highlight the option, and then press the <Enter> key to select the item and configure the functions.



Note: Listed at the bottom of the menu are the control keys. If you need any help with the item fields, you can press <F1> key, and it will display the relevant information.

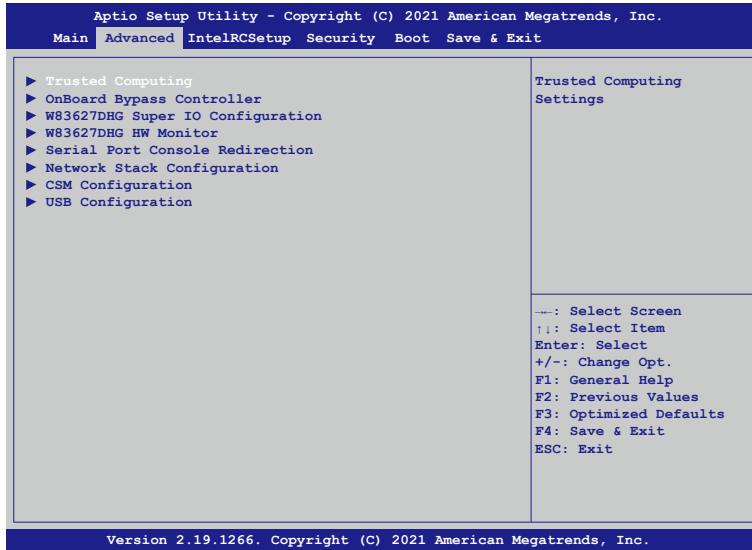
- **Total Memory**

This item displays the total size of memory available in the system.

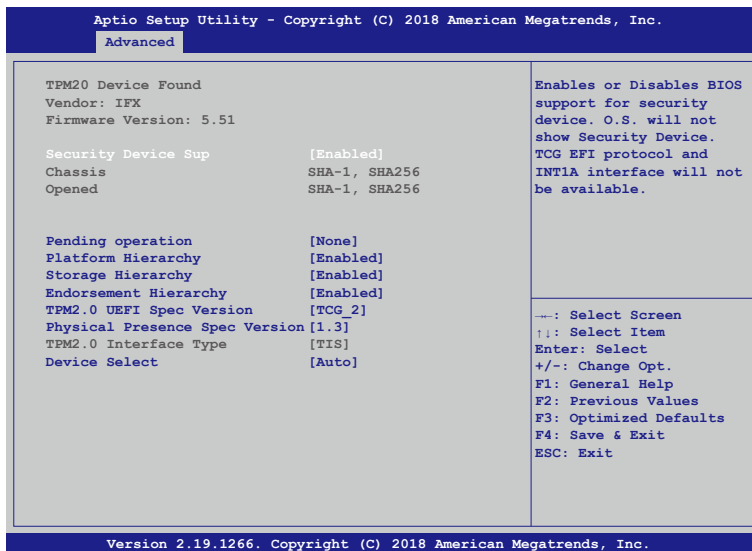
- **System Date/System Time**

Use this option to change the system date and time. Highlight System Date or System Time using the arrow keys. Enter new values using the keyboard. Press the key or the arrow keys to move between fields. The date must be entered in MM/DD/YYYY format. The time is entered in HH:MM:SS format.

3.2. Advanced Setup



3.2.1. Advanced Setup: Trusted Computing



- Security Device Support**
 Enables or Disables BIOS support for security device. O.S. will not show Security Device. TCG EFI protocol and INT1A interface will not be available.

- **Pending operation**
Schedule an Operation for the Security Device. NOTE: Your Computer will reboot during restart in order to change state of Security Device.
- **Platform Hierarchy**
Enable or Disable Platform Hierarchy.
- **Storage Hierarchy**
Enable or Disable Storage Hierarchy.
- **Endorsement Hierarchy**
Enable or Disable Endorsement Hierarchy.
- **TPM2.0 UEFI Spec Version**
Select the TCG2 Spec Version Support,
TCG_1_2 : the Compatible mode for Win8/Win10.
TCG_2 : Support new TCG2 protocol and event.
- **Physical Presence Spec Version**
Select to Tell O.S. to support PPI Spec Version 1.2 or 1.3. Note some HCK tests might not support 1.3.
- **Device Select**
TPM 1.2 will restrict support to TPM 1.2 device, TPM 2.0 will restrict support to TPM 2.0 devices, Auto will support both with the default set to TPM 2.0 devices if not found, TPM 1.2 device will be enumerated.

3.2.2. Advanced Setup: OnBoard Bypass Controller

Aptio Setup Utility - Copyright (C) 2021 American Megatrends, Inc.		
Advanced		
Model Name	DNV3N1	Set System On Bypass State
Firmware Version	100-001	
Pair0 System On	[Normal]	
Pair0 System Off	[Bypass]	
Pair0 WDT Timeout	[Bypass]	
		--: Select Screen ++: Select Item Enter: Select +/-: Change Opt. F1: General Help F2: Previous Values F3: Optimized Defaults F4: Save & Exit ESC: Exit
Version 2.19.1266. Copyright (C) 2021 American Megatrends, Inc.		

- **Pair0 System On**

Each Pair Lan[a] and Lan[b] Bypass State Setting, System On /System off /WDT timeout State.

[Normal] Lan[a] and Lan[b] work on normal mode.

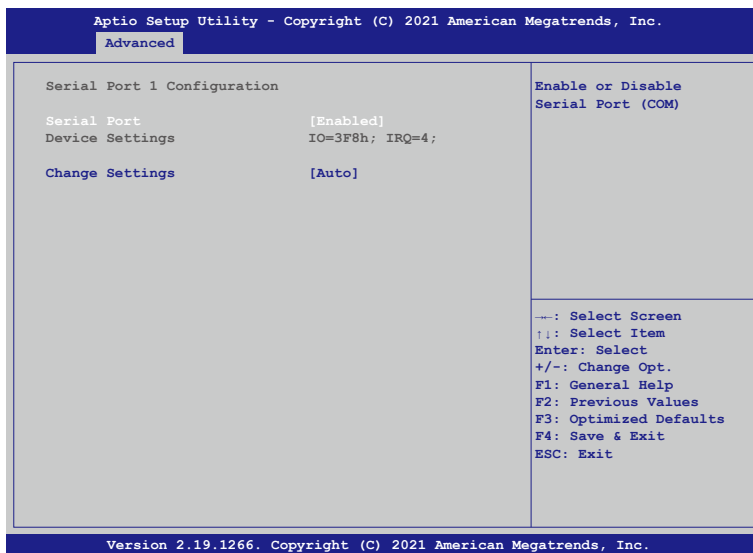
[Bypass] Lan[a] data will bypass to Lan[b].

3.2.3. Advanced Setup: W83627DHG Super IO Configuration



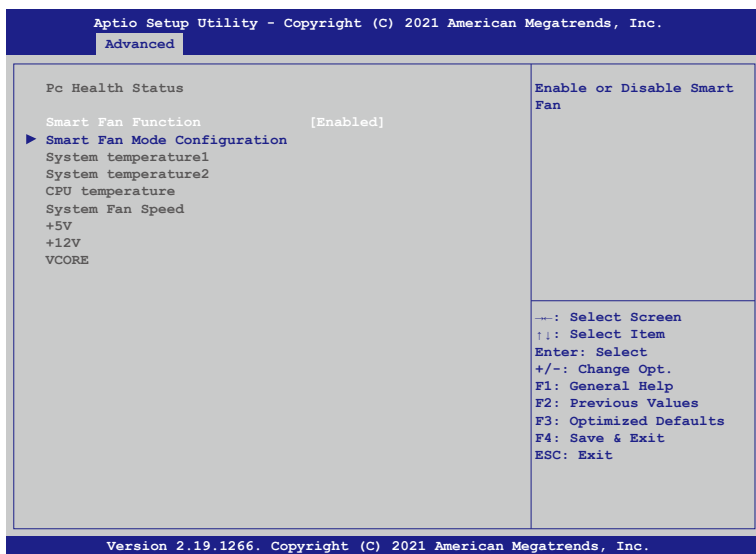
- **Serial Port 1 Configuration**

Set Parameters of Serial Port 1 (COMA).

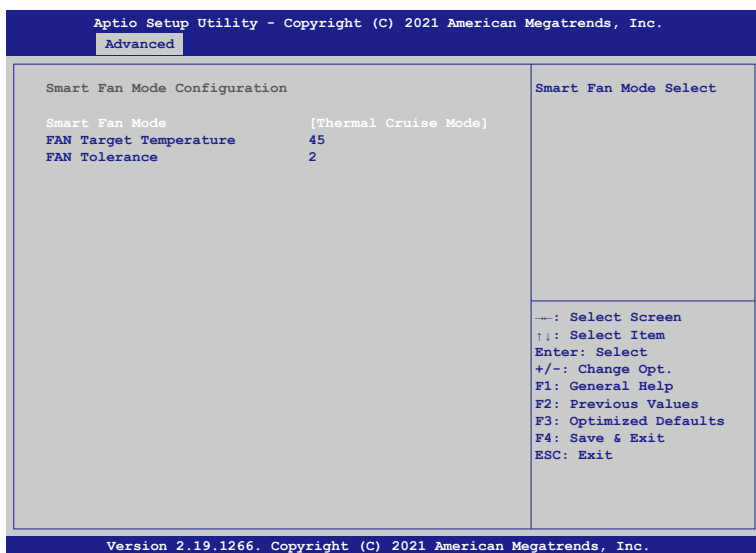


- **Serial Port**
Select Enabled to enable the onboard serial port.
- **Change Settings**
This option specifies the base I/O port address and the interrupt Request address of Serial Port.
Select [Auto] to let the BIOS automatically assign the base I/O and IRQ address.

3.2.4. Advanced Setup: W83627DHG HW Monitor



- **Smart Fan Mode Configuration**
Enable or Disable Smart Fan.



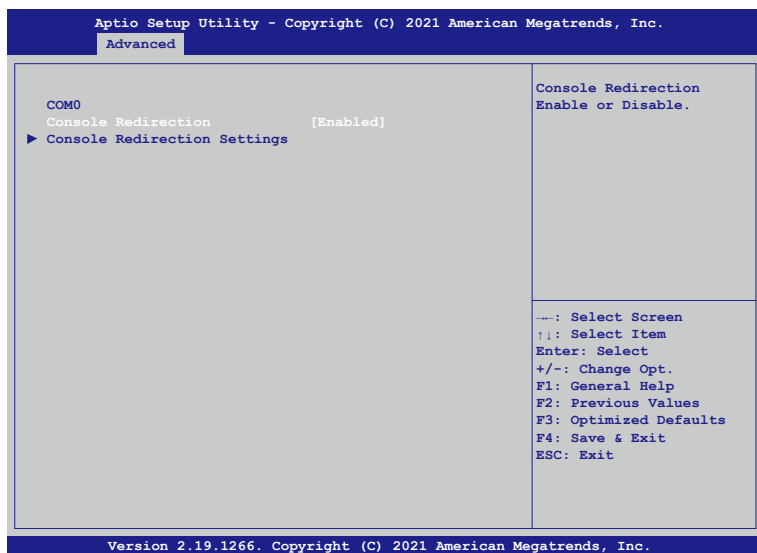
- **Smart Fan Mode**
[Thermal Cruise Mode] : You can adjust FAN Target Temperatur and FAN Tolerance manually. If CPU temp is lower than target temp-tolerance, the fan will run at low fan

speed. If CPU temp is higher than target temp+tolerance, the fan will run at full fan speed.

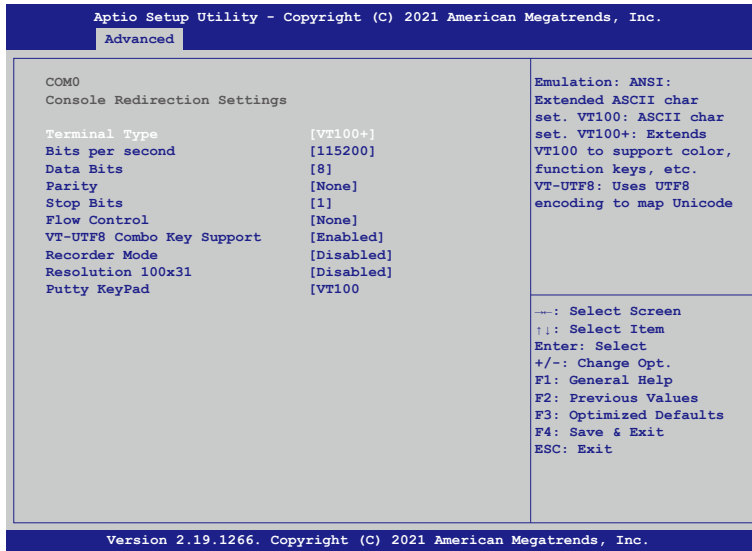
[Manual Mode] : You can set fixed fan speed.

- **FAN Target Temperature**
Input a target temperature between 0 ~ 127°C.
- **FAN Tolerance**
Input a target temperature tolerance.

3.2.5. Advanced Setup: Serial Port Console Redirection



- **Console Redirection**
Use this option to enable or disable Console Redirection. If this item is set to Enabled, you can select a COM Port to be used for Console Redirection.



- **Terminal Type**
Use this item to select the preferred terminal emulation type for out-of-band management.
- **Bits per second**
Use this item to select the serial port transmission speed. The speed used in the hostcomputer and the client computer must be the same. Long or noisy lines may require lowertransmission speed. he options include [9600], [19200], [57600] and [115200].
- **Data Bits**
Use this item to set the data transmission size. he options include [7] and [8] (Bits).
- **Parity**
Use this item to select the parity bit. he options include [None], [Even], [Odd], [Mark] and [Space].
- **Stop Bits**
The item indicates the end of a serial data packet. he standard setting is [1] Stop Bit. Select [2] Stop Bits for slower devices.
- **Flow Control**
Use this item to set the f low control to prevent data loss from buffer overf low. Whensending data, if the receiving bufers are full, a “stop” signal can be sent to stop the datalow. Once the bufers are empty, a “start” signal can be sent to restart the low. Hardwarelow uses two wires to send start/stop signals. he options include [None] and [HardwareRTS/CTS].

- **VT-UTF8 Combo Key Support**

Use this item to enable or disable the VT-UTF8 Combo Key Support for ANSI/VT100 terminals.

- **Recorder Mode**

Use this item to enable or disable Recorder Mode to capture terminal data and send it astext messages.

- **Resolution 100x31**

Use this item to enable or disable extended terminal resolution support.

- **Putty KeyPad**

Use this item to select Function Key and Keypad on Putty.

3.2.6. Advanced Setup: Network Stack Configuration

Aptio Setup Utility - Copyright (C) 2021 American Megatrends, Inc.		
Advanced		
Network Stack	[Enabled]	Enable/Disable UEFI Network Stack
Ipv4 PXE Support	[Disabled]	
Ipv4 HTTP Support	[Disabled]	
Ipv6 PXE Support	[Disabled]	
Ipv6 HTTP Support	[Disabled]	
IP6 Configuration Pol	[Automatic]	
PXE boot wait time	0	
Media detect count	1	
		--: Select Screen : Select Item Enter: Select +/-: Change Opt. F1: General Help F2: Previous Values F3: Optimized Defaults F4: Save & Exit ESC: Exit
Version 2.19.1266. Copyright (C) 2021 American Megatrends, Inc.		

- **Ipv4 PXE Support**

Enable or disable the Ipv4 PXE support.

- **Ipv4 HTTP Support**

Enable or disable the Ipv4 HTTP support.

- **Ipv6 PXE Support**

Enable or disable the Ipv6 PXE support.

- **Ipv6 HTTP Support**

Enable or disable the Ipv6 HTTP support.

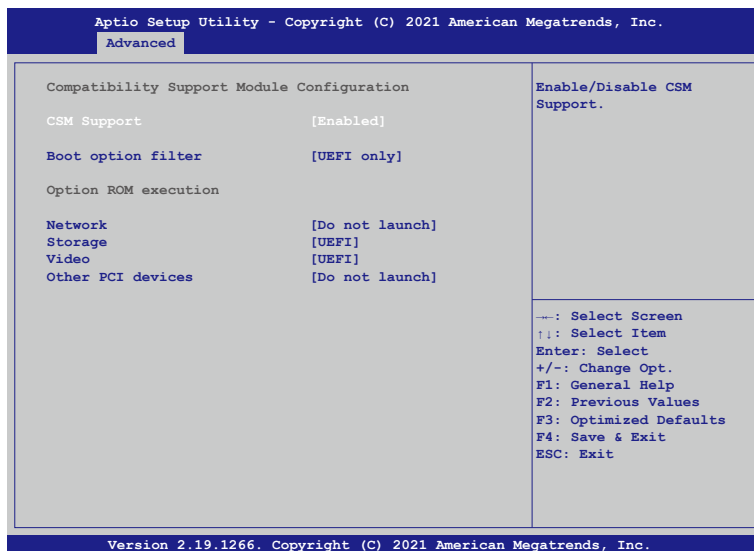
- **PXE boot wait time**

Click ESC key to cancel the PXE boot wait time.

- **Media detect count**

Set up the media detecting wait time by seconds.

3.2.7. Advanced Setup: CSM Configuration



- **CSM Support**

Use this feature to set the compatibility Option ROM. The options are Enabled, and Disabled. Disabled is the default option.

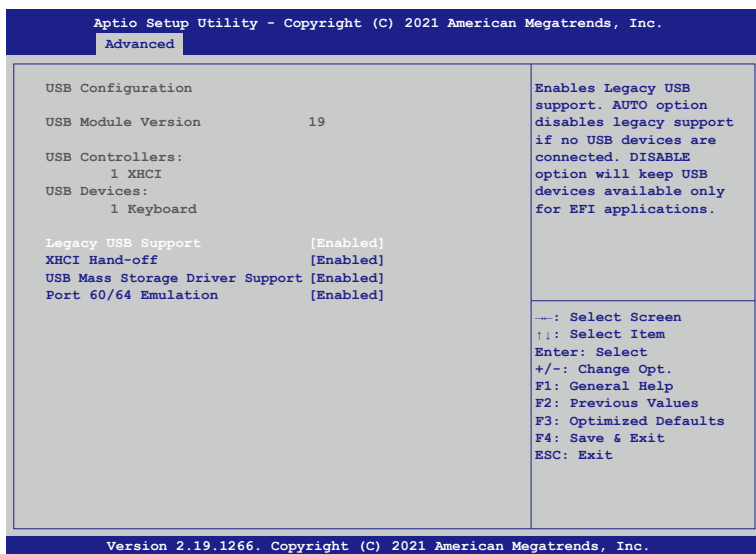
- **Boot option filter**

Use this item to control the Legacy/UEFI memory sequence. Options are: [UEFI and Legacy], [Legacy only], [UEFI only].

- **Network**

This item provides control of the operation UEFI and regular PXE/Storage/Video, randomly read memory (OpROM). Options are: [UEFI], [Legacy], [Do not Launch].

3.2.8. Advanced Setup: USB Configuration



- **Legacy USB Support**

Select Enabled to support onboard legacy USB devices. Select Auto to disable legacy support if there are no legacy USB devices present. Select Disable to have all USB devices available for EFI applications only.

- **XHCI Hand-off**

This is a work-around solution for operating systems that do not support XHCI (Extensible Host Controller Interface) hand-off. The XHCI ownership change should be claimed by the XHCI driver.

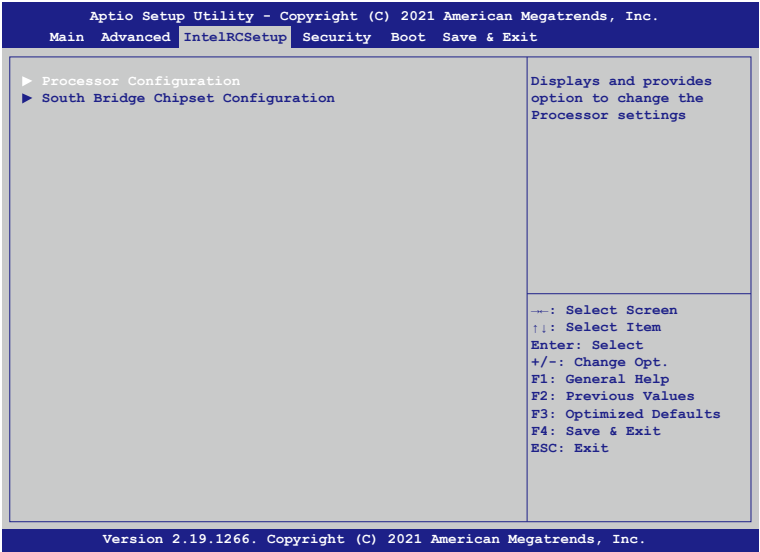
- **USB Mass Storage Driv**

Select Enabled for USB Mass Storage Driver support.

- **Port 60/64 Emulation**

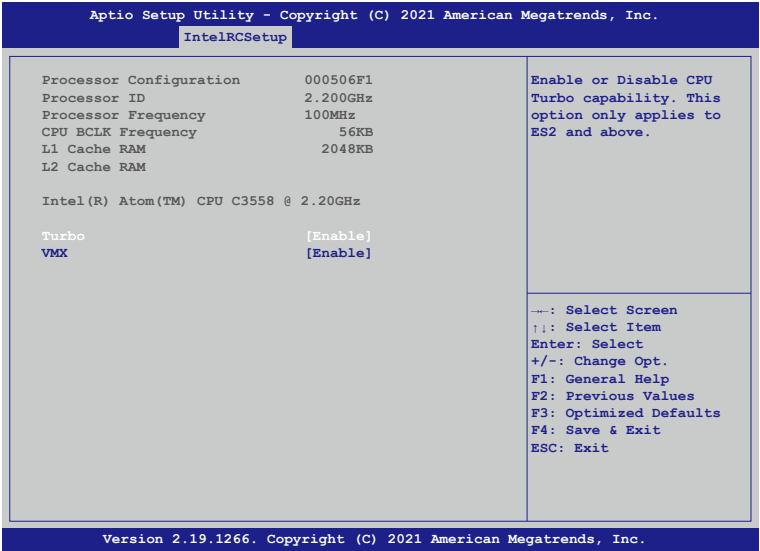
Select Enabled for I/O port 60h/64h emulation support, which in turn, will provide complete legacy USB keyboard support for the operating systems that do not support legacy USB devices.

3.3. IntelRCSetup



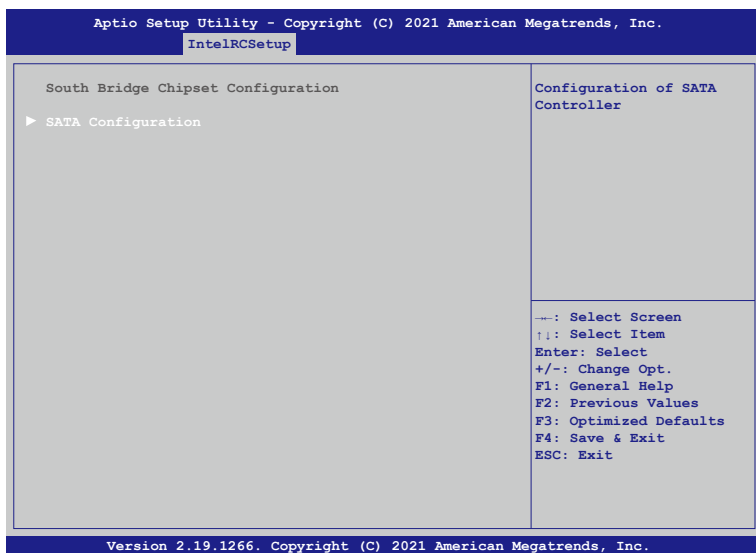
- **Processor Configuration**
Displays and provides option to change the Processor Settings.

3.3.1. IntelRCSetup: Processor Configuration

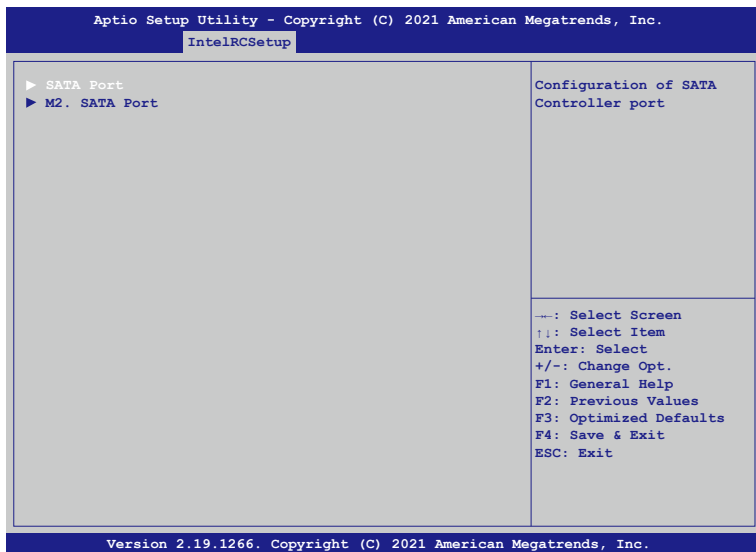


- **Turbo**
This feature allows processor cores to run faster than marked frequency in specific conditions.
- **VMX**
Enable or Disable Intel Virtual Machine Extensions (VMX) for IA-32 processors that support Intel® Vanderpool Technology.

3.3.2. IntelRCSetup: South Bridge Chipset Configuration

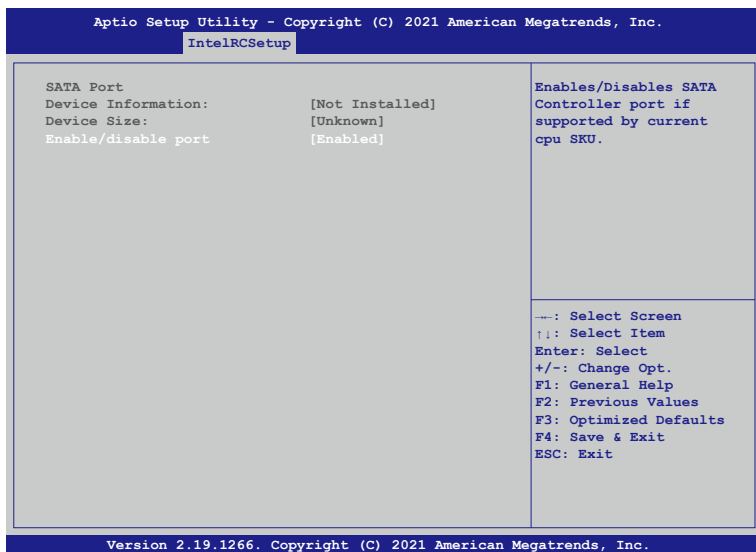


- **SATA Configuration**
Configuration of SATA Controller.



- **SATA Port**
Configuration of SATA Controller port.

3.3.3. IntelRCSetup: SATA Port



- **Enable/disable port**
Enables/Disables SATA Controller port if supported by current cpu SKU.

3.3.4. IntelRCSetup: M.2 SATA Port

Aptio Setup Utility - Copyright (C) 2021 American Megatrends, Inc.	
IntelRCSetup	
M.2 SATA Port Device Information: [Not Installed] Device Size: [Unknown] Enable/disable port [Enabled]	Enables/Disables SATA Controller port if supported by current cpu SKU.
	---: Select Screen ↑↓: Select Item Enter: Select +/-: Change Opt. F1: General Help F2: Previous Values F3: Optimized Defaults F4: Save & Exit ESC: Exit

Version 2.19.1266. Copyright (C) 2021 American Megatrends, Inc.

- **Enable/disable port**
Enables/Disables SATA Controller port if supported by current cpu SKU.

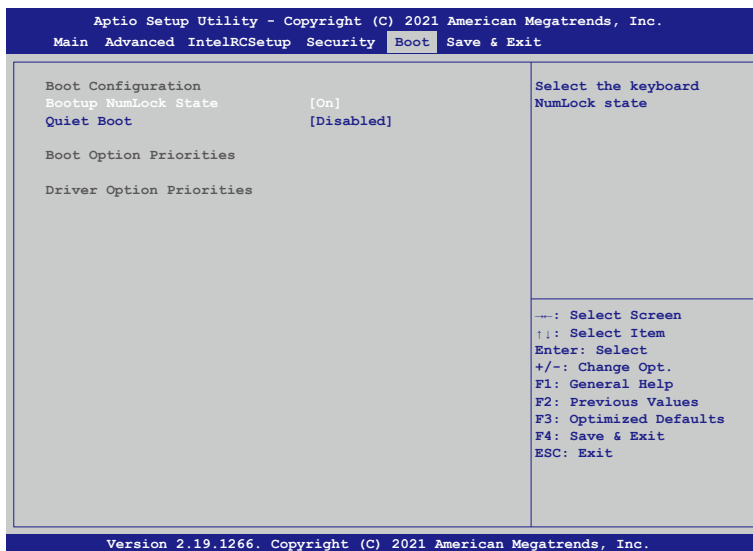
3.4. Security Setup

Aptio Setup Utility - Copyright (C) 2021 American Megatrends, Inc.					
Main Advanced IntelRCSetup Security Boot Save & Exit					
<p>Password Description</p> <p>If ONLY the Administrator's password is set, then this only limits access to Setup and is only asked for when entering Setup. If ONLY the User's password is set, then this is a power on password and must be entered to boot or enter Setup. In Setup the User will have Administrator rights. The password length must be in the following range:</p> <table> <tr> <td>Minimum length</td> <td>3</td> </tr> <tr> <td>Maximum length</td> <td>20</td> </tr> </table> <p>Administrator Password User Passwordword</p>	Minimum length	3	Maximum length	20	<p>Setup Administrator Password</p> <hr/> <p>--: Select Screen !: Select Item Enter: Select +/-: Change Opt. F1: General Help F2: Previous Values F3: Optimized Defaults F4: Save & Exit ESC: Exit</p>
Minimum length	3				
Maximum length	20				

Version 2.19.1266. Copyright (C) 2021 American Megatrends, Inc.

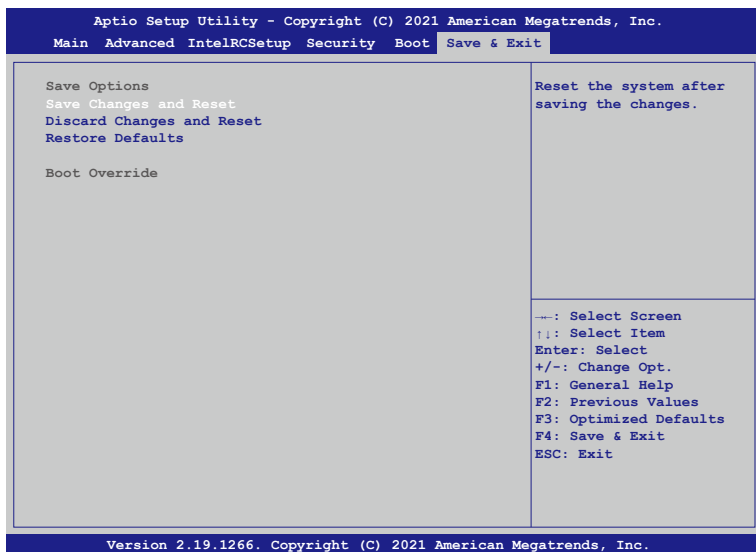
- **Setup Administrator Password**
Press Enter to create a new, or change an existing Administrator password.
- **User Password**
Press Enter to create a new, or change an existing User password.

3.5. Boot Setup



- **Bootup NumLock State**
This feature selects the Power-on state for the Numlock key.
- **Quiet Boot**
Use this feature to select the screen display between POST messages or the OEM logo at bootup. Select Disabled to display the POST messages. Select Enabled to display the OEM logo instead of the normal POST messages.
- **Boot Option Priorities**
This feature allows the user to specify which devices are boot devices and the order of priority from which the systems boots from during startup.

3.6. Save & Exit Setup



- Save Changes and Reset**
 When you have completed the system configuration changes, select this option to save all changes made and reset the system.
- Discard Changes and Exit**
 Select this option to quit the BIOS Setup without making any permanent changes to the system configuration and reboot the computer. Select Discard Changes and Exit from the Exit menu and press <Enter>.
- Restore Optimized Defaults**
 To set this feature, select Restore Optimized Defaults and press <Enter>. These are factory settings designed for maximum system performance but not for maximum stability.
- Boot Override**
 This feature allows the user to override the Boot Option Priorities sequence in the Boot menu and immediately boot the system with another device specified by the user. This is a onetime override.

4. Software Installation and Programming Guide

4.1. Introduction

4.1.1. Environment

This test utility develop is based on kernel 4.8 above (Ubuntu 18.04.1 Server 64bit).

4.1.2. GPIO

The AND-DNV3N1-xCR series provides GPIO interface. Users can use the GPIO APIs to control GPO Pin.

4.1.3. Watchdog

The AND-DNV3N1-xCR series provides a Watchdog Timer. Users can use the Watchdog APIs to configure and to access the Watchdog timer. The Watchdog timer can be set to 1~255 seconds. Setting the timer to zero disables the timer. The remaining seconds of the timer to reboot can be read from the timer.

4.1.4. LAN Bypass Subsystem

Two pairs of LAN ports on AND-DNV3N1-xCR series implements the bypass function. Users can invoke the LAN Bypass APIs to control the bypass states of the LAN ports.

1. Get bypass firmware version.
2. Set bypass wdt.
3. Set bypass wdt action.
4. Get bypass wdt action.
5. Set bypass power on action.
6. Get bypass power on action.
7. Set bypass power off action.
8. Get bypass power off action.
9. Set bypass current action.
10. Get bypass current action.

4.2. File Descriptions

4.2.1. GPIO/Watchdog/LAN Bypass Subsystem Module

1. TestUtility.exe

The GPIO, Watchdog, Lan Bypass Subsystem bin binary.

2. Libw83627.h

This file includes the declarations of the APIs and macro definitions.

3. Libw83627.a

The static library for linux.

4. Libw83627.so

The dynamic library for linux.

5. Install_driver

This file is linux shell script file. Run this file can help you install environment and modprobe driver on linux.

6. readme

Use this utility first. Please read the readme file first.

4.3. API List and Descriptions

4.3.1. GPIO

Syntax:	Get_gpi_status(int pin)
Description:	Get the status of GPIO input pins status.
Parameters:	This function fills in an integer variable as the parameter. The pin0 ~ pin1 is the status of the input pins.
Return Value:	1: HIGH, 0: LOW.

Syntax:	Get_gpo_status(int pin)
Description:	Get the status of GPIO output pins status.
Parameters:	This function fills in an integer variable as the parameter. The pin0 ~ pin1 is the status of the output pins.
Return Value:	1: HIGH, 0: LOW.

Syntax:	Set_gpo(int pin, int value)
Description:	Set the status of GPIO output value.
Parameters:	Set value 0 is Low, 1 is High
Return Value:	If the function sets the values successfully, it returns 0 or -1, any other returned value stands for error.

4.3.2. Watchdog

Syntax:	Void wdt_start(int _timevalue)
Description:	This function gets the watchdog timer register to the timevalue and starts to count down.
Parameters:	The parameter 'val' is the value to set to watchdog timer register. The range is 1 ~ 255.
Return Value:	This function returns the value of the time counter and returns it to the caller as an unsigned integer.

Syntax:	Void wdt_stop(void)
Description:	This function sets the watchdog timer stop.
Parameters:	None.
Return Value:	None.

4.3.3. LAN Bypass Subsystem

Syntax:	int get_bypass_firmware_ver(char *ver)
Description:	This function can get bypass firmware version and data to save in char pointer.
Parameters:	char pointer, this pointer to 16 character array.
Return Value:	0: Successful, -1: fail.

Syntax:	int set_bypass_wdt(int pair, int time)
Description:	This function can set which pair bypass Wdt timer.
Parameters:	pair: 1-4 , time: 1-255(sec), 0:stop.
Return Value:	0: Successful, -1: fail.

Syntax:	int set_bypass_wdt_action(int pair, int action)
Description:	This function can set which pair bypass Wdt time up action.
Parameters:	pair: 1-4 , action: 0:bypass, 1:normal
Return Value:	0: bybpass, 1: normal, -1: fail.
Syntax:	int get_bypass_wdt_action(int pair)
Description:	This function can get which pair bypass Wdt time up action.
Parameters:	pair: 1-4
Return Value:	0: bybpass, 1: normal, -1: fail.
Syntax:	int set_bypass_poweron_action(int pair, int action)
Description:	This function can set which pair bypass power on action.
Parameters:	pair: 1-4, action: 0: bypass, 1: normal.
Return Value:	0: Successful, -1: fail.
Syntax:	int get_bypass_poweron_action(int pair)
Description:	This function can get which pair bypass power on action.
Parameters:	pair: 1-4.
Return Value:	0: bybpass, 1: normal, -1: fail.
Syntax:	int set_bypass_poweroff_action(int pair, int action)
Description:	This function can set which pair bypass power off action.
Parameters:	pair: 1-4, action: 0: bypass, 1: normal.
Return Value:	0: Successful, -1: fail.
Syntax:	int get_bypass_poweroff_action(int pair)
Description:	This function can get which pair bypass power off action.
Parameters:	pair: 1-4.
Return Value:	0: bybpass, 1: normal, -1: fail.

Syntax:	int set_bypass_current_action(int pair, int action)
Description:	This function can set which pair bypass current action.
Parameters:	pair: 1-4, action: 0: bypass, 1: normal.
Return Value:	0: bybpass, -1: fail.

Syntax:	int get_bypass_current_action(int pair)
Description:	This function can get which pair bypass current action.
Parameters:	pair: 1-4.
Return Value:	0: bybpass, 1: normal, -1: fail.

4.3.4. Notes

Syntax:	int libw83627_init(void)
Description:	use the watchdog, gpio function before, must be call this function first.
Parameters:	None.
Return Value:	0: Successful, -1: Fail

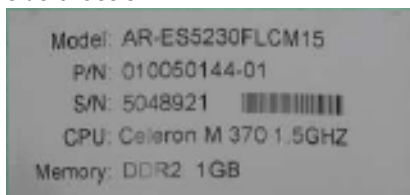
Syntax:	void lib_close(void)
Description:	if watchdog, gpio fuction not use on your program, please call this function.
Parameters:	None.
Return Value:	None.

Note: If you want to control the LAN module bypass on the LAN card purchased from Accrosser, be sure to take "7" Module H as the module reference for programming.

5. FAQ

Q 1. Where is the serial number located on my system?

- The serial number (S/N) is an alpha-numeric character located on the bottom or side chassis.



(for reference only)

Q 2. How to active the second SIM card SIERRA EM7455/EM7430 ?

- Make sure the second SIM card (UIM2) is enabled by check AT!CUSTOM?

UIM2ENABLE	0-1	Disable/Enable UIM2 slot support 0 - Not enabled (default) 1 - Enabled
------------	-----	--

- Make sure SIM hot swap for both SIMs (UIM1 & UIM2).

SIMHOTSWAPDIS	0-3	Configure SIM hotswap feature on UIM1 and/or UIM2 0 - enable UIM1 and UIM2 1 - disable UIM1 while enable UIM2 2 - disable UIM2 while enable UIM1 3 - disable UIM1 and UIM2
---------------	-----	---

Use AT!UIMS to select active SIM between the two SIM cards.

Argument	Range	Description
<uim_slot>	0-1	Selection of active SIM Card: 0 - UICC1: External UIM Interface 1 1 - UICC2: External UIM Interface 2

Q 3. How to active the second SIM card Quectel EM06-A/EM06-E 4G ?

- AT+QDSIM=?**
+QDSIM: (0,1) //List the number of currently supported card slots
OK
- AT+QDSIM?**
+QDSIM: 0 //The current card slot is 1
OK
- AT+QDSIM=1** //Switch to card slot 2
OK

//reboot module

- **AT+QDSIM?**
+QDSIM: 1 //Enable SIM error reports
OK
- The configuration will be automatically saved to NVRAM.
- This function takes effect after restart.

Technical Support Form

We deeply appreciate your purchase of Acrosser products. Please find the “**tech_form.doc**” file in our utility CD. If you have any questions or problems about Acrosser products, please fill in the following information. We will answer your questions in the shortest time possible.

Describe Your Info and Acrosser System Info

- Your Company Name: _____
- Your Contact Info: _____ Phone Number: _____
- Your E-Mail Address: _____
- Your Company Address: _____

- Acrosser Model Name: _____
- Acrosser Serial Number: _____

Describe System Configuration

- CPU Type: _____
- Memory Size: _____
- Storage Device (e.g. HDD, CF, or SSD): _____
- Additional Peripherals (e.g. Graphic Card): _____
- Operating System & Version (e.g. Windows 7 Embedded): _____
- Special API or Driver: _____
(If yes, please provide it for debug.)
- Running Applications: _____
- Others: _____

Describe Your Problems or Questions:

Send the above information to one of the following Acrosser contacts:

- Acrosser Local Sales Representative
- Acrosser Authorized Sales Channels
- Acrosser Inquiry --- <http://www.acrosser.com/inquiry.html>
- Acrosser FAX Number --- 886-2-29992887

To Make Your **Embedded** Idea a Reality



Acrosser Headquarters

241新北市三重區光復路一段61巷26號10樓
10F., No.26, Ln. 61, Sec. 1, Guangfu Rd.,
Sanchong Dist., New Taipei City 241, Taiwan
(R.O.C.)

TEL: +886-2-29999000

FAX: +886-2-29992887 / +886-2-29993960

Acrosser Taichung Office

414台中市烏日區僑仁街8號10樓之1
10F.-1, No.8, Qiaoren St., Wuri Dist.,
Taichung City 414, Taiwan (R.O.C.)

TEL: +886-4-2337-0715

FAX: +886-4-2337-3422

Acrosser China Subsidiary

深圳市欣扬通电子有限公司

深圳市福田区泰然八路安华工业区6号楼7层
706室 (邮编: 518040)

Room 706, floor 7, building 6, Anhua Industrial
Zone, Tairan 8th Road, Futian District, Shenzhen,
China (Postal: 518040)

TEL: +86-755-83542210

FAX: +86-755-83700087

Acrosser Nanjing Office

欣扬通电子有限公司 南京办事处

江苏省南京市江宁区天元东路228号504室
(邮编: 211100)

Room 504, No. 228, Tian Yuan East Rd.,
Jiang Ning Dist., Nanjing City, Jiangsu Province,
China (Postal: 211100)

Mobile: 13611932003

TEL: +86-025-86137002

FAX: +86-025-86137003

Acrosser Beijing Office

欣扬通电子有限公司 北京办事处

北京市昌平区沙河镇沙阳路巩华新村8号楼2单元
1403室 (邮编: 102206)

Room 1403, Unit 2, Building 8, Gonghua Village,
Shahe Town, Changping District, Beijing, China
(Postal: 102206)

Mobile: 13311317329

Acrosser USA Inc.

8351 Elm Ave. Suite 107, Rancho Cucamonga,
CA91730, USA

TEL: +1-909-476-0071

FAX: +1-909-466-9951